

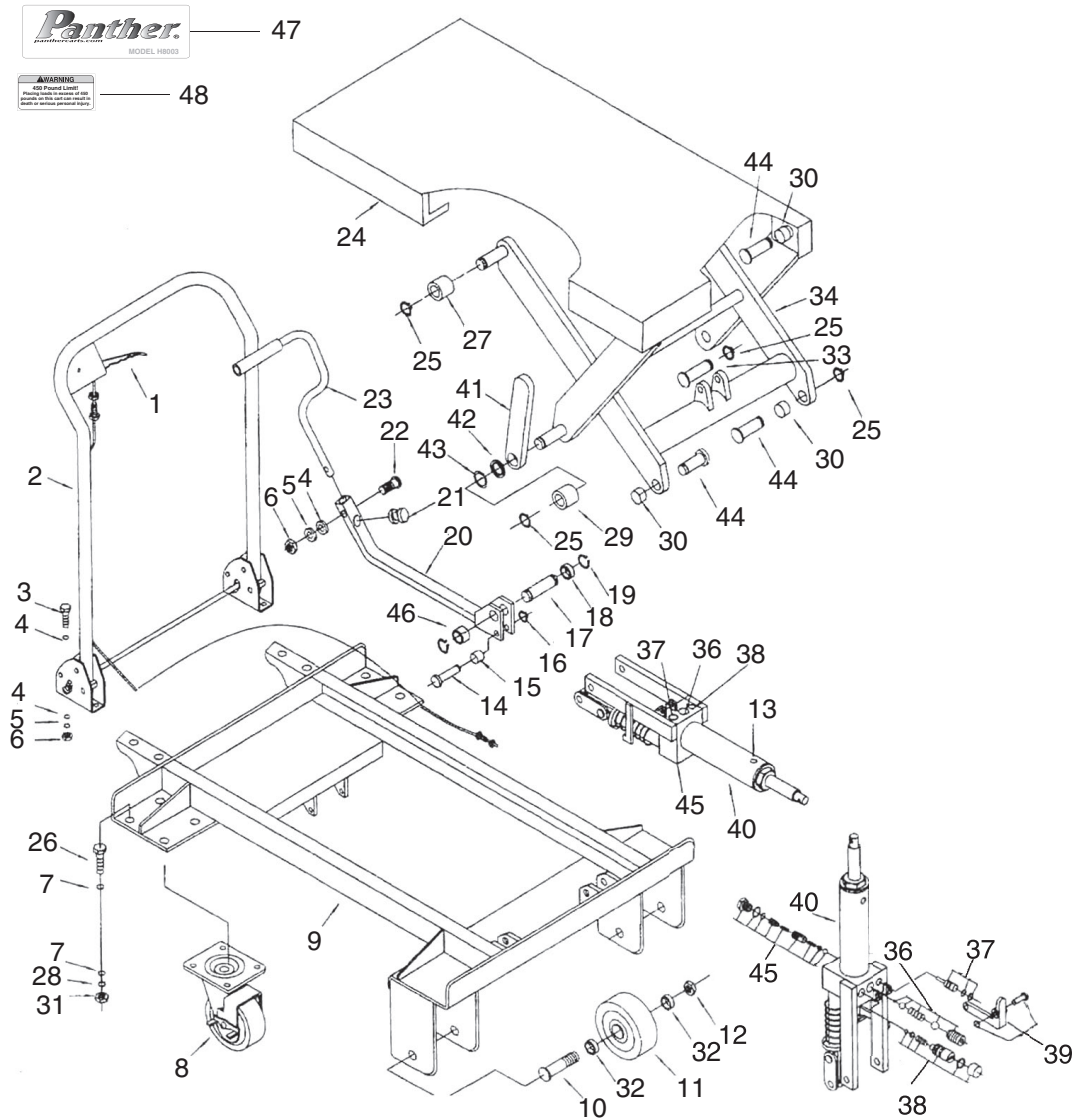
4. Raise the front end of the table and place a wood 2x4 (**Figure 7**) between the table and front wheel to access the hydraulic assembly.
5. Unscrew the fill plug, fill the cylinder with clean hydraulic jack oil to the level of the fill plug hole, and replace the fill plug.
6. Reinstall the table with the hardware removed in **Step 2**.



**Figure 7.** Supporting table with a 2x4.

*If you need help with your new hydraulic lift table, call our Tech Support at: (570) 546-9663.*

## Parts Breakdown



# Parts List

REF	PART #	DESCRIPTION
1	PH8003001	CABLE RELEASE HANDLE
2	PH8003002	HANDLE ASSEMBLY
3	PB07M	HEX BOLT M8-1.25 X 25
4	PW01M	FLAT WASHER 8MM
5	PLW04M	LOCK WASHER 8MM
6	PN03M	HEX NUT M8-1.25
7	PW04M	FLAT WASHER 10MM
8	PH8003008	CASTER WHEEL
9	PH8003009	FRAME
10	PB167M	HEX BOLT M12-1.75 X 85
11	PH8003011	WHEEL
12	PLN09M	LOCK NUT M12-1.75
13	PH8003013	FILL PLUG
14	PH8003014	SHAFT
15	PH8003015	ROLLER
16	PR01M	EXT RETAINING RING 10MM
17	PH8003017	ALIGNMENT PIN
18	PH8003018	BUSHING
19	PR06M	EXT RETAINING RING 16MM
20	PH8003020	PUMP ARM
21	PH8003021	BUMPER
22	PB26M	HEX BOLT M8-1.25 X 30
23	PH8003023	FOOT CONTROL LEVER
24	PH8003024	TABLE

REF	PART #	DESCRIPTION
25	PR03M	EXT RETAINING RING 12MM
26	PB01M	HEX BOLT M10-1.5 X 30
27	PH8003027	ROLLER
28	PLW06M	LOCK WASHER 10MM
29	PH8003029	ROLLER
30	PH8003030	BUSHING
31	PN02M	HEX NUT M10-1.5
32	PH8003032	BUSHING
33	PH8003033	ALIGNMENT PIN
34	PH8003034	SCISSOR ARM ASSEMBLY
36	PH8003036	FLOW VALVE KIT
37	PH8003037	RELEASE VALVE KIT
38	PH8003038	PRESSURE RELIEF VALVE KIT
39	PH8003039	RELEASE LEVER KIT
40	PH8003040	PUMP/CYLINDER UNIT
41	PH8003041	ARM SUPPORT
42	PW14M	FLAT WASHER 15MM
43	PR05M	EXT RETAINING RING 15MM
44	PH8003044	ALIGNMENT PIN
45	PH8003045	SPEED CONTROL VALVE KIT
46	PH8003046	BUSHING
47	PH8003047	MODEL NUMBER LABEL
48	PH8003048	CAPACITY WARNING LABEL