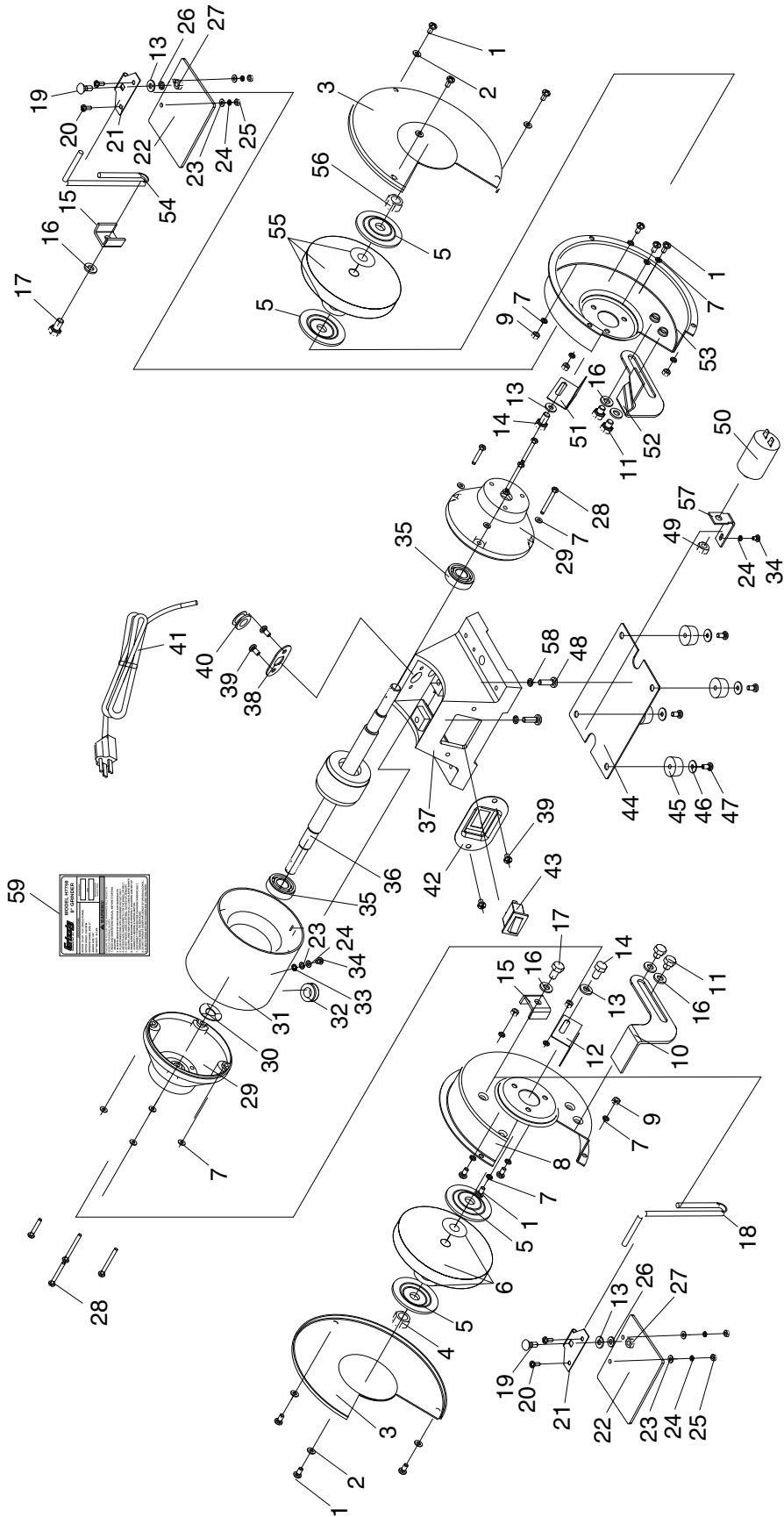


# H7758 Parts Breakdown



# H7758 Parts List

REF	PART #	DESCRIPTION
1	PS09M	PHLP HD SCR M5-.8 X 10
2	PW02M	FLAT WASHER 5MM
3	PH7758003	WHEEL COVER
4	PN21M	HEX NUT M16-2 (LH)
5	PH7758005	WHEEL FLANGE
6	PH7758006	WHEEL TYPE-1 36-GRIT 8" X 1" X 5/8"
7	PLW01M	LOCK WASHER 5MM
8	PH7758008	LEFT SAFE GUARD
9	PN06M	HEX NUT M5-.8
10	PH7758010	LEFT TOOL REST
11	PB17M	HEX BOLT M8-1.25 X 10
12	PH7758012	LEFT SPARK DEFLECTOR
13	PW03M	FLAT WASHER 6MM
14	PB88M	HEX BOLT M6-1 X 6
15	PH7758015	BRACKET
16	PW01M	FLAT WASHER 8MM
17	PB84M	HEX BOLT M8-1.25 X 14
18	PH7758018	LEFT EYESHIELD MOUNTING ROD
19	PCB22M	CARRIAGE BOLT M6-1 X 16
20	PS38M	PHLP HD SCR M4-.7 X 10
21	PH7758021	EYESHIELD PRESSURE PLATE
22	PH7758022	EYESHIELD
23	PW05M	FLAT WASHER 4MM
24	PLW02M	LOCK WASHER 4MM
25	PN04M	HEX NUT M4-.7
26	PLW03M	LOCK WASHER 6MM
27	PN01M	HEX NUT M6-1
28	PS105M	PHLP HD SCR M5-.8 X 60
29	PH7758029	END BELL
30	PH7758030	WAVE LOCK WASHER 40MM

REF	PART #	DESCRIPTION
31	PH7758031	STATOR
32	PH7758032	CORD CLIP
33	PTLW01M	EXT TOOTH WASHER 4MM
34	PS07M	PHLP HD SCR M4-.7 X 8
35	P6203	BALL BEARING 6203
36	PH7758036	ROTOR
37	PH7758037	BASE
38	PH7758038	CORD BUSHING FIXED PLATE
39	PS05M	PHLP HD SCR M5-.8 X 8
40	PH7758040	CORD CLIP FIXED PLATE
41	PH7758041	CORD AND PLUG
42	PH7758042	SWITCH PLATE
43	PH7758043	SWITCH
44	PH7758044	BASE BOTTOM COVER
45	PH7758045	RUBBER FOOT
46	PH7758046	FENDER WASHER 5MM
47	PS40M	PHLP HD SCR M5-.8 X 16
48	PS04M	PHLP HD SCR M8-1.25 X 20
49	PN03M	HEX NUT M8-1.25
50	PH7758050	CAPACITOR 20M 300VAC 2.5"L X 1.5"D
51	PH7758051	RIGHT SPARK DEFLECTOR
52	PH7758052	RIGHT TOOL REST
53	PH7758053	RIGHT SAFE GUARD
54	PH7758054	RIGHT EYESHIELD MOUNTING ROD
55	PH7758055	WHEEL TYPE-1 60-GRIT 8" X 1" X 5/8"
56	PN13M	HEX NUT M16-2
57	PH7758057	CAPACITOR HOLDER
58	PLW04M	LOCK WASHER 8MM
59	PH7758059	MACHINE ID LABEL

## WARNING

Safety labels warn about machine hazards and ways to prevent injury. The owner of this machine **MUST** maintain the original location and readability of the labels on the machine. If any label is removed or becomes unreadable, **REPLACE** that label before using the machine again. Contact Grizzly at (800) 523-4777 or [www.grizzly.com](http://www.grizzly.com) to order new labels.

