

# Grizzly<sup>®</sup>

**Industrial, Inc.**

## 34° FRAMING NAILER KIT

### MODEL H5571

### PARTS LIST



COPYRIGHT © SEPTEMBER, 2003 BY GRIZZLY INDUSTRIAL, INC.

**WARNING: NO PORTION OF THIS MANUAL MAY BE REPRODUCED IN ANY SHAPE OR FORM WITHOUT THE WRITTEN APPROVAL OF GRIZZLY INDUSTRIAL, INC.**

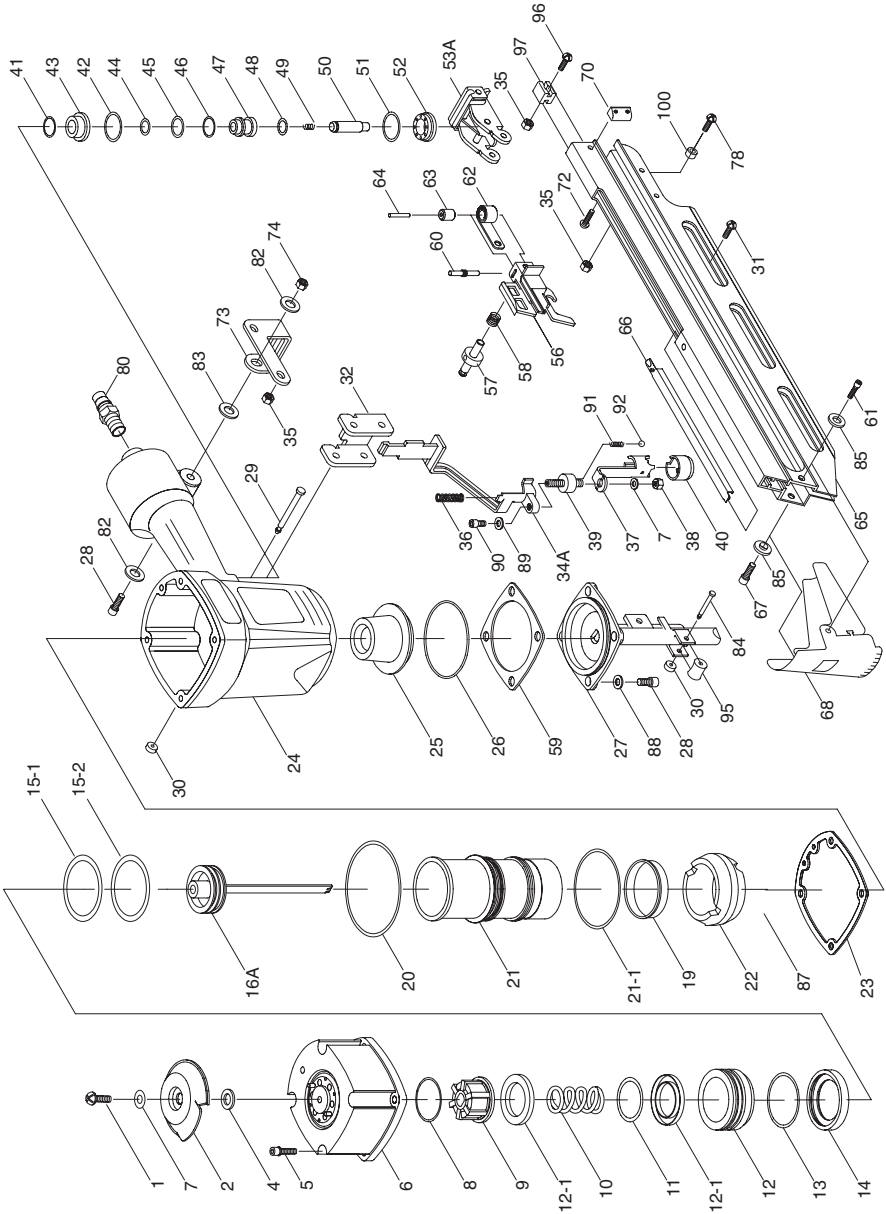
PRINTED IN TAIWAN

#### **ONLINE PARTS LIST DISCLAIMER**

THESE PARTS REPRESENT THE CONFIGURATION OF THE MACHINE AS IT IS CURRENTLY BEING SHIPPED. THE MACHINE CONFIGURATION CAN CHANGE AS PRODUCT IMPROVEMENTS ARE INCORPORATED. IF YOU OWN AN EARLIER VERSION OF THE MACHINE, THIS PARTS LIST MAY NOT EXACTLY DEPICT YOUR MACHINE. CONTACT CUSTOMER SERVICE IF YOU HAVE ANY QUESTIONS ABOUT PART DIFFERENCES.

PREVIOUS PARTS LIST VERSIONS ARE NOT AVAILABLE ONLINE.

# H5571 PART BREAKDOWN



REF	PART #	DESCRIPTION
1	PSB115M	BTN HD CAP SCR M6-1 X 16
2	PH5571002	EXHAUST COVER
4	PH5571004	RUBBER WASHER 10MM
5	PSB06M	CAP SCREW M6-1 X 25
6	PH5571006	CAP
7	PW09M	FLAT WASHER 7MM
8	PH5571008	SPACER
9	PH5571009	PISTON STOPPER
10	PH5571010	SPRING
11	PH5571011	O RING
12	PH5571012	PISTON HEAD VALVE
12-1	PH5571012-1	SPACER
13	PH5571013	O RING
14	PH5571014	SEAL
15-1	PH5571015-1	O RING
15-2	PH5571015-2	O RING
16A	PH5571016A	PISTON ASSEMBLY
19	PH5571019	CYLINDER RING
20	PH5571020	O RING
21	PH5571021	CYLINDER
21-1	PH5571021-1	O RING
22	PH5571022	BUMPER UPPER
23	PH5571023	GASKET
24	PH5571024	BODY
25	PH5571025	BUMPER BOTTOM
26	PH5571026	O RING
27	PH5571027	NOSE
28	PSB31M	CAP SCREW M8-1.25 X 25
29	PH5571029	PIN
30	PH5571030	RUBBER RING
31	PSB116M	BTN HD CAP SCR M5-.8 X 14
32	PH5571032	GUIDE SAFETY LEVER
34A	PH5571034A	SAFETY LEVER ASM.
35	PLN02M	LOCK NUT M5-.8
36	PH5571036	SPRING
37	PH5571037	SAFETY LEVER
38	PLN03M	LOCK NUT M6-1
39	PH5571039	DEPTH ADJUSTING KNOB
40	PH5571040	RUBBER PAD
41	PH5571041	O RING
42	PH5571042	O RING
43	PH5571043	VALVE
44	PH5571044	O RING

REF	PART #	DESCRIPTION
45	PH5571045	O RING
46	PH5571046	O RING
47	PH5571047	VALVE PLUNGER
48	PH5571048	O RING
49	PH5571049	SPRING
50	PH5571050	PLUNGER
51	PH5571051	O RING
52	PH5571052	PLUNGER CAP
53A	PH5571053A	TRIGGER ASSEMBLY
56	PH5571056	PUSHER
57	PH5571057	STOPPER
58	PH5571058	SPRING
59	PH5571059	GASKET
60	PH5571060	SET PIN
61	PSB26M	CAP SCREW M6-1 X 12
62	PH5571062	SPIRAL SPRING
63	PH5571063	ROLLER
64	PH5571064	BALL PIN
65	PH5571065	MAGAZINE
66	PH5571066	NAIL GUIDE LINER
67	PSB26M	CAP SCREW M6-1 X 12
68	PH5571068	DEBRIS SHIELD
70	PH5571070	STOPPER BLOCK
72	PSB117M	BTN HD CAP SCR M5-.8 X 8
73	PH5571073	BRACKET
74	PLN04M	LOCK NUT M8-1.25
78	PSB116M	BTN HD CAP SCR M5-.8 X 14
80	PH5571080	3/8" NPT CONNECTOR
82	PW01M	FLAT WASHER 8MM
83	PH5571083	GASKET WASHER
84	PH5571084	PIN
85	PH5571085	SPACER
87	PH5571087	PISTON GUIDE WASHER
88	PLW04M	LOCK WASHER 8MM
89	PW05M	FLAT WASHER 4MM
90	PSB18M	CAP SCREW M4-.7 X 8
91	PH5571091	SPRING
92	PH5571092	SET BALL
95	PH5571095	IDLE ROLLER
96	PSB118M	BTN HD CAP SCR M5-.8 X 20
97	PH5571097	MAGAZINE BLOCK
100	PH5571100	ROLLER