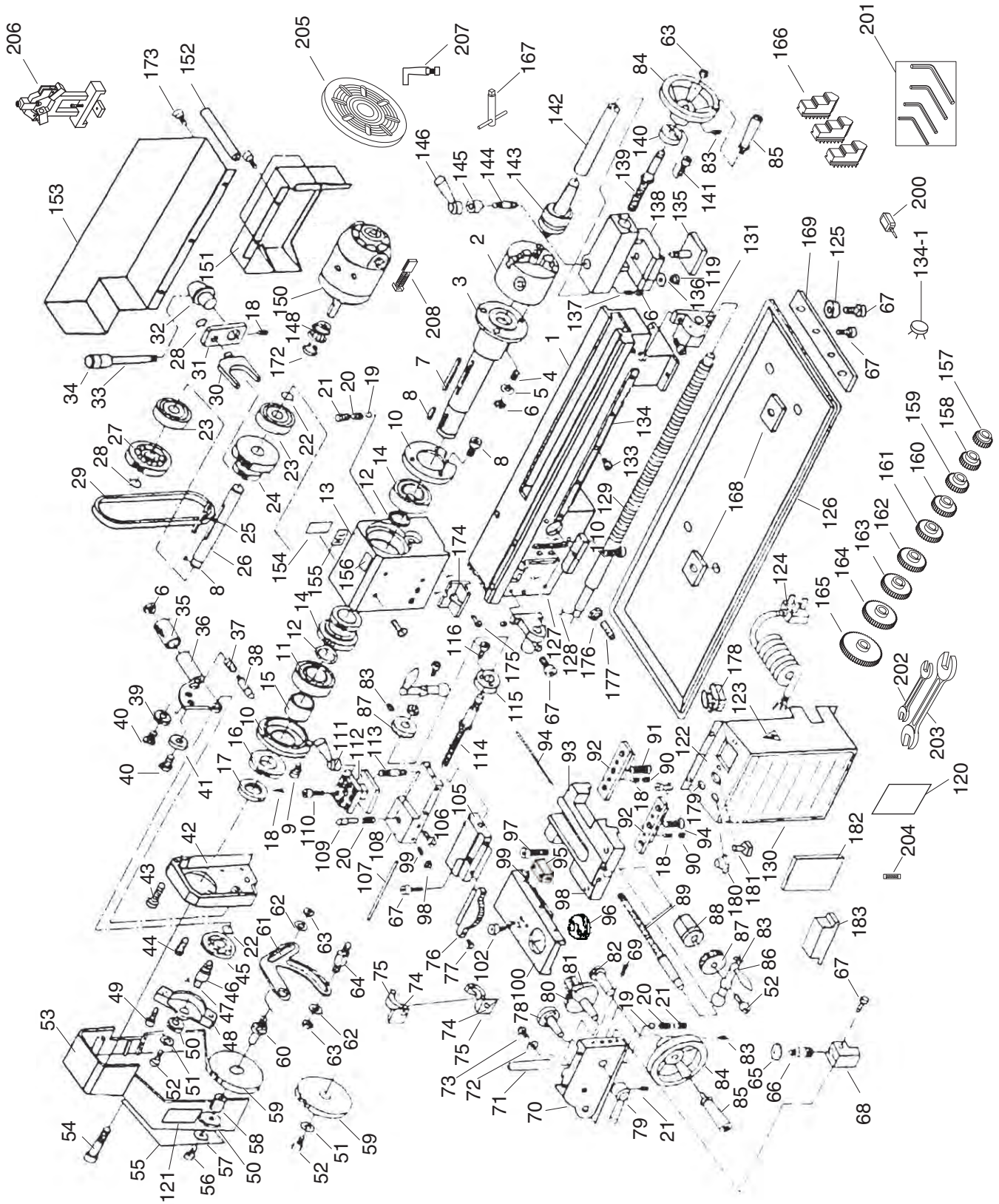


# Parts Breakdown



# Parts List

REF	PART #	DESCRIPTION
1	P8688001	BED WAY
2	P8688002	3 JAW CHUCK
3	P8688003	SPINDLE
4	PSS12M	SET SCREW M6-1 x 25
6	PN06M	HEX NUT M5-.8
7	PK02M	KEY 5 X 5 X 40
8	PK29M	KEY 4 X 4 X 8
9	PSB33M	CAP SCREW M5-.8 X 12
10	P8688010	COVER
11	P6206ZZ	BALL BEARING 6206ZZ
12	P8688012	SPACER
13	P8688013	HEADSTOCK CASTING
14	P8689080	TRANSMISSION GEAR
15	P8688015	SPACER
16	P8688016	SPUR GEAR 45T
17	P8688017	NUT M27 X 1.5
18	PSS31M	SET SCREW M5-.8 X 8
19	P0516604	STEEL BALL 5MM
20	P8688020	COMPRESSION SPRING 4.9 X 9
21	PSS02M	SET SCREW M6-1 X 6
22	PR03M	EXT RETAINING RING 12MM
23	P8688023	BALL BEARING
24	P8688024	H/L GEAR 12T/20T
25	PK71M	KEY 4 X 4 X 45
26	P8688026	H/L GEAR SHAFT
27	P8688027	PULLEY
28	PR01M	EXT RETAINING RING 10MM
29	P8688029	TIMING BELT LX136
30	P8689141	BAR
31	P8688031	SHIFTING ARM
32	P8688032	SHIFTING KNOB
33	P8688033	SHIFTING LEVER
34	P8688034	SHIFTING GRIP
35	P8688035	HANDLE
36	P8688036	HANDLE MOUNT
37	P8688037	COMPRESSION SPRING
38	P8688038	INDICATOR
39	P8688039	PINION 25T
40	P8688040	SUPPORT SCREW
41	P8688041	PINION 20T
42	P8688042	FIXED COVER
43	PSB02M	CAP SCREW M6-1 X 20
44	PSB03M	CAP SCREW M5-.8 X 8
45	P8688045	GEAR 45T
46	P8688046	SHAFT
47	PK03M	KEY 3 X 3 X 8
48	P8688048	MOUNT
49	PSB53M	CAP SCREW M5-.8 X 18
50	P8688050	PINION 20T
51	PW03M	FLAT WASHER 6MM

REF	PART #	DESCRIPTION
52	PSB68M	CAP SCREW M6-1 X 8
53	P8688053	COVER
54	PSB108M	CAP SCREW M5-.8 X 45
55	P8688055	THREADS CUTTING CHART
56	PSB03M	CAP SCREW M5-.8 X 8
57	PW05M	FLAT WASHER 4MM
58	P8688058	BUSHING W/KEY (2PC)
59	P8688059	GEAR 80T
60	P8688060	SHAFT
61	P8688061	SUPPORT PLATE
62	PW01M	FLAT WASHER 8MM
63	PN03M	HEX NUT M8-1.25
64	P8688064	SHAFT
65	P8688065	DIAL
66	P8688066	SHAFT 16T
67	PSB24M	CAP SCREW M5-.8 X 16
68	P8688068	DIAL INDICATOR BODY
69	PSS23M	SET SCREW M4-.7 X 10
70	P8688070	APRON
71	P8688071	GIB STRIP
72	PW05M	FLAT WASHER 4MM
73	PSB18M	CAP SCREW M4-.7 X 8
74	P8688074	SHAFT
75	P8688075	HALF NUT BASE
76	P8688076	ANGLE BLOCK
77	PFH19M	FLAT HD SCR M4-.7 X 10
78	P8688078	GROOVE CAM
79	P8688079	HANDLE
80	P8688080	SHAFT
81	P8688081	FEEDING GEAR (A) 11T/54T
82	P8688082	FEEDING GEAR (B) 24T
83	PSS01M	SET SCREW M6-1 X 10
84	P8688084	WHEEL
85	P8688085	HANDWHEEL HANDLE
86	P8688086	HANDLE, LARGE
87	P8688087	DIAL
88	P8688088	BRACKET
89	P8688089	FEED SCREW
90	PN06M	HEX NUT M5-.8
91	PSB26M	CAP SCREW M6-1 X 12
92	P8688092	SLIDE PLATE
93	P8688093	SADDLE
94	P8688094	GIB STRIP
95	P8688095	FEEDING NUT
96	P8688096	SWIVEL DISK
97	PSB14M	CAP SCREW M8-1.25 X 20
98	PN04M	HEX NUT M4-.7
99	PSS35M	SET SCREW M4-.7 X 16
100	P8688100	CROSS SLIDE



# Parts List

REF	PART #	DESCRIPTION
102	PSB50M	CAP SCREW M5-.8 X 10
105	P8688105	COMPOUND REST
106	PSS35M	SET SCREW M4-.7 X 14
107	P8688107	GIB STRIP
108	P8688108	COMPOUND REST
109	P8688109	POSITIONING PIN
110	PSB06M	CAP SCREW M6-1 X 25
111	P8688111	CLAMPING LEVER
112	P8688112	TOOL REST
113	P8688113	STUD M10-1.5 X 65
114	P8688114	CROSS FEEDING SCREW
115	P8688115	BRACKET
116	PSB23M	CAP SCREW M4-.7 X 12
119	P8688119	SPECIAL NUT M18
120	P8688120	MACHINE ID LABEL
121	P8688121	THREAD DIAL CHART
122	P8688122	SWITCH LABEL
123	P8688123	CONTROL BOX
124	P8688124	PLUG W/CORD
125	P8688125	RUBBER FOOT
126	P8688126	CHIP TRAY
127	P8688127	BRACKET
128	PK52M	KEY 3 X 3 X 15
129	P8688129	LEAD SCREW
130	P8688130	INDICATOR TABLE LABEL
131	P8688131	BRACKET
133	PSB56M	CAP SCREW M3-.5 X 10
134	P8688134	RACK
134-1	P8688134-1	POTENTIOMETER
135	P8688135	CLAMP PLATE
136	PW04M	FLAT WASHER 10MM
137	PSS34M	SET SCREW M5-.8 X 16
138	P8688138	TAILSTOCK CASTING
139	P8688139	TAILSTOCK SCREW
140	P8688140	BRACKET
141	PSB17M	CAP SCREW M4-.7 X 10
142	P8688142	TAILSTOCK QUILT
143	P8688143	CENTER
144	P8688144	STUD M8-1.25 X 40
145	P8688145	CLAMP
146	P8688146	HANDLE
148	P8688148	PULLEY
150	P8688150	MOTOR

REF	PART #	DESCRIPTION
151	P8688151	COVER
152	P8688152	RUBBER PIPE
153	P8688153	REAR SPLASH GUARD
154	P8688154	F/N/R LABEL
155	P8688155	H/L LABEL
156	P8688156	WARNING LABEL
157	P8688157	GEAR 30T
158	P8688158	GEAR 35T
159	P8688159	GEAR 40T
160	P8688160	GEAR 45T
161	P8688161	GEAR 50T
162	P8688162	GEAR 55T
163	P8688163	GEAR 57T
164	P8688164	GEAR 60T
165	P8688165	GEAR 65T
166	P8688166	EXTERNAL JAWS (SET)
167	P8688167	3 JAW CHUCK KEY
168	P8688168	RUBBER PAD
169	P8688169	BRACING
170	P8688170	FLAT HD SCR M3-.5 X 5
171	P8688171	CLAMP BLOCK
172	PR36M	EXT RETAINING RING 7MM
173	PS09M	PHLP HD SCR M5-.8 X 10
174	P8688174	PROTECTOR
175	PSB50M	CAP SCREW M5-.8 X 10
176	PN01M	HEX NUT M6-1
177	PSB06M	CAP SCREW M6-1 X 25
178	P05161137	E-STOP SWITCH
179	P8689136	FUSE BOX
180	P8689134	SPEED CONTROL KNOB
181	P8688181	F/O/R SWITCH
182V2	P8688182V2	PC BOARD 3 TERMINALS V2.09.08
183	P8688183	ELECTRIC FILTER
200	P8688200	OIL CAN
201	P8688201	HEX WRENCH SET
202	PWR810	WRENCH 8 X 10
203	PWR1417	WRENCH 14 X 17
204V2	P8688204V2	FUSE 4A V2.06.07
205	P8688205	FACE PLATE
206	P8688206	STEADY REST
207	P8688207	LATHE DOG
208	P8688208	MOTOR BRUSH

## WARNING

Safety labels warn about machine hazards and ways to prevent injury. The owner of this machine **MUST** maintain the original location and readability of the labels on the machine. If any label is removed or becomes unreadable, **REPLACE** that label before using the machine again. Contact Grizzly at (800) 523-4777 or [www.grizzly.com](http://www.grizzly.com) to order new labels.

