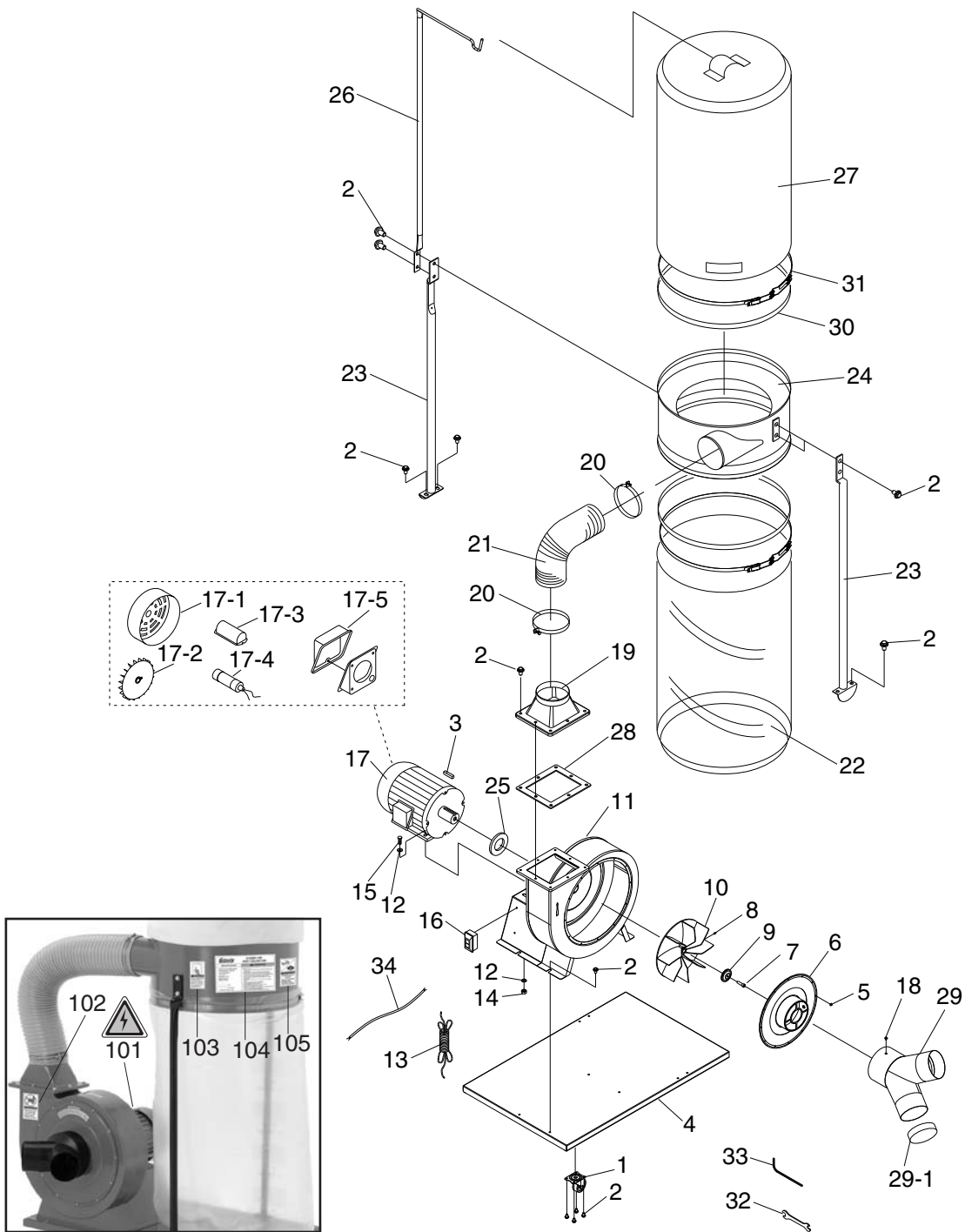


# G1028Z2/G1029Z2 Parts Breakdown



## ⚠️ WARNING

Safety labels warn about machine hazards and ways to prevent injury. The owner of this machine **MUST** maintain the original location and readability of the labels on the machine. If any label is removed or becomes unreadable, **REPLACE** that label before using the machine again. Contact Grizzly at (800) 523-4777 or [www.grizzly.com](http://www.grizzly.com) to order new labels.



# G1028Z2 Parts List

REF	PART #	DESCRIPTION
1	P1028Z2001	CASTER
2	PFB01	FLANGE BOLT 5/16-18 X 1/2
3	PK32M	KEY 6 X 6 X 28
4	P1028Z2004	BASE PLATE
5	PS06	PHLP HD SCR 10-24 X 3/8
6	P1028Z2006	INLET COVER 6"
7	PSB121M	CAP SCREW M6-1 X 20 (LH)
8	PSS15	SET SCREW 3/8-16 X 3/8
9	P1028Z2009	SPECIAL WASHER
10	P1028Z2010	IMPELLER 12-3/4" BLADE 3-1/2"
11	P1028Z2011	COLLECTOR BODY
12	PW07	FLAT WASHER 5/16
13	PWRCRD220L	POWER CORD
14	PN02	HEX NUT 5/16-18
15	PB03	HEX BOLT 5/16-18 X 1
16	P1028Z2016	PUSH BUTTON SWITCH
17	P1028Z017	MOTOR 1-1/2HP 110/220V 1PH
17-1	P1028Z017-1	MOTOR FAN COVER
17-2	P1028Z017-2	MOTOR FAN
17-3	P1028Z017-3	CAPACITOR COVER
17-4	PC300G	S CAPACITOR 300M 125V 1-3/4 X 3-3/8
17-5	P1028Z017-5	JUNCTION BOX
18	PFS03	FLANGE SCREW 10-24 X 3/8

REF	PART #	DESCRIPTION
19	P1028Z2019	OUTLET
20	P1028Z2020	HOSE CLAMP 5"
21	P1028Z2021	HOSE 5"
22	T20543	LOWER PLASTIC BAG
23	P1028Z2023	COLLECTOR SUPPORT
24	P1028Z2024	COLLECTOR
25	P1028Z2025	PACKING
26	P1028Z2026	UPPER BAG SUPPORT
27	G5556	2.5 MICRON FILTER BAG
28	P1028Z2028	GASKET
29	P1028Z2029	6" X 4" X 4" Y-INLET
29-1	P1028Z2029-1	INLET CAP 4"
30	P1028Z2030	FOAM STRIP 4 X 20MM
31	P1028Z2031	BELT CLAMP
32	PWR1012	WRENCH 10/12MM
33	P1028Z2033	SPECIAL HEX WRENCH 5MM
34	PWRCRD220S	MOTOR CORD
101	PLABEL-14	ELECTRICITY LABEL
102	PLABEL-59	HANDS/OUTLET LABEL
103	PLABEL-12A	READ MANUAL LABEL
104	P1028Z2104	MACHINE ID LABEL
105	PLABEL-57	EYE/LUNG LABEL

# G1029Z2 Parts List

REF	PART #	DESCRIPTION
1	P1028Z2001	CASTER
2	PFB01	FLANGE BOLT 5/16-18 X 1/2
3	PK28M	KEY 7 X 7 X 29
4	P1028Z2004	BASE PLATE
5	PS06	PHLP HD SCR 10-24 X 3/8
6	P1028Z2006	INLET COVER 6"
7	PSB121M	CAP SCREW M6-1 X 20 (LH)
8	PSS15	SET SCREW 3/8-16 X 3/8
9	P1028Z2009	SPECIAL WASHER
10	P1029Z2010	IMPELLER 12-3/4" BLADE 3-15/16"
11	P1028Z2011	COLLECTOR BODY
12	PW07	FLAT WASHER 5/16
13	PWRCRD220L	POWER CORD
14	PN02	HEX NUT 5/16-18
15	PB03	HEX BOLT 5/16-18 X 1
16	PSW04	PUSH BUTTON SWITCH
17	P1029Z2017	MOTOR 2 HP 220V 1PH
17-1	P1028Z2017-1	MOTOR FAN COVER
17-2	P1028Z2017-2	MOTOR FAN
17-3	P1028Z2017-3	CAPACITOR COVER
17-4	P1028Z2017-4	CAPACITOR 300M 125V 1-3/4 X 3-3/8
17-5	P1028Z2017-5	JUNCTION BOX
18	PFS03	FLANGE SCREW 10-24 X 3/8

REF	PART #	DESCRIPTION
19	P1028Z2019	OUTLET
20	P1028Z2020	HOSE CLAMP 5"
21	P1028Z2021	HOSE 5"
22	T20543	LOWER PLASTIC BAG
23	P1028Z2023	COLLECTOR SUPPORT
24	P1028Z2024	COLLECTOR
25	P1028Z2025	PACKING
26	P1028Z2026	UPPER BAG SUPPORT
27	G5556	2.5 MICRON FILTER BAG
28	P1028Z2028	GASKET
29	P1029Z2029B	6" X 4" X4" Y-INLET
29-1	P1029Z2029A	INLET CAP 4"
30	P1028Z2030	FOAM STRIP 4 X 20MM
31	P1028Z2031	BELT CLAMP
32	PWR1012	WRENCH 10/12MM
33	P1028Z2033	SPECIAL HEX WRENCH 5MM
34	PWRCRD220S	MOTOR CORD
101	PLABEL-14	ELECTRICITY LABEL
102	PLABEL-59	HANDS/OUTLET LABEL
103	PLABEL-12A	READ MANUAL LABEL
104	P1029Z2104	MACHINE ID LABEL
105	PLABEL-57	EYE/LUNG LABEL

