

SECTION 10: PARTS

Table Saw Body Breakdown

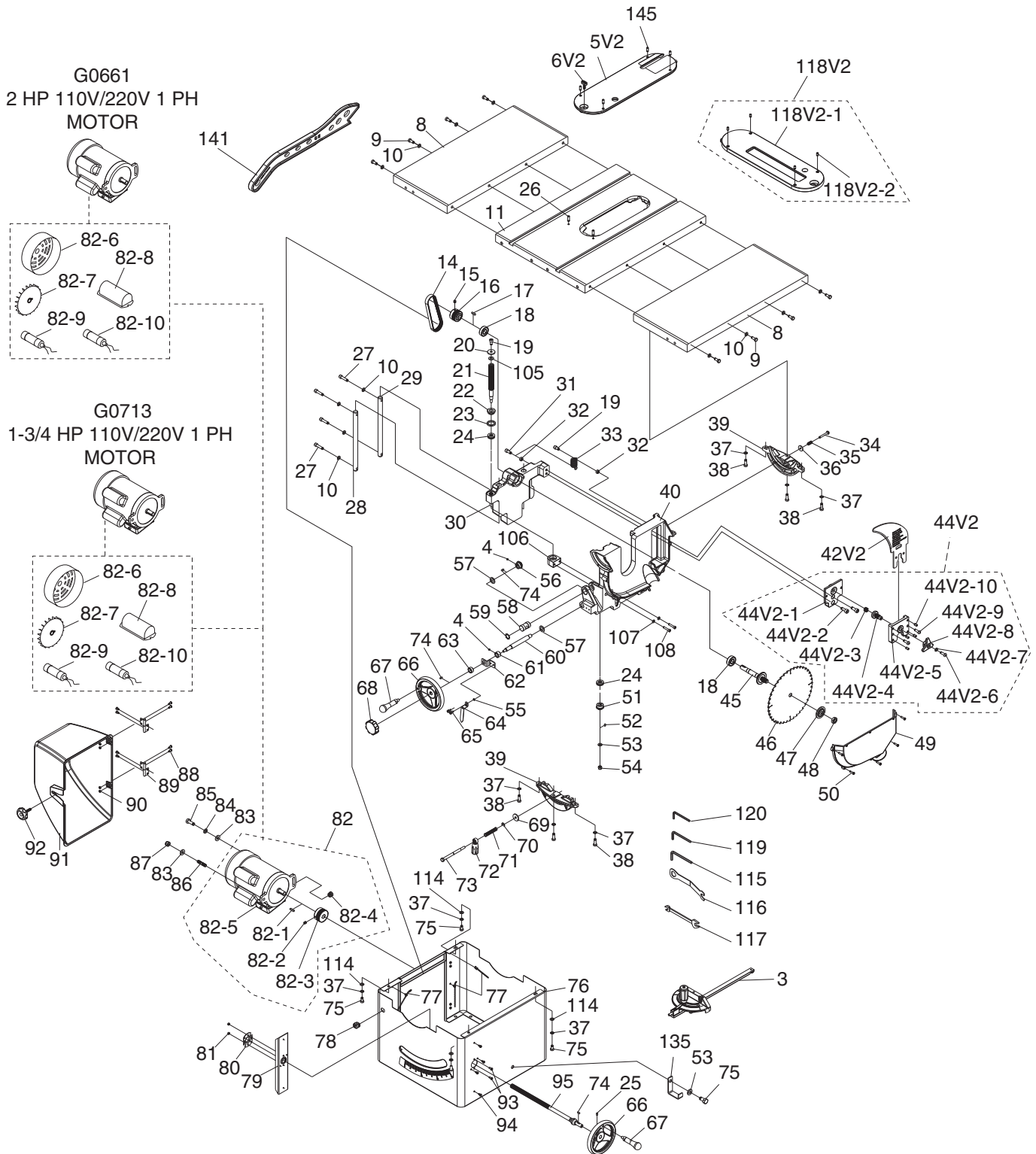


Table Saw Body Parts List

| REF | PART # | DESCRIPTION |
|---------|--------------|------------------------------|
| 3 | P0661003 | MITER GAUGE ASSEMBLY |
| 4 | PSS07M | SET SCREW M5-.8 X 5 |
| 5V2 | P0661005V2 | TABLE INSERT V2.01.10 |
| 6V2 | P0661006V2 | LOCK KNOB M5-.8 V2.01.10 |
| 8 | P0661008 | EXTENSION TABLE |
| 9 | PB09M | HEX BOLT M8-1.25 X 20 |
| 10 | PLW04M | LOCK WASHER 8MM |
| 11 | P0661011 | TABLE |
| 14 | P0661014 | RIBBED BELT 170 J6 |
| 15 | PSS20M | SET SCREW M8-1.25 X 8 |
| 16 | P0661016 | SPINDLE PULLEY |
| 17 | PK34M | KEY 5 X 5 X 20 |
| 18 | P6203-2RS | BALL BEARING 6203 2RS |
| 19 | PCAP11M | CAP SCREW M8-1.25 X 16 |
| 20 | P0661020 | LEADSCREW WASHER 8MM |
| 21 | P0661021 | ELEVATION LEADSCREW |
| 22 | P0661022 | BUSHING |
| 23 | P0661023 | GASKET |
| 24 | P51102 | THRUST BEARING 51102 |
| 25 | PSS31M | SET SCREW M5-.8 X 8 |
| 26 | PSS09M | SET SCREW M8-1.25 X 20 |
| 27 | PCAP40M | CAP SCREW M8-1.25 X 35 |
| 28 | P0661028 | FRONT COLUMN |
| 29 | P0661029 | REAR COLUMN |
| 30 | P0661030 | BRACKET |
| 31 | PCAP14M | CAP SCREW M8-1.25 X 20 |
| 32 | PN03M | HEX NUT M8-1.25 |
| 33 | P0661033 | EXTENSION SPRING |
| 34 | PFB28M | FLANGE BOLT M6-1 X 40 |
| 35 | P0661035 | COMPRESSION SPRING |
| 36 | PW03M | FLAT WASHER 6MM |
| 37 | PTLW07M | EXT TOOTH WASHER 8MM |
| 38 | PB07M | HEX BOLT M8-1.25 X 25 |
| 39 | P0661039 | TRUNNION BRACKET |
| 40 | P0661040 | TRUNNION |
| 42V2 | P0661042V2 | RIVING KNIFE V2.01.10 |
| 44V2 | P0661044V2 | BRACKET V2.01.10 |
| 44V2-1 | P0661044V2-1 | MOUNTING BASE V2.01.10 |
| 44V2-2 | PCAP14M | CAP SCREW M8-1.25 X 20 |
| 44V2-3 | P0661044V2-3 | COMPRESSION SPRING V2.01.10 |
| 44V2-4 | P0661044V2-4 | LOCKING BOLT V2.01.10 |
| 44V2-5 | P0661044V2-5 | MOUNTING PLATE V2.01.10 |
| 44V2-6 | PBHS06M | BUTTON HD CAP SCR M5-.8 X 12 |
| 44V2-7 | PLW01M | LOCK WASHER 5MM |
| 44V2-8 | P0661044V2-8 | HANDLE V2.01.10 |
| 44V2-9 | PBHS16M | BUTTON HD CAP SCR M5-.8 X 16 |
| 44V2-10 | PSS31M | SET SCREW M5-.8 X 8 |
| 45 | P0661045 | SPINDLE |
| 46 | P0661046 | BLADE 10" X 40T |
| 47 | P0661047 | BLADE MOUNTING FLANGE |
| 48 | P0661048 | ARBOR NUT 5/8"-12 |
| 49 | P0661049 | BLADE COVER |
| 50 | PS75M | PHLP HD SCR M5-.8 X 35 |

| REF | PART # | DESCRIPTION |
|-------|------------|-------------------------------|
| 51 | P0661051 | LEFT BEVEL GEAR |
| 52 | PK05M | KEY 4 X 4 X 10 |
| 53 | PW01M | FLAT WASHER 8MM |
| 54 | PLN04M | LOCK NUT M8-1.25 |
| 55 | PTLW02M | EXT TOOTH WASHER 5MM |
| 56 | P0661056 | RIGHT BEVEL GEAR |
| 57 | PW08M | FLAT WASHER 16MM |
| 58 | P0661058 | SHAFT |
| 59 | P0661059 | COUNTERSUNK EXT WASHER |
| 60 | P0661060 | SHAFT |
| 61 | P0661061 | COLLAR |
| 62 | P0661062 | SUPPORT PLATE |
| 63 | P0661063 | COLLAR |
| 64 | P0661064 | POINTER |
| 65 | PFS07M | FLANGE SCREW M5-.8 X 10 |
| 66 | P0661066 | HANDWHEEL |
| 67 | P0661067 | HANDLE 3/8-16 |
| 68 | P0661068 | LOCKING KNOB 5/16-18 |
| 69 | PW01M | FLAT WASHER 8MM |
| 70 | PEC015M | E-CLIP 8MM |
| 71 | P0661071 | COMPRESSION SPRING |
| 72 | P0661072 | HANDLE W/BUSHING |
| 73 | P0661073 | SHAFT |
| 74 | PK69M | KEY 4 X 4 X 12 |
| 75 | PB03M | HEX BOLT M8-1.25 X 16 |
| 76 | P0661076 | CABINET |
| 77 | P0661077 | REUSABLE BEADED CABLE TIE |
| 78 | P0661078 | STRAIN RELIEF SB8R-3 |
| 79 | P0661079 | PLATE |
| 80 | P0661080 | BRACKET |
| 81 | PLN02M | LOCK NUT M5-.8 |
| 83 | PW04M | FLAT WASHER 10MM |
| 84 | PLW06M | LOCK WASHER 10MM |
| 85 | PB01M | HEX BOLT M10-1.5 X 30 |
| 86 | P0661086 | SHAFT |
| 87 | PLN05M | LOCK NUT M10-1.5 |
| 88 | PS09M | PHLP HD SCR M5-.8 X 10 |
| 89 | P0661089 | HINGE |
| 90 | PN06M | HEX NUT M5-.8 |
| 91 | P0661091 | COVER |
| 92 | P0661092 | KNOB BOLT M8-1.25 X 30 |
| 93 | PS08M | PHLP HD SCR M5-.8 X 12 |
| 94 | PHTEK37M | TAP SCREW M5 X 12 |
| 95 | P0661095 | TILT LEADSCREW |
| 105 | PW01M | FLAT WASHER 8MM |
| 106 | P0661106 | LEADSCREW NUT |
| 107 | PLW03M | LOCK WASHER 6MM |
| 108 | PCAP07M | CAP SCREW M6-1 X 30 |
| 114 | PW01M | FLAT WASHER 8MM |
| 115 | PAW06M | HEX WRENCH 6MM |
| 116 | P0661116 | ARBOR WRENCH |
| 117 | PWR1113 | WRENCH 11/13 |
| 118V2 | P0661118V2 | DADO TBL INSERT ASSY V2.01.10 |



Table Saw Body Parts List Continued

| REF | PART # | DESCRIPTION |
|---------|--------------|----------------------------|
| 118-1V2 | P0661118-1V2 | DADO TABLE INSERT V2.01.10 |
| 118-2V2 | PSS53M | SET SCREW M5-.8 X 12 |
| 119 | PAW05M | HEX WRENCH 5MM |
| 120 | PAW02.5M | HEX WRENCH 2.5MM |

| REF | PART # | DESCRIPTION |
|-----|----------|----------------------|
| 135 | P0661135 | PUSH STICK HOLDER |
| 141 | P0661141 | PUSH STICK |
| 145 | PSS53M | SET SCREW M5-.8 X 12 |

G0661 2HP MOTOR

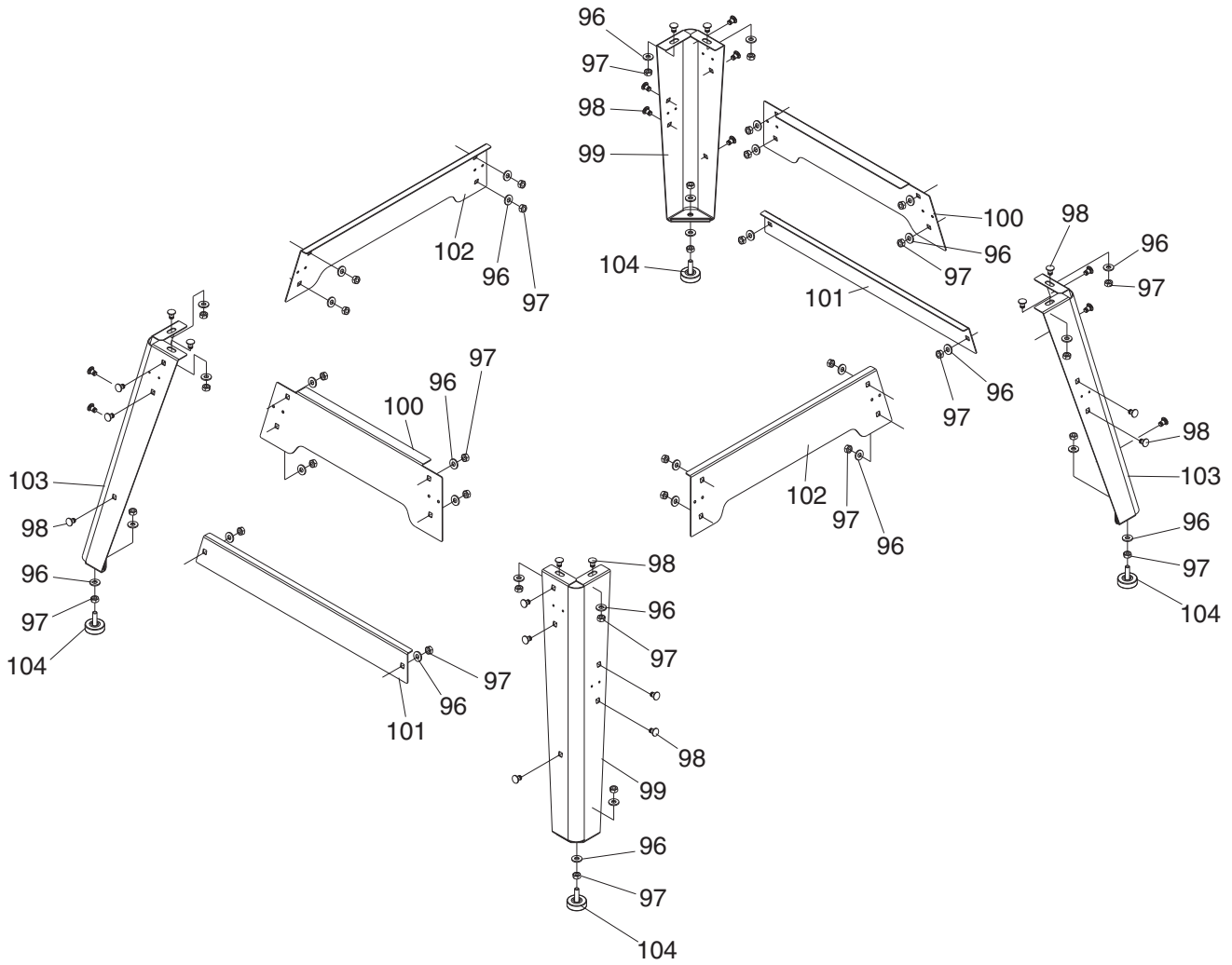
| REF | PART # | DESCRIPTION |
|-------|-------------|-------------------------------|
| 82 | P0661082 | MOTOR 2HP 110/220V 1-PH |
| 82-1 | PK34M | KEY 5 X 5 X 20 |
| 82-2 | PSS20M | SET SCREW M8-1.25 X 8 |
| 82-3 | P0661082-3 | MOTOR PULLEY |
| 82-4 | P0661082-4 | STRAIN RELIEF |
| 82-5 | P0661082-5 | JUNCTION BOX |
| 82-6 | P0661082-6 | MOTOR FAN COVER |
| 82-7 | P0661082-7 | MOTOR FAN |
| 82-8 | P0661082-8 | CAPACITOR COVER |
| 82-9 | P0661082-9 | S CAP 200M 250V 1-1/2 X 2-3/4 |
| 82-10 | P0661082-10 | R CAP 30M 350V 1-1/2 X 2-3/4 |

G0713 1-3/4 HP MOTOR

| REF | PART # | DESCRIPTION |
|-------|-------------|-------------------------------|
| 82 | P0713082 | MOTOR 1-3/4 HP 110/220V 1-PH |
| 82-1 | PK34M | KEY 5 X 5 X 20 |
| 82-2 | PSS20M | SET SCREW M8-1.25 X 8 |
| 82-3 | P0661082-3 | MOTOR PULLEY |
| 82-4 | P0661082-4 | STRAIN RELIEF |
| 82-5 | P0661082-5 | JUNCTION BOX |
| 82-6 | P0661082-6 | MOTOR FAN COVER |
| 82-7 | P0661082-7 | MOTOR FAN |
| 82-8 | P0661082-8 | CAPACITOR COVER |
| 82-9 | P0661082-9 | S CAP 200M 250V 1-1/2 X 2-3/4 |
| 82-10 | P0661082-10 | R CAP 30M 350V 1-1/2 X 2-3/4 |



Stand Parts Breakdown

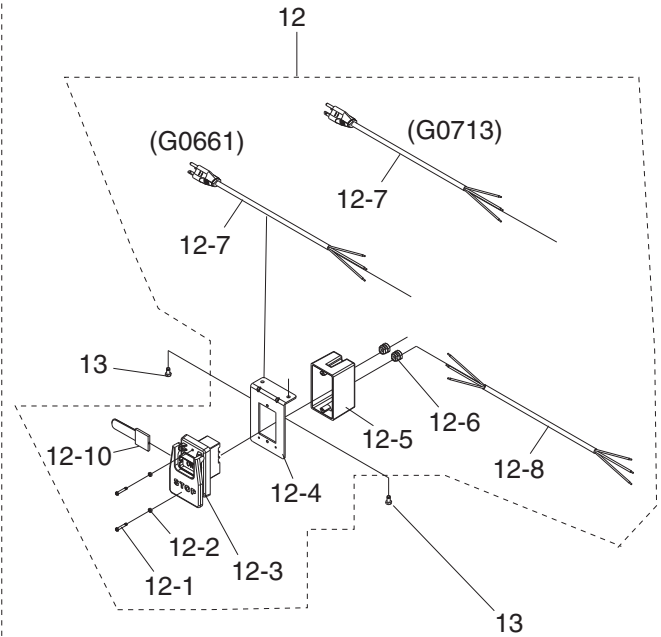
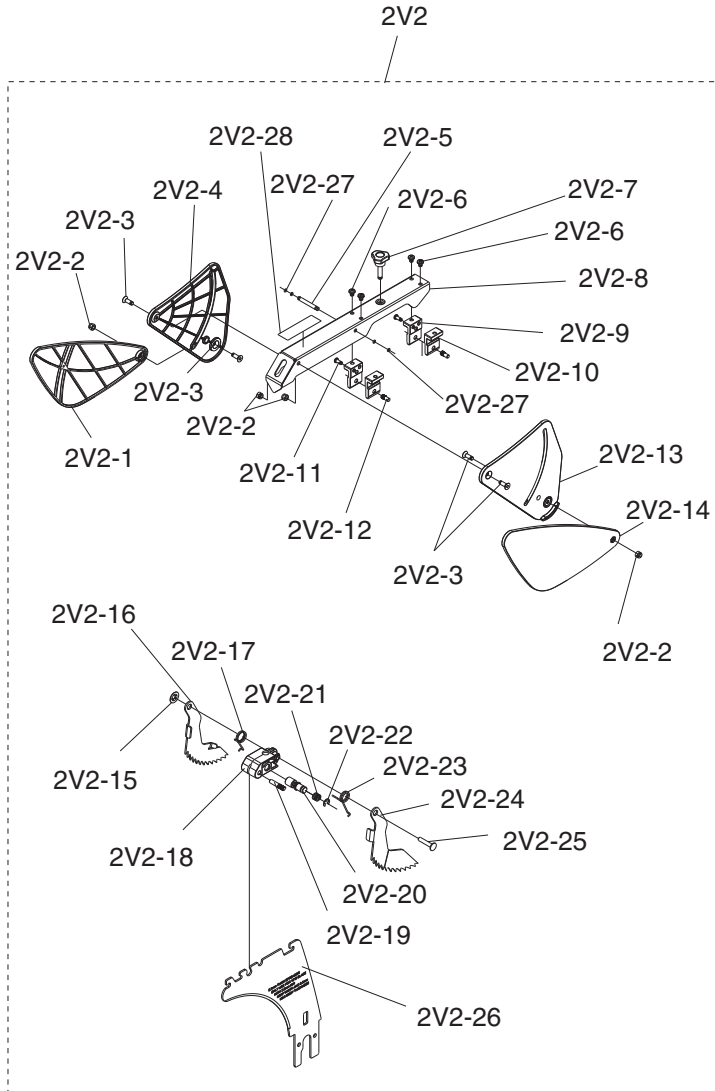


| REF | PART # | DESCRIPTION |
|-----|----------|----------------------------|
| 96 | PW01M | FLAT WASHER 8MM |
| 97 | PN03M | HEX NUT M8-1.25 |
| 98 | PCB11M | CARRIAGE BOLT M8-1.25 X 12 |
| 99 | P0661099 | RIGHT STAND LEG |
| 100 | P0661100 | UPPER STAND BRACE |

| REF | PART # | DESCRIPTION |
|-----|----------|-------------------|
| 101 | P0661101 | LOWER STAND BRACE |
| 102 | P0661102 | SIDE STAND BRACE |
| 103 | P0661103 | LEFT STAND LEG |
| 104 | P0661104 | FOOT |



Guard & Switch Breakdown

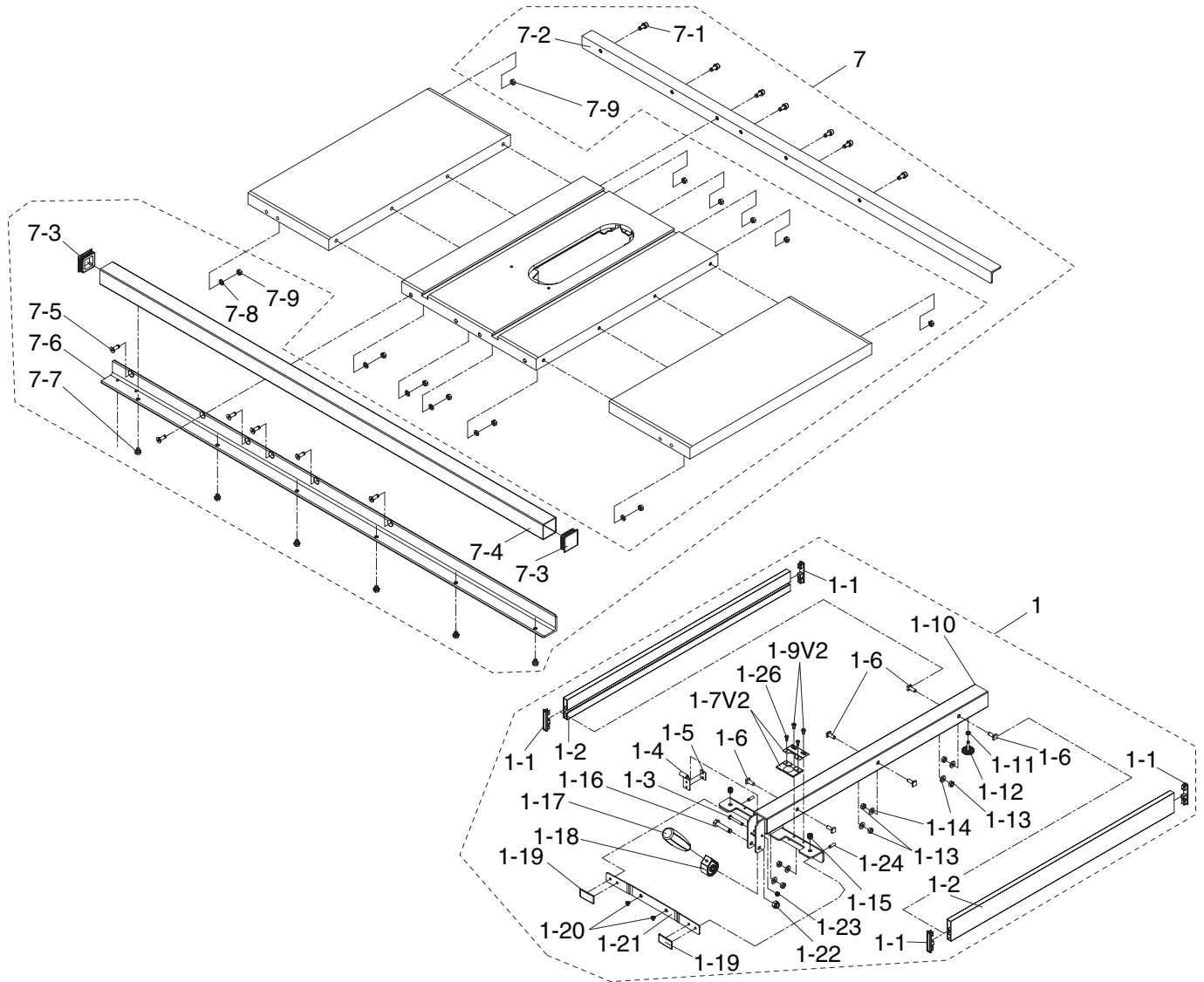


| REF | PART # | DESCRIPTION |
|--------|---------------|------------------------------|
| 2V2 | P0661002V2 | BLADE GUARD ASSY V2.01.10 |
| 2V2-1 | P0661002V2-1 | LEFT PLATE V2.01.10 |
| 2V2-2 | PLN02M | LOCK NUT M5-.8 |
| 2V2-3 | PFH01M | FLAT HD SCR M5-.8 X 15 |
| 2V2-4 | P0661002V2-4 | LEFT COVER V2.01.10 |
| 2V2-5 | P0661002V2-5 | ROD CENTER PIN V2.01.10 |
| 2V2-6 | PS19M | PHLP HD SCR M5-.8 X 6 |
| 2V2-7 | P0661002V2-7 | KNOB BOLT V2.01.10 |
| 2V2-8 | P0661002V2-8 | ROD V2.01.10 |
| 2V2-9 | P0661002V2-9 | LEFT BRACKET V2.01.10 |
| 2V2-10 | P0661002V2-10 | RIGHT BRACKET V2.01.10 |
| 2V2-11 | PBHS24M | BUTTON HD CAP SCR M4-.7 X 10 |
| 2V2-12 | P0661002V2-12 | MOUNTING PIN V2.01.10 |
| 2V2-13 | P0661002V2-13 | RIGHT COVER V2.01.10 |
| 2V2-14 | P0661002V2-14 | RIGHT PLATE V2.01.10 |
| 2V2-15 | P0661002V2-15 | PUSH NUT 4MM V2.01.10 |
| 2V2-16 | P0661002V2-16 | LEFT PAWL V2.01.10 |
| 2V2-17 | P0661002V2-17 | RIGHT TORSN SPRING V2.01.10 |
| 2V2-18 | P0661002V2-18 | PAWL MOUNTING BRKT V2.01.10 |
| 2V2-19 | P0661002V2-19 | MOUNTING BRKT PIN V2.01.10 |
| 2V2-20 | P0661002V2-20 | MOUNTING BRKT SHFT V2.01.10 |

| REF | PART # | DESCRIPTION |
|--------|---------------|----------------------------------|
| 2V2-21 | P0661002V2-21 | SHAFT SPRING V2.01.10 |
| 2V2-22 | PEC07M | E-CLIP 7MM |
| 2V2-23 | P0661002V2-23 | LEFT TORSION SPRING V2.01.10 |
| 2V2-24 | P0661002V2-24 | RIGHT PAWL V2.01.10 |
| 2V2-25 | P0661002V2-25 | RIGHT PAWL SHAFT V2.01.10 |
| 2V2-26 | P0661002V2-26 | SPREADER V2.01.10 |
| 2V2-27 | PORP003 | O-RING 2.8 X 1.9 P3 |
| 2V2-28 | P0661002V2-28 | AMPUTATION HAZ LABEL V2.01.10 |
| 12 | H8243 | SWITCH ASSEMBLY |
| 12-1 | PS18M | PHLP HD SCR M4-.7 X 25 |
| 12-2 | PLW02M | LOCK WASHER 4MM |
| 12-3 | P0661012-3 | SWITCH |
| 12-4 | P0661012-4 | SWITCH BRACKET |
| 12-5 | P0661012-5 | SWITCH BOX |
| 12-6 | P0661012-6 | STRAIN RELIEF |
| 12-7 | P0661012-7 | POWER CORD 12AWG X 10' 6-15 PLUG |
| 12-7 | P0713012-7 | POWER CORD 12AWG X 10' 5-15 PLUG |
| 12-8 | P0661012-8 | MOTOR CORD 12AWG X 4' |
| 12-10 | P0661012-10 | SWITCH DISABLING LOCK |
| 13 | PB02M | HEX BOLT M6-1 X 12 |



Fence Breakdown

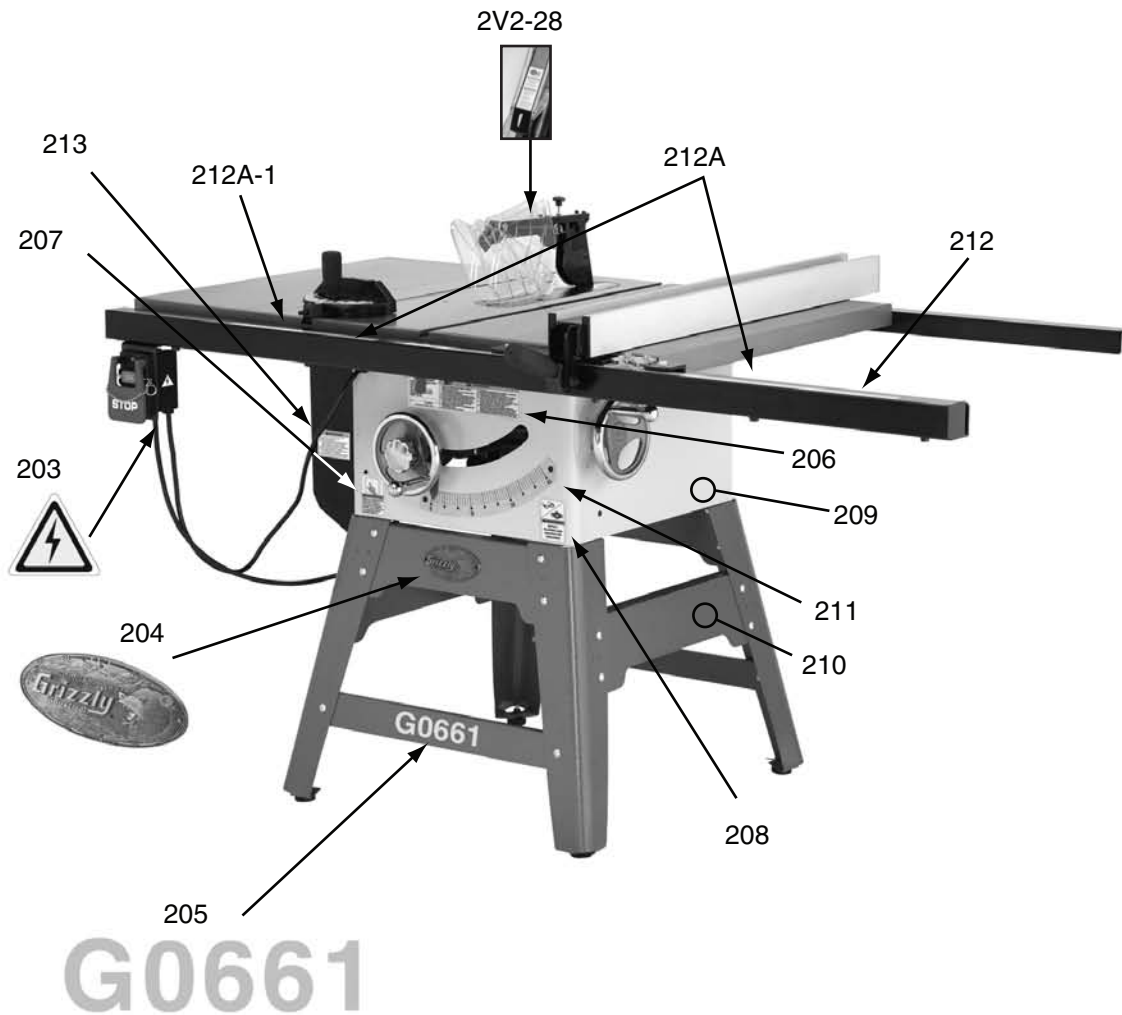


| REF | PART # | DESCRIPTION |
|-------|--------------|------------------------|
| 1 | P0661001 | FENCE ASSEMBLY |
| 1-1 | P0661001-1 | PLATE CAP |
| 1-2 | P0661001-2 | PLATE |
| 1-3 | PB71M | HEX BOLT M6-1 X 45 |
| 1-4 | P0661001-4 | CLAMPING BRACKET |
| 1-5 | P0661001-5 | PLATE |
| 1-6 | P0661001-6 | SPECIAL SCREW |
| 1-7V2 | P0661001-7V2 | POINTER 2-PCS V2.12.09 |
| 1-9V2 | PS37M | PHLP HD SCR M6-1 X 6 |
| 1-10 | P0661001-10 | FENCE |
| 1-11 | PN01M | HEX NUT M6-1 |
| 1-12 | P0661001-12 | REAR RAIL WHEEL |
| 1-13 | PN03M | HEX NUT M8-1.25 |
| 1-14 | PW01M | FLAT WASHER 8MM |
| 1-15 | P0661001-15 | PLASTIC SET SCREW |
| 1-16 | PB73M | HEX BOLT M10-1.5 X 50 |
| 1-17 | P0661001-17 | FENCE HANDLE |
| 1-18 | P0661001-18 | CAM ASSEMBLY |

| REF | PART # | DESCRIPTION |
|------|-------------|--------------------------------|
| 1-19 | P0661001-19 | PLATE |
| 1-20 | PS68M | PHLP HD SCR M6-1 X 10 |
| 1-21 | P0661001-21 | BRACKET |
| 1-22 | PLN05M | LOCK NUT M10-1.5 |
| 1-23 | PLN03M | LOCK NUT M6-1 |
| 1-24 | PSS20M | SET SCREW M8-1.25 X 8 |
| 1-26 | PFH49M | FLAT HD SCR M3-.5 X 6 |
| 7 | P0661007 | RAIL |
| 7-1 | P0661007-1 | SPECIAL CAP SCREW M8-1.25 X 25 |
| 7-2 | P0661007-2 | REAR RAIL |
| 7-3 | P0661007-3 | END CAP |
| 7-4 | P0661007-4 | RAIL TUBE |
| 7-5 | PFH21M | FLAT HD SCR M8-1.25 X 25 |
| 7-6 | P0661007-6 | FRONT RAIL |
| 7-7 | PFB27M | FLANGE BOLT M8-1.25 X 10 |
| 7-8 | PLW04M | LOCK WASHER 8MM |
| 7-9 | PN03M | HEX NUT M8-1.25 |



Label Placement



| REF | PART # | DESCRIPTION |
|--------|---------------|-------------------------------|
| 2V2-28 | P0661002V2-28 | AMPUTATION HAZ LABEL V2.01.10 |
| 203 | PLABEL-14 | ELECTRICITY LABEL |
| 204 | G9987 | GRIZZLY NAMEPLATE |
| 205 | P0661205 | MODEL # LABEL G0661 |
| 205 | P0713205 | MODEL # LABEL G0713 |
| 206 | P0661206 | ID LABEL G0661 |
| 206 | P0713206 | ID LABEL G0713 |
| 207 | PLABEL-12A | READ MANUAL LABEL |

| REF | PART # | DESCRIPTION |
|--------|-------------|-----------------------------|
| 208 | PLABEL-57 | GLASSES RESPIRATOR LABEL |
| 209 | PPAINT-11 | PUTTY TOUCHUP PAINT |
| 210 | PPAINT-1 | GRIZZLY GREEN TOUCHUP PAINT |
| 211 | P0661211 | BLADE TILT SCALE |
| 212 | P0661212 | FENCE SCALE 36" |
| 212A | P0661212A | FENCE SCALE SET 36" & 12" |
| 212A-1 | P0661212A-1 | FENCE SCALE 12" |
| 213 | P0651714 | UL 987 WARNING LABEL |

WARNING

Safety labels warn about machine hazards and ways to prevent injury. The owner of this machine **MUST** maintain the original location and readability of the labels on the machine. If any label is removed or becomes unreadable, **REPLACE** that label before using the machine again. Contact Grizzly at (800) 523-4777 or www.grizzly.com to order new labels.

