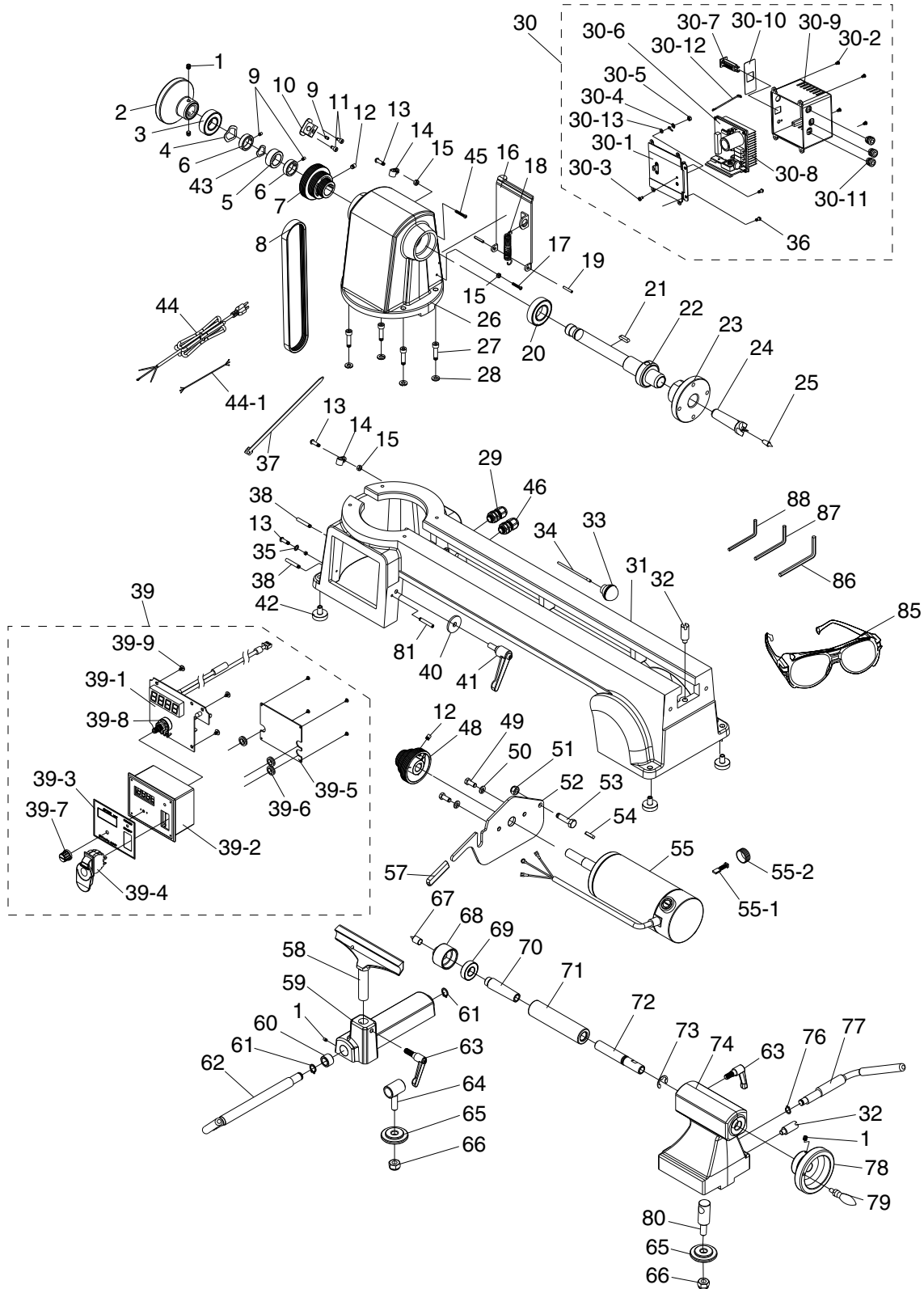


SECTION 9: PARTS

G0657 Main



G0657 Main Parts List

REF	PART #	DESCRIPTION
1	PSS11	SET SCREW 1/4-20 x 1/4
2	P0657002	SPINDLE HANDWHEEL
3	P0657003	BALL BEARING 6004-2RS
4	P0657004	WAVE WASHER 20MM
5	P0657005	SENSOR RING
6	P0657006	COLLAR
7	P0657007	SPINDLE PULLEY
8	P0657008	RIBBED V-BELT 3/16 X 1/2 X 23
9	PSS79M	SET SCREW M4-.7 X 6
10	P0657010	SENSOR BRACKET
11	PSB18M	CAP SCREW M4-.7 X 8
12	PSS02M	SET SCREW M6-1 X 6
13	PS08	PHLP HD SCR 10-24 X 3/4
14	P0657014	CORD CLAMP
15	PN07	HEX NUT 10-24
16	P0657016	REAR ACCESS COVER
17	PS03	PHLP HD SCR 10-24 X 1
18	P0657018	TENSION SPRING
19	PRP42M	ROLL PIN 3 X 20
20	P0657020	BALL BEARING 6005-2RS
21	PK34M	KEY 5 X 5 X 20
22	P0657022	SPINDLE
23	P0657023	FACEPLATE
24	P0657024	SPUR CENTER
25	P0657025	CENTER POINTER
26	P0657026	HEADSTOCK
27	P0657027	CENTER POINT
28	PLW02	LOCK WASHER 1/4
29	P0657029	STRAIN RELIEF PGA13.5-11
30	P0657030	CONTROL BOX
30-1	P0657030-1	DOOR PLATE
30-2	PS17M	PHLP HD SCR M4-.7 X 6
30-3	PS06	PHLP HD SCR 10-24 X 3/8
30-5	PN07	HEX NUT 10-24
30-6	P0657030-6	MOTOR CIRCUIT BOARD
30-7	P0657030-7	OVERLOAD SWITCH
30-8	P0657030-8	HEAT SINK
30-9	P0657030-9	CASE
30-10	P0657030-10	RESET LABEL
30-11	P0657030-11	STRAIN RELIEF
30-12	P0657030-12	JUMPER WIRE

REF	PART #	DESCRIPTION
30-13	P0657030-13	EXT TOOTH WASHER #10
31	P0657031	LATHE BED
32	P0657032	END STOP
33	P0657033	KNOCKOUT BAR HANDLE
34	P0657034	KNOCKOUT BAR ROD
35	P0657035	EXT TOOTH WASHER #10
36	PHTEK4	TAP SCREW 10-24 X 3/8
37	P0657037	ZIP TIE
38	PSS34M	SET SCREW M5-.8 X 16
39	P0657039	ELECTRIC BOX
39-1	P0657039-1	CIRCUIT BOARD
39-2	P0657039-2	CONTROL BOX
39-3	P0657039-3	BOX COVER
39-4	P0657039-4	SWITCH
39-5	P0657039-5	BACK PLATE
39-6	P0657039-6	GROMMET
39-7	P0657039-7	KNOB
39-8	P0657039-8	SPEED CONTROL
39-9	PHTEK4	TAP SCREW 10-24 X 3/8
40	P0657040	SPECIAL WASHER 8MM
41	P0657041	LEVER ASSEMBLY
42	P0657042	LEVELING FOOT
43	P0657043	WAVE WASHER 21MM
44	P0657044	POWER CORD
44-1	P0657044-1	WIRE HARNESS
45	PS08	PHLP HD SCR 10-24 X 3/4
46	P0657046	STRAIN RELIEF MG16A-10B-ST
48	P0657048	MOTOR PULLEY
49	PB02	HEX BOLT 1/4-20 X 5/8
50	PLW02	LOCK WASHER 1/4
51	PLN03	LOCK NUT 5/16-18
52	P0657052	MOTOR PLATE
53	PB12	HEX BOLT 5/16-18 X 1-1/4
54	PK48M	KEY 4 X 4 X 20
55	P0657055	MOTOR 1/2 HP 110V DC
55-1	P0657055-1	MOTOR BRUSH
55-2	P0657055-2	MOTOR BRUSH CAP
57	P0657057	RUBBER HANDLE
58	P0657058	TOOL REST
59	P0657059	TOOL REST BASE



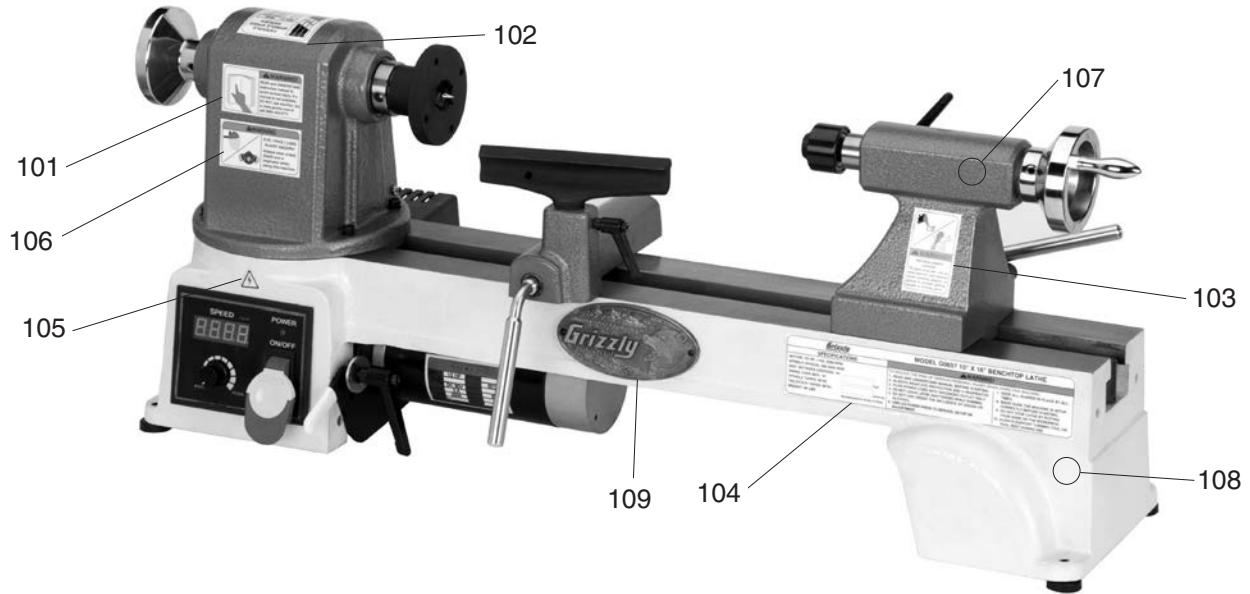
G0657 Main Parts List (Cont'd)

REF	PART #	DESCRIPTION
60	P0657060	BUSHING
61	PR03M	EXT RETAINING RING 12MM
62	P0657062	ECCENTRIC ROD
63	P0657063	TOOL REST LOCK HANDLE
64	P0657064	CLAMP BOLT
65	P0657065	CLAMP PLATE
66	PLN05M	LOCK NUT M10-1.5
67	P0657067	CENTER POINT
68	P0657068	LIVE CENTER HEAD
69	P0657069	BALL BEARING 6002ZZ
70	P0657070	LIVE CENTER SHAFT
71	P0657071	TAILSTOCK QUILL
72	P0657072	LEADSCREW

REF	PART #	DESCRIPTION
73	PEC12M	E-CLIP 12MM
74	P0657074	TAILSTOCK
76	PR01M	EXT RETAINING RING 10MM
77	P0657077	TAILSTOCK LEVER
78	P0657078	QUILL HANDWHEEL
79	P0657079	HANDWHEEL HANDLE
80	P0657080	TAILSTOCK CLAMP BOLT
81	PSS24M	SET SCREW M5-.8 X 25
85	P0657085	SAFETY GLASSES
86	PAW05M	HEX WRENCH 5MM
87	PAW03M	HEX WRENCH 3MM
88	PAW02.5M	HEX WRENCH 2.5MM



G0657 Labels



REF	PART #	DESCRIPTION
101	P0657101	READ MANUAL LABEL
102	P0657102	SPINDLE SPEED LABEL
103	P0657103	ENTANGLEMENT HAZARD
104	P0657104	MACHINE ID LABEL
105	PLABEL-14	ELECTRICITY LABEL

REF	PART #	DESCRIPTION
106	P0657106	EYE/FACE/LUNG LABEL
107	PPAINT-1	GRIZZLY GREEN TOUCH UP PAINT
108	PPAINT-11	GRIZZLY PUTTY TOUCH UP PAINT
109	G8588	GRIZZLY NAMEPLATE- SMALL

WARNING

Safety labels warn about machine hazards and ways to prevent injury. The owner of this machine **MUST** maintain the original location and readability of the labels on the machine. If any label is removed or becomes unreadable, **REPLACE** that label before using the machine again. Contact Grizzly at (800) 523-4777 or www.grizzly.com to order new labels.

