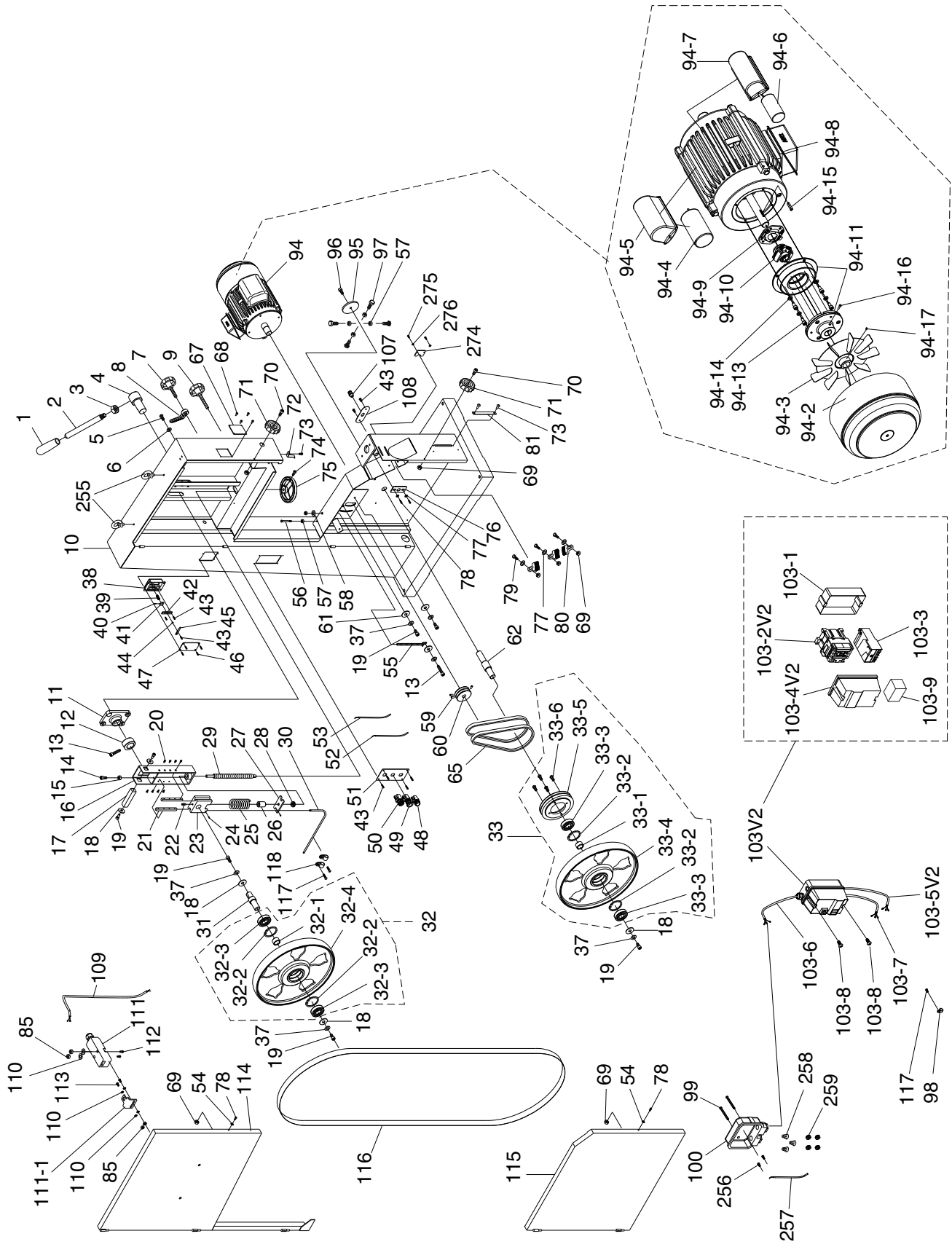


# G0636XB Main



# G0636XB Main Parts List

REF	PART #	DESCRIPTION
1	P0636XB001	HANDLE
2	P0636XB002	LEVER ROD M16-2
3	P0636XB003	HEX NUT M16-2
4	P0636XB004	ROTATE SHAFT
5	P0636XB005	BUTTON HD CAP SCR M10-1.5 X 20
6	P0636XB006	LOCK WASHER 10MM
7	P0636XB007	BLD TRACKING KNOB M10-1.5 x 25
8	P0636XB008	BLD TRACKING LOCK LEVER 10MM
9	P0636XB009	GD POST LOCK KNOB M10-1.5 X 25
10	P0636XB010	MACHINE BODY
11	P0636XB011	PILLOW BLOCK
12	P0636XB012	CAM
13	P0636XB013	CAP SCREW M8-1.25 X 25
14	P0636XB014	HEX BOLT M8-1.25 X 60
15	P0636XB015	HEX NUT M8-1.25
16	P0636XB016	UPPER WHEEL HINGE
17	P0636XB017	SQUARE SHAFT
18	P0636XB018	SQUARE SHAFT WASHER 8MM
19	P0636XB019	CAP SCREW M8-1.25 X 25
20	P0636XB020	FLAT HD SCR M5-.8 X 16
21	P0636XB021	LOCATE PLATE
22	P0636XB022	SET SCREW M10-1.5 X 16
23	P0636XB023	GUIDE BLOCK
24	P0636XB024	SET SCREW M5-.8 X 5
25	P0636XB025	COMPRESSION SPRING
26	P0636XB026	BUSHING
27	P0636XB027	PRESS BLOCK
28	P0636XB028	THRUST BEARING 51201
29	P0636XB029	BLADE TENSION SHAFT
30	P0636XB030	TENSION LINE
31	P0636XB031	UPPER WHEEL SHAFT
32	P0636XB032	UPPER WHEEL ASSEMBLY
32-1	P0636XB032-1	BUSHING
32-2	P0636XB032-2	INT RETAINING RING 72MM
32-3	P0636XB032-3	BALL BEARING 6306ZZ
32-4	P0636XB032-4	LOWER WHEEL
33	P0636XB033	LOWER WHEEL ASSEMBLY
33-1	P0636XB033-1	BUSHING
33-2	P0636XB033-2	INT RETAINING RING 72MM
33-3	P0636XB033-3	BALL BEARING 6306ZZ
33-4	P0636XB033-4	LOWER WHEEL
33-5	P0636XB033-5	WHEEL PULLEY
33-6	P0636XB033-6	BUTTON HD CAP SCR M8-1.25 X 20
37	P0636XB037	LOCK WASHER 8MM
38	P0636XB038	UPPER WHEEL SLIDING BRACKET
39	P0636XB039	COMPRESSION SPRING
40	P0636XB040	GUIDE PIN 3 X 12
41	P0636XB041	MOVING PLATE
42	P0636XB042	FIXED PLATE
43	P0636XB043	TAP SCREW M4 X 10
44	P0636XB044	FLAT WASHER 4MM
45	P0636XB045	TENSION POINTER
46	P0636XB046	TAP SCREW M4 X 16
47	P0636XB047	TENSION SCALE

REF	PART #	DESCRIPTION
48	P0636XB048	START SWITCH
49	P0636XB049	STOP SWITCH
50	P0636XB050	KEY SWITCH
51	P0636XB051	SWITCH PLATE
52	P0636XB052	CONNECTING CORD
53	P0636XB053	CONNECTING CORD
54	P0636XB054	LOCK WASHER 6MM
55	P0636XB055	ADJUST BOLT
56	P0636XB056	HEX BOLT M10-1.5 X 70
57	P0636XB057	HEX NUT M10-1.5
58	P0636XB058	FLAT WASHER 10MM
59	P0636XB059	SET SCREW M6-1 X 12
60	P0636XB060	MOTOR PULLEY
61	P0636XB061	FLAT WASHER 8MM
62	P0636XB062	LOWER SHAFT
65	P0636XB065	V-BELT 17-380
67	P0636XB067	TRACKING WINDOW
68	P0636XB068	RIVET 3.2 X 10
69	P0636XB069	LOCK NUT M6-1
70	P0636XB070	CAP SCREW M6-1 X 20
71	P0636XB071	KNOB
72	P0636XB072	HEIGHT POINTER
73	P0636XB073	FLANGE SCREW M5-.8 X 10
74	P0636XB074	CAP SCREW M6-1 X 25
75	P0636XB075	BLADE TENSION HANDLEWHEEL
76	P0636XB076	LOWER WHEEL SUPPORT
77	P0636XB077	FLAT WASHER 6MM
78	P0636XB078	FLANGE SCREW M6-1 X 10
79	P0636XB079	HEX BOLT M6-1 X 25
80	P0636XB080	BRUSH
81	P0636XB081	FOOT PEDAL COVER
85	P0636XB085	HEX NUT M4-.7
94	P0636XB094	MOTOR W/BRAKE 5HP 1PH 230V
94-2	P0636XB094-2	MOTOR FAN COVER
94-3	P0636XB094-3	MOTOR FAN
94-4	P0636XB094-4	S CAPACITOR 300M 250V 1-3/4 x 4
94-5	P0636XB094-5	S CAPACITOR COVER
94-6	P0636XB094-6	R CAPACITOR 45M 450V 2 x 3-1/2
94-7	P0636XB094-7	R CAPACITOR COVER
94-8	P0636XB094-8	JUNCTION BOX
94-8	P0636XB094-8	JUNCTION BOX
94-9	P0636XB094-9	CENTRIFUGAL SWITCH PLATE
94-10	P0636XB094-10	CENTRIFUGAL SWITCH
94-11	P0636XB094-11	MAGNETIC BRAKE W/SHOE
94-13	P0636XB094-13	CAP SCREW M6-1 X 12
94-14	P0636XB094-14	LOCK WASHER 6MM
94-15	P0636XB094-15	KEY 5 X 5 X 25
94-16	P0636XB094-16	CAP SCREW M5-.8 X 16
94-17	P0636XB094-17	SET SCREW M6-1 X 6
95	P0636XB095	ADJUSTMENT HUB COVER
96	P0636XB096	BUTTON HD CAP SCR M8-1.25 X 20
97	P0636XB097	HEX BOLT M10-1.5 X 35
98	P0636XB098	CORD CLAMP 1/2"
99	P0636XB099	FLANGE SCREW M5-.8 X 50



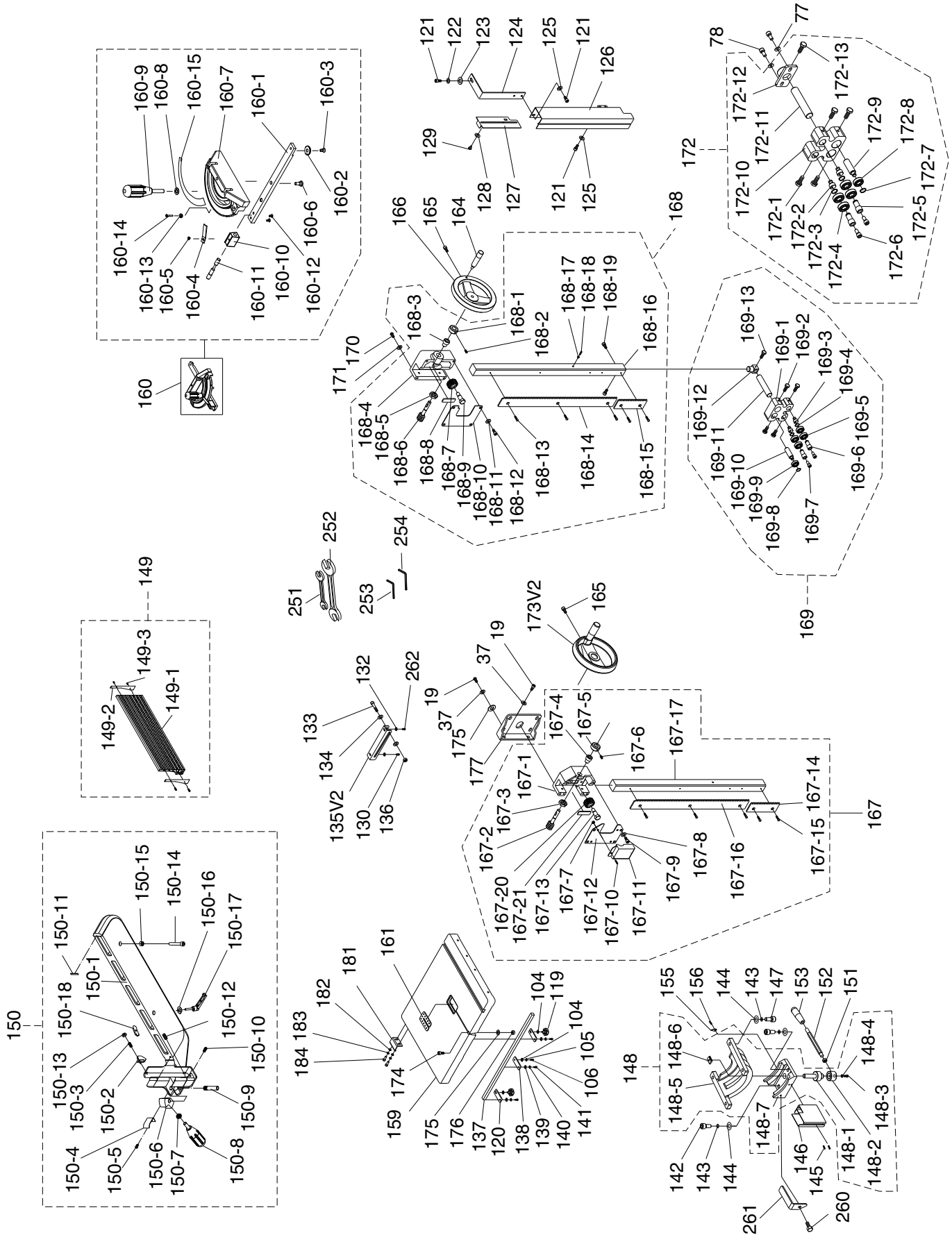
# G0636XB Main Parts List

REF	PART #	DESCRIPTION
100	P0636XB100	TERMINAL BOX
103V2	P0636XB103V2	MAG SWITCH ASSY SDE MPE-30 22A V2.11.10
103-1	P0636XB103-1	MAG SWITCH BACK COVER
103-2V2	P0636XB103-2V2	CONTACTOR SDE MA-30 230V V2.11.10
103-3	P0636XB103-3	OL RELAY SDE RA-30 18-26A
103-4V2	P0636XB103-4V2	MAG SWITCH FRONT COVER V2.11.10
103-5V2	P0636XB103-5V2	CONNECTING CORD 16G 5W V2.11.10
103-6	P0636XB103-6	POWER CORD 12G 3W
103-7	P0636XB103-7	MOTOR CORD 12G 5W
103-8	P0636XB103-8	FLANGE SCREW M5-.8 X 10
103-9	P0636XB103-9	RECTIFIER PU-23-2
107	P0636XB107	STRAIN RELIEF M13.5
108	P0636XB108	PLATE
109	P0636XB109	SWITCH CORD 18G 2W
110	P0636XB110	FLAT WASHER 4MM
111	P0636XB111	DOOR LATCH SWITCH ADZ-S11

REF	PART #	DESCRIPTION
111-1	P0636XB111-1	DOOR LATCH
112	P0636XB112	FLANGE SCREW M4-.7 X 35
113	P0636XB113	PHLP HD SCR M4-.7 X 10
114	P0636XB114	UPPER WHEEL COVER
115	P0636XB115	LOWER WHEEL COVER
116	P0636XB116	SAW BLADE 3TPI 162" X 1" X 0.035
117	P0636XB117	TAP SCREW M4 X 10
118	P0636XB118	CORD CLAMP 5/16"
255	P0636XB255	EYE BOLT M10-1.5- X 15
256	P0636XB256	PHLP HD SCR M4-.7 X 10
257	P0636XB257	CONNECTING CORD 12G 1W
258	P0636XB258	WIRE NUT P3
259	P0636XB259	EXT TOOTH WASHER 5MM
274	P0636XB274	STOP PLATE
275	P0636XB275	CAP SCREW M5-.8 X 12
276	P0636XB276	FLAT WASHER 5MM



# G0636XB Fence/Guides/Trunnion



# G0636XB Fence/Guides/Trunnion Parts List

REF	PART #	DESCRIPTION
19	P0636XB019	CAP SCREW M8-1.25 X 25
37	P0636XB037	LOCK WASHER 8MM
77	P0636XB077	FLAT WASHER 6MM
78	P0636XB078	FLANGE SCREW M6-1 X 10
104	P0636XB104	FLAT WASHER 8MM
105	P0636XB105	LOCK WASHER 8MM
106	P0636XB106	CAP SCREW M8-1.25 X 20
119	P0636XB119	KNOB BOLT M8-1.25 X 20
120	P0636XB120	OUTER RAIL PLATE
121	P0636XB121	CAP SCREW M6-1 X 10
122	P0636XB122	LOCK WASHER 6MM
123	P0636XB123	FLAT WASHER 6MM
124	P0636XB124	SUPPORT PLATE
125	P0636XB125	FLAT WASHER 6MM
126	P0636XB126	PROTECT COVER (ASM)
127	P0636XB127	SLIDING PLATE
128	P0636XB128	FIBER WASHER 13MM
129	P0636XB129	SHOULDER SCREW
130	P0636XB130	CAP SCREW M6-1 X 10
132	P0636XB132	FLAT WASHER 6MM
133	P0636XB133	HEX BOLT M8-1.25 X 55
134	P0636XB134	FLAT WASHER 8MM
135V2	P0636XB135	SLIDING PLATE V2.11.11
136	P0636XB136	LOCK NUT M8-1.25
137	P0636XB137	GUARD RAIL
138	P0636XB138	GUARD RAIL PLATE
139	P0636XB139	FLAT WASHER 6MM
140	P0636XB140	LOCK WASHER 6MM
141	P0636XB141	CAP SCREW M6-1 X 20
142	P0636XB142	CAP SCREW M10-1.5 X 30
143	P0636XB143	LOCK WASHER 10MM
144	P0636XB144	FLAT WASHER 10MM
145	P0636XB145	FLANGE SCREW M6-1 X 10
146	P0636XB146	BLADE GUARD
147	P0636XB147	CAP SCREW M10-1.5 X 35
148	P0636XB148	TRUNNION BRACKET ASSEMBLY
148-1	P0636XB148-1	PRESS SHAFT
148-2	P0636XB148-2	MICRO ADJUSTING RING
148-3	P0636XB148-3	CAP SCREW M8-1.25 X 20
148-4	P0636XB148-4	LOCK WASHER 8MM
148-5	P0636XB148-5	TRUNNION BLOCK
148-6	P0636XB148-6	PRESS BLOCK
148-7	P0636XB148-7	TRUNNION HOUSING
149	P0636XB149	RESAW FENCE ASSEMBLY
149-1	P0636XB149-1	RESAW FENCE(AL) 590MM
149-2	P0636XB149-2	TAP SCREW M3.5 X 8
149-3	P0636XB149-3	FENCE PIECE 148 X 22 X 1
150	P0636XB150	FENCE ASSMBLY
150-1	P0636XB150-1	FENCE
150-2	P0636XB150-2	POINTER
150-3	P0636XB150-3	SET SCREW M8-1.25 X 20
150-4	P0636XB150-4	SPRING PIECE

REF	PART #	DESCRIPTION
150-5	P0636XB150-5	FLANGE SCREW M4-.7 X 8
150-6	P0636XB150-6	PIVOT BLOCK
150-7	P0636XB150-7	HEX NUT M8-1.25
150-8	P0636XB150-8	HANDLE
150-9	P0636XB150-9	SHAFT
150-10	P0636XB150-10	SET SCREW PLASTIC
150-11	P0636XB150-11	NYLON PAD
150-12	P0636XB150-12	SET SCREW M8-1.25 X 12
150-13	P0636XB150-13	HEX NUT M8-1.25
150-14	P0636XB150-14	CAP SCREW M8-1.25 X 15
150-15	P0636XB150-15	HEX NUT M8-1.25
150-16	P0636XB150-16	FLAT WASHER 8MM
150-17	P0636XB150-17	LOCK HANDLE M8-1.25 X 44
150-18	P0636XB150-18	MOVING PLATE
151	P0636XB151	HEX NUT M12-1.75
152	P0636XB152	HANDLE SHAFT
153	P0636XB153	HANDLE KNOB M12-1.75 (FEMALE)
155	P0636XB155	POINTER
156	P0636XB156	PHLP HD SCR M4-.7 X 10
159	P0636XB159	TABLE
160	P0636XB160	MITER GAUGE ASSEMBLY
160-1	P0636XB160-1	GUIDE BAR
160-2	P0636XB160-2	GUIDE PIECE
160-3	P0636XB160-3	FLAT HD SCR M6-1 X 8
160-4	P0636XB160-4	POINTER
160-5	P0636XB160-5	PHLP HD SCR 10-24 X 3/8
160-6	P0636XB160-6	SHOULDER SCREW
160-7	P0636XB160-7	MITER GAUGE BODY
160-8	P0636XB160-8	FLAT WASHER 8MM
160-9	P0636XB160-9	HANDLE
160-10	P0636XB160-10	FIXED BLOCK
160-11	P0636XB160-11	LOCKING SHAFT
160-12	P0636XB160-12	PHLP HD SCR 10-24 X 3/8
160-13	P0636XB160-13	HEX NUT M4-.7
160-14	P0636XB160-14	PHLP HD SCR M4-.7 X 16
160-15	P0636XB160-15	SCALE
161	P0636XB161	TABLE INSERT
164	P0636XB164	HANDLE 3/8-16 X 1/2
165	P0636XB165	CAP SCREW M6-1 X 25
166	P0636XB166	HANDWHEEL 7" (STEEL)
167	P0636XB167	TABLE TILT ASSEMBLY
167-1	P0636XB167-1	GUIDE BRACKET
167-2	P0636XB167-2	WORM SHAFT
167-3	P0636XB167-3	HEX NUT M16-1.5
167-4	P0636XB167-4	BUSHING
167-5	P0636XB167-5	LOCK COLLAR
167-6	P0636XB167-6	SET SCREW M5-.8 X 5
167-7	P0636XB167-7	HEX NUT M5-.8
167-8	P0636XB167-8	LOCK WASHER 8MM
167-9	P0636XB167-9	CAP SCREW M8-1.25 X 16
167-10	P0636XB167-10	FLANGE SCREW M5-.8 X 10
167-11	P0636XB167-11	COVER



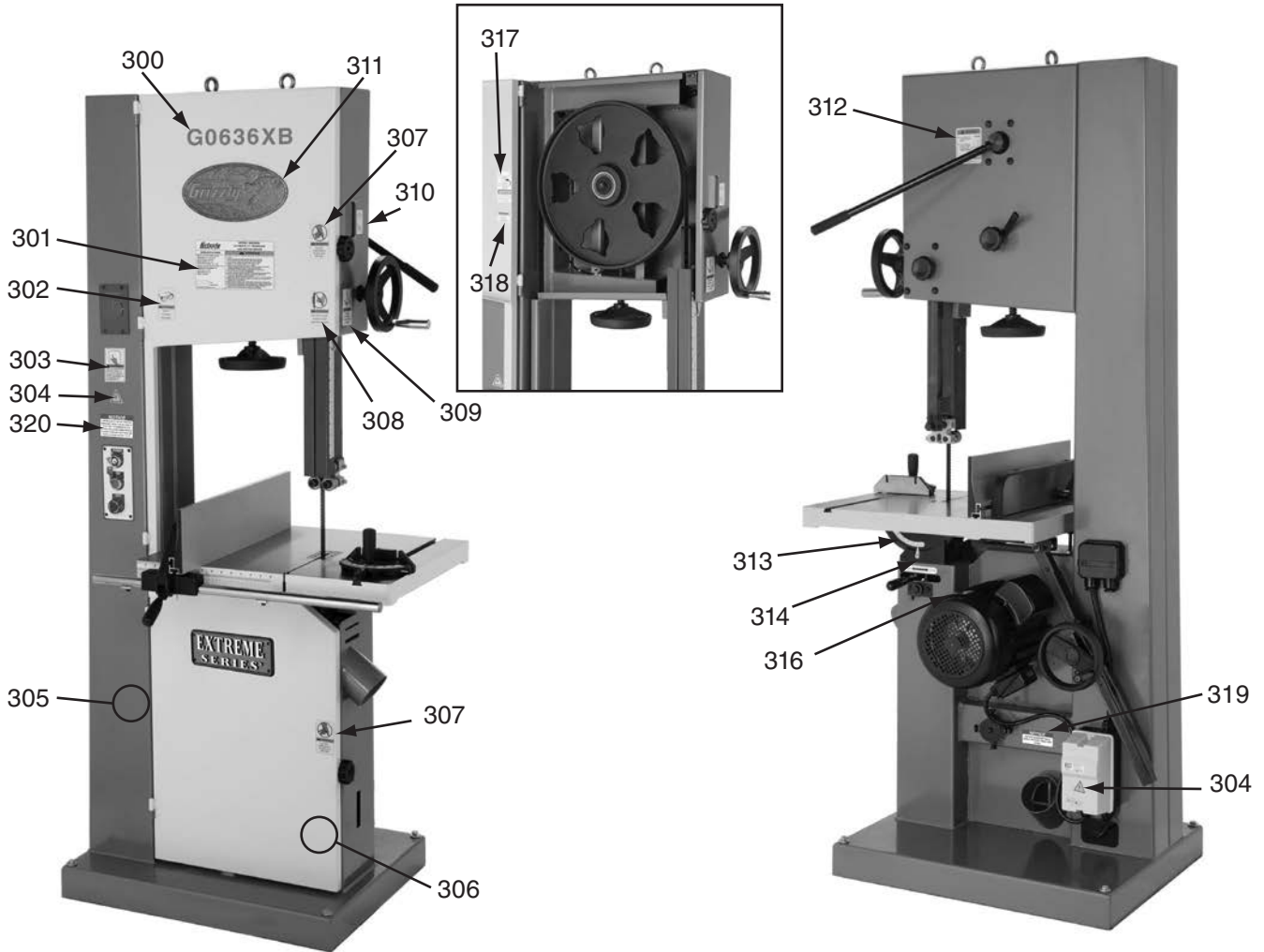
# G0636XB Fence/Guides/Trunnion Parts List

REF	PART #	DESCRIPTION
167-12	P0636XB167-12	COVER
167-13	P0636XB167-13	FIXED BOLT 12 X 43 X 10M 1.5P
167-14	P0636XB167-14	EXTENSION RACK
167-15	P0636XB167-15	FLAT HD SCR M4-.7 X 10
167-16	P0636XB167-16	RACK
167-17	P0636XB167-17	UPPER GUIDE BAR
167-20	P0636XB167-20	PINION GEAR
167-21	P0636XB167-21	FIXED PLATE
168	P0636XB168	UPPER GUIDE ASSEMBLY
168-1	P0636XB168-1	LOCK COLLAR
168-2	P0636XB168-2	SET SCREW M5-.8 X 5
168-3	P0636XB168-3	BUSHING
168-4	P0636XB168-4	UPPER GUIDE BRACKET
168-5	P0636XB168-5	HEX NUT M16-1.5
168-6	P0636XB168-6	WORM SHAFT
168-7	P0636XB168-7	WORM GEAR
168-8	P0636XB168-8	FIXED PLATE
168-9	P0636XB168-9	FIXED BOLT
168-10	P0636XB168-10	COVER
168-11	P0636XB168-11	LOCK WASHER 8MM
168-12	P0636XB168-12	HEX BOLT M8-1.25 X 12
168-13	P0636XB168-13	FLAT HD SCR M4-.7 X 10
168-14	P0636XB168-14	RACK
168-15	P0636XB168-15	EXTENSION RACK
168-16	P0636XB168-16	UPPER GUIDE BAR
168-17	P0636XB168-17	HEX NUT M4-.7
168-18	P0636XB168-18	PHLP HD SCR M4-.7 X 10
168-19	P0636XB168-19	CAP SCREW M6-1 X 16
169	P0636XB169	UPPER BLADE GUIDE ASSEMBLY
169-1	P0636XB169-1	UPPER BLADE GUIDE SUPPORT
169-2	P0636XB169-2	HEX BOLT M6-1 X 16
169-3	P0636XB169-3	ECCENTRIC SHAFT
169-4	P0636XB169-4	EXT RETAINING RING 15MM
169-5	P0636XB169-5	BALL BEARING 6202ZZ
169-6	P0636XB169-6	HANDLE BEARING
169-7	P0636XB169-7	CAP SCREW M6-1 X 40
169-8	P0636XB169-8	EXT RETAINING RING 12MM

REF	PART #	DESCRIPTION
169-9	P0636XB169-9	BALL BEARING 6201ZZ
169-10	P0636XB169-10	UPPER SPACING SLEEVE
169-11	P0636XB169-11	SHAFT
169-12	P0636XB169-12	UPPER GUIDE SUPPORT BLOCK
169-13	P0636XB169-13	HEX BOLT M6-1 X 10
170	P0636XB170	BUTTON HD CAP SCR M8-1.25 X 35
171	P0636XB171	FLAT WASHER 8MM
172	P0636XB172	LOWER BLADE GUIDE ASSEMBLY
172-1	P0636XB172-1	HEX BOLT M6-1 X 16
172-2	P0636XB172-2	ECCENTRIC SHAFT
172-3	P0636XB172-3	EXT RETAINING RING 15MM
172-4	P0636XB172-4	BALL BEARING 6202ZZ
172-5	P0636XB172-5	HANDLE BUSHING
172-6	P0636XB172-6	CAP SCREW M6-1 X 40
172-7	P0636XB172-7	EXT RETAINING RING 12MM
172-8	P0636XB172-8	BALL BEARING 6201ZZ
172-9	P0636XB172-9	SPACING SLEEVE
172-10	P0636XB172-10	BLADE GUIDE SUPPORT
172-11	P0636XB172-11	SHAFT
172-12	P0636XB172-12	LOWER SUPPORT BRACKET
172-13	P0636XB172-13	HEX BOLT M6-1 X 16
173V2	P0636XB173V2	HANDWHEEL V2.06.08
174	P0636XB174	HEX BOLT M8-1.25 X 50
175	P0636XB175	FLAT WASHER 8MM
176	P0636XB176	HEX NUT M8-1.25
177	P0636XB177	SUPPORT PLATE
181	P0636XB181	STOP BRACKET
182	P0636XB182	LOCK WASHER 6MM
183	P0636XB183	FLAT WASHER 6MM
184	P0636XB184	HEX BOLT M6-1 X 16
251	P0636XB251	WRENCH 10/13
252	P0636XB252	WRENCH 17/19
253	P0636XB253	HEX WRENCH 5MM
254	P0636XB254	HEX WRENCH 6MM
260	P0636XB260	FLANGE SCREW M6-1 X 12
261	P0636XB261	L-HOLDER PLATE
262	P0636XB262	CAP SCREW M6-1 X 12



# G0636XB Labels



REF	PART #	DESCRIPTION
300	P0636XB300	MODEL NUMBER LABEL
301	P0636XB301	MACHINE ID LABEL
302	P0636XB302	SAFETY GLASSES LABEL
303	P0636XB303	READ MANUAL LABEL
304	P0636XB304	ELECTRICITY LABEL
305	P0636XB305	GRIZZLY GREEN PAINT
306	P0636XB306	GREY PUTTY TOUCH UP PAINT
307	P0636XB307	DONT OPEN LABEL 2"W X 3 5/16"H
308	P0636XB308	HANDS/BS BLADE LABEL 2" X 3 5/16"H
309	P0636XB309	UNPLUG BANDSAW LABEL 2" X 3 5/16"H

REF	PART #	DESCRIPTION
310	P0636XB310	BLADE ASSEMBLY DIRECTION LABEL
311	P0636XB311	GRIZZLY NAMEPLATE-LARGE
312	P0636XB312	TENSION ADJ LABEL
313	P0636XB313	TABLE ANGLE SCALE
314	P0636XB314	TABLE LOCK LEVER LABEL
316	P0636XB316	MOTOR LABEL
317	P0636XB317	UPPER WHEEL HINGE/STOP BOLT LABEL
318	P0636XB318	PATENT LABEL
319	P0636XB319	TABLE LOCK LABEL
320	P0636XB320	MAGNETIC BRAKE NOTICE

## WARNING

Safety labels help reduce the risk of serious injury caused by machine hazards. If any label comes off or becomes unreadable, the owner of this machine **MUST** replace it in the original location before resuming operations. For replacements, contact (800) 523-4777 or [www.grizzly.com](http://www.grizzly.com).

