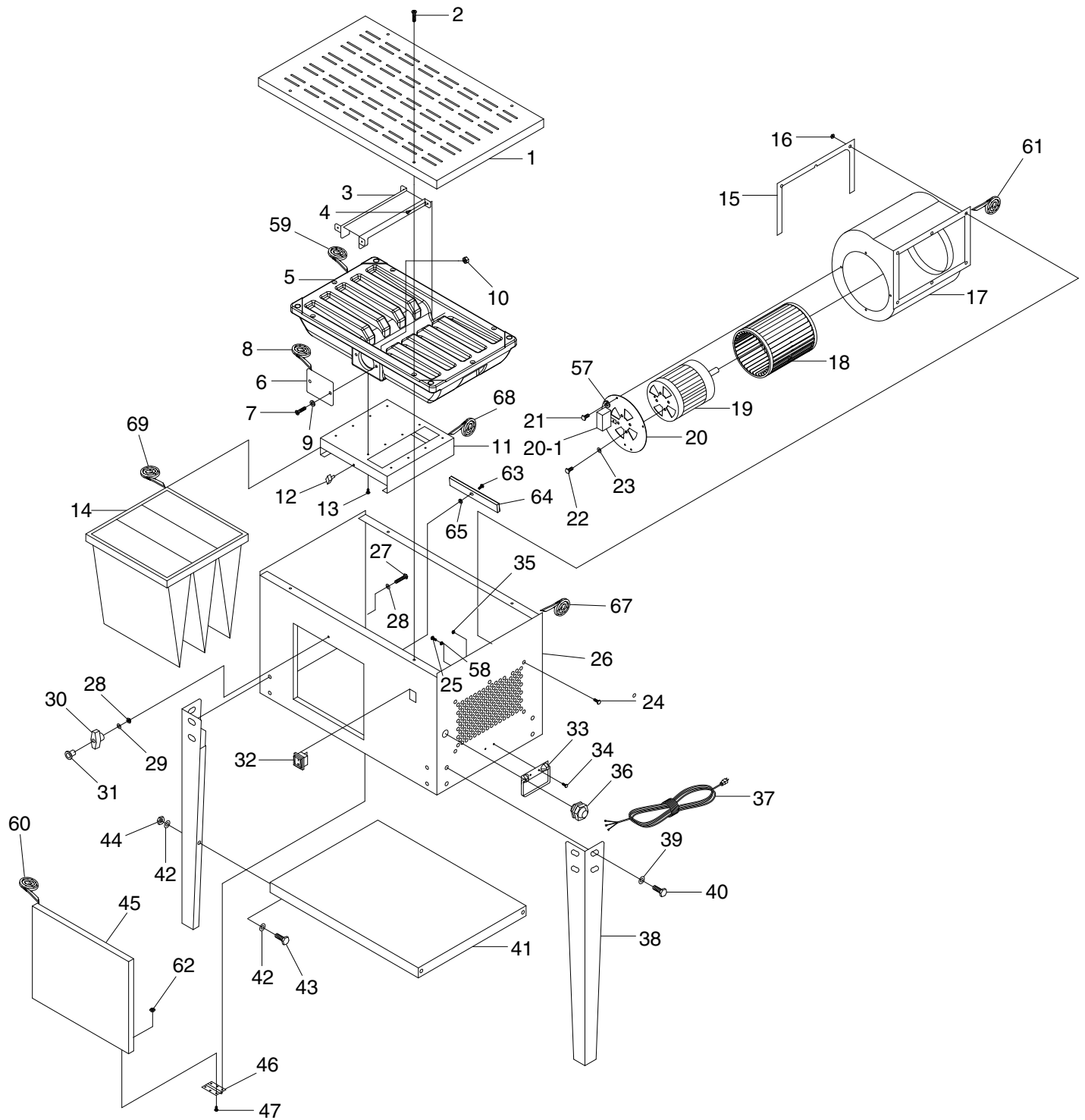


# G0626 Parts Breakdown



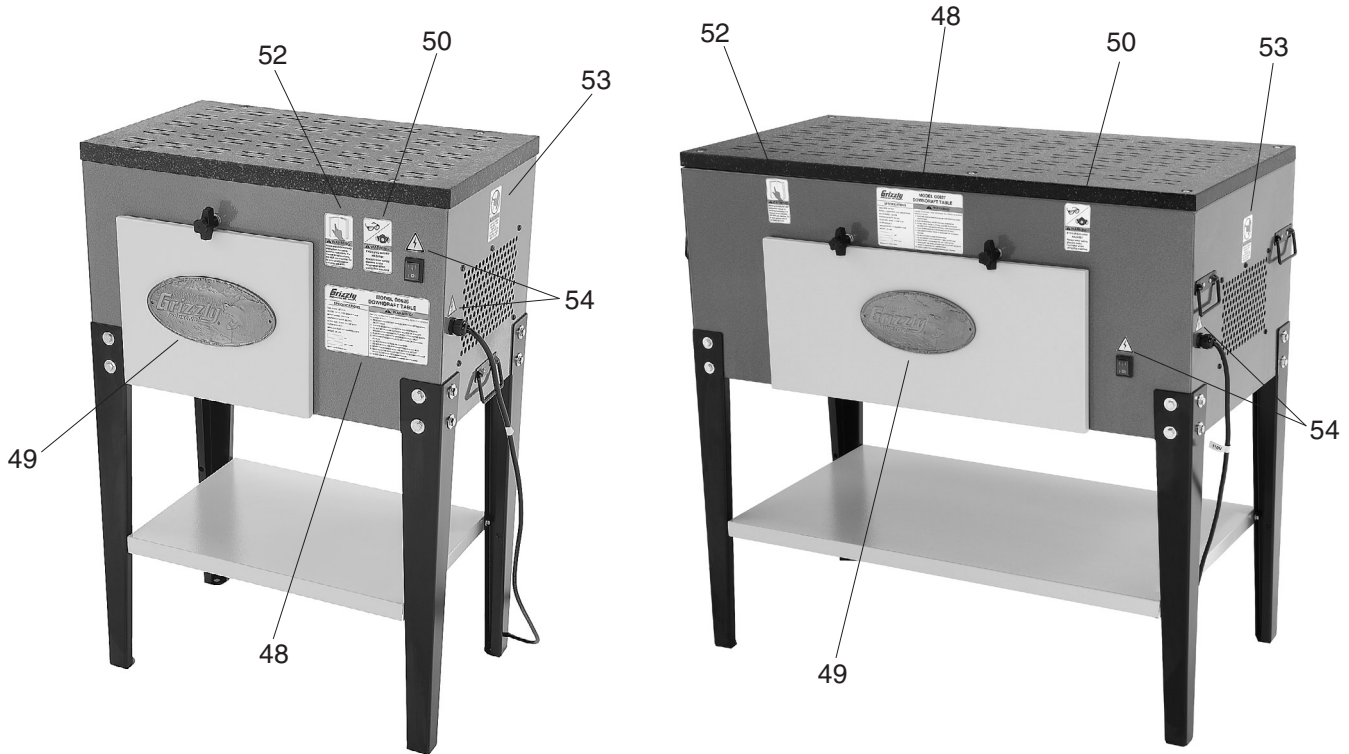
# G0626 Parts List

REF	PART #	DESCRIPTION
1	P0626001	TABLE TOP
2	PFH15	FLAT HD SCR 1/4-20 X 1 1/2
3	P0626003	DUST DEFLECTOR
4	PHTEK5M	TAP SCREW M4 X 12
5	P0626005	TABLE BASE
6	P0626006	OUTLET COVER
7	PB31	HEX BOLT 1/4-20 X 1
8	P0626008	GASKET
10	PN05	HEX NUT 1/4-20
11	P0626011	DUST FILTER CASE
12	P0626012	KNOB M6-1 X 14
13	P0626013	TAP SCREW M5 X 12
14	P0626014	FILTER BAG
15	P0626015	BLOWER SUPPORT
16	PN05	HEX NUT 1/4-20
17	P0626017	BLOWER HOOD
18	P0626018	IMPELLER
19	P0626019	MOTOR
20	P0626020	MOTOR SUPPORT
20-1	P0626020-1	CAPACITOR 16MFD 250VAC
21	PS38M	PHLP HD SCR M4-.7 X 10
22	PS68M	PHLP HD SCR M6-1 X 10
23	PW06	FLAT WASHER 1/4
24	PS02	PHLP HD SCR 1/4-20 X 3/4
25	PS06M	PHLP HD SCR M5-.8 X 20
26	P0626026	TABLE CABINET
27	PS54M	PHLP HD SCR M5-.8 X 45
28	PN06M	HEX NUT M5-.8
29	P0626029	FLAT WASHER 3/16
30	P0626030	KNOB 5/16-18

REF	PART #	DESCRIPTION
31	P0626031	KNOB M5-.8
32	P0626032	SWITCH
33	P0626033	HANDLE
34	PS38M	PHLP HD SCR M4-.7 X 10
35	PN04M	HEX NUT M4-.7
36	P0626036	STRAIN RELIEF
37	P0626037	POWER CORD
38	P0626038	LEG
39	PW07	FLAT WASHER 5/16
40	PB07	HEX BOLT 5/16-18 X 3/4
41	P0626041	BASE SHELF
42	PW07	FLAT WASHER 5/16
43	PB07	HEX BOLT 5/16-18 X 3/4
44	PN02	HEX NUT 5/16-18
45	P0626045	CABINET DOOR
46	P0626046	DOOR HINGE
47	PS38M	PHLP HD SCR M4-.7 X 10
57	P0626057	INT TOOTH WASHER 5MM
58	PN06M	HEX NUT M5-.8
59	P0626059	GASKET
60	P0626060	GASKET
61	P0626061	GASKET
62	PN04M	HEX NUT M4-.7
63	P0626063	TAP SCREW M5 X 12
64	P0626064	GROUNDING BAR
65	P0626065	INT TOOTH WASHER 5MM
67	P0626067	GASKET
68	P0626068	GASKET
69	P0626069	GASKET



# G0626/G0627 Safety Label Placement



REF	PART #	DESCRIPTION
48	P0626048	G0626 MACHINE ID LABEL
48	P0627048	G0627 MACHINE ID LABEL
49	G8588	GRIZZLY NAMEPLATE
50	PLABEL-43	RESPIRATOR/GLASSES LABEL
52	PLABEL-12A	READ MANUAL - VERTICAL

REF	PART #	DESCRIPTION
53	P0626053	NO HANDS IN OUTLET
54	PLABEL-14	ELECTRICITY LABEL
55	PPAINT-1	GRIZZLY GREEN TOUCH UP PAINT
56	PPAINT-11	GRIZZLY PUTTY TOUCH UP PAINT

## WARNING

Safety labels warn about machine hazards and ways to prevent injury. The owner of this machine **MUST** maintain the original location and readability of the labels on the machine. If any label is removed or becomes unreadable, **REPLACE** that label before using the machine again. Contact Grizzly at (800) 523-4777 or [www.grizzly.com](http://www.grizzly.com) to order new labels.

