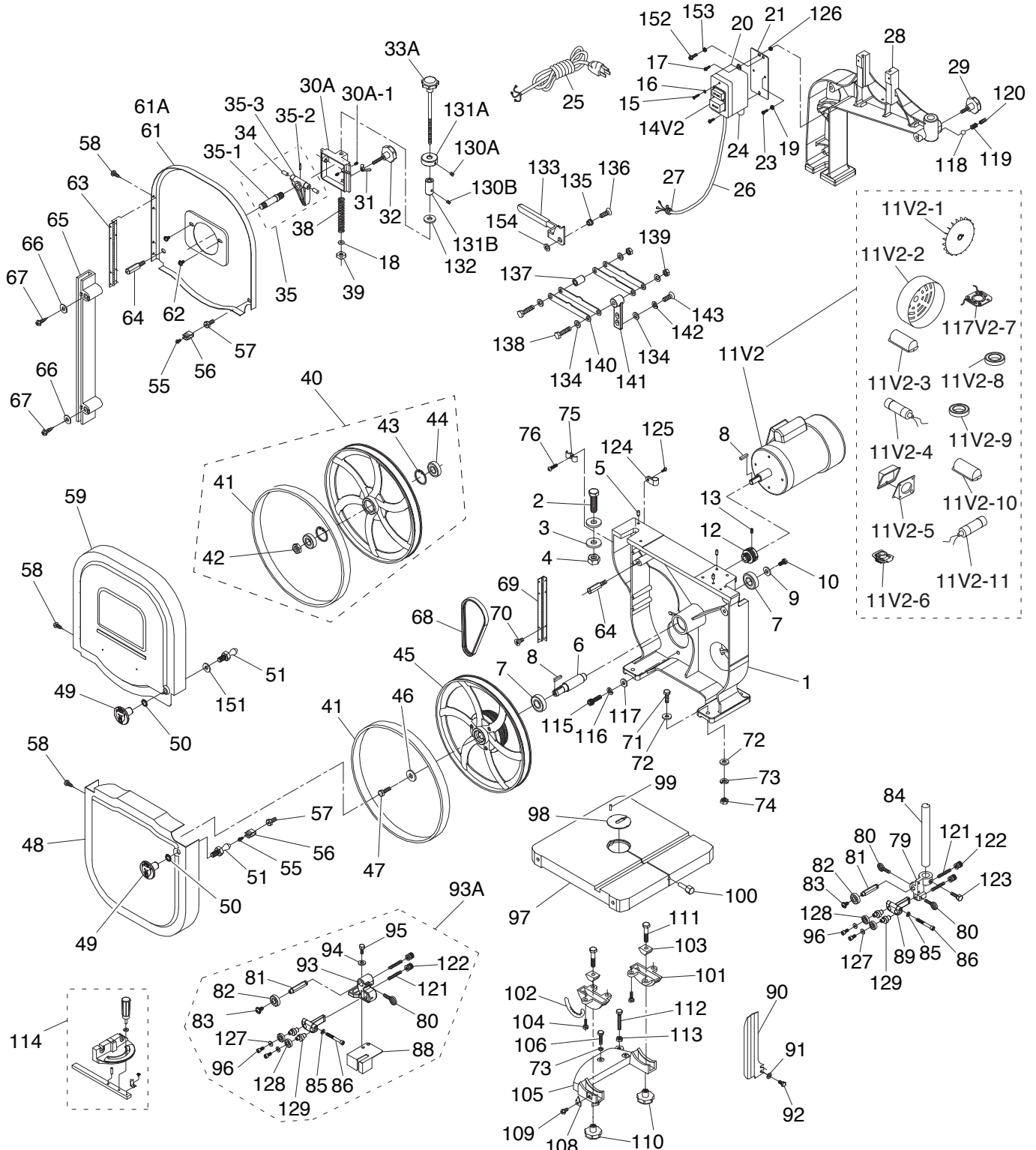


SECTION 9: PARTS

We do our best to stock replacement parts when possible, but we cannot guarantee that all parts shown are available for purchase. Call (800) 523-4777 or visit www.grizzly.com/parts to check for availability.

Main



Main Parts List

REF	PART #	DESCRIPTION
1	P0555001	BASE
2	P0555002	HEX BOLT M16-2 X 55
3	P0555003	FLAT WASHER 16MM
4	P0555004	HEX NUT M16-2
5	P0555005	ALIGNMENT PIN
6	P0555006	LOWER WHEEL SHAFT
7	P0555007	BALL BEARING 6204 LLU
8	P0555008	KEY 5 X 5 X 25
9	P0555009	SHAFT WASHER 30 X 8 X 3MM
10	P0555010	PHLP HD SCR M8-1.25 X 16
11V2	P0555011V2	MOTOR 1HP 110/220V 60HZ V2.05.11
11V2-1	P0555011V2-1	MOTOR FAN
11V2-2	P0555011V2-2	MOTOR FAN COVER
11V2-3	P0555011V2-3	S CAPACITOR COVER
11V2-4	P0555011V2-4	S CAPACITOR 200M 250V
11V2-5	P0555011V2-5	JUNCTION BOX
11V2-6	P0555011V2-6	CENTRIFUGAL SWITCH
11V2-7	P0555011V2-7	CONTACT PLATE
11V2-8	P0555011V2-8	BALL BEARING 6202ZZ
11V2-9	P0555011V2-9	BALL BEARING 6205ZZ
11V2-10	P0555011V2-10	R CAPACITOR COVER
11V2-11	P0555011V2-11	R CAPACITOR 20M 250V
12	P0555012	MOTOR PULLEY
13	P0555013	SET SCREW M6-1 X 12
14V2	P0555014V2	ON/OFF SWITCH 110/220V V2.05.11
15	P0555015	TAP SCREW M3.5 X 12
16	P0555016	FLAT WASHER 4MM
17	P0555017	PHLP HD SCR M5-.8 X 16
18	P0555018	TENSION INDICATOR
19	P0555019	EXT TOOTH WASHER 5MM
20	P0555020	SWITCH BOX
21	P0555021	SWITCH BOX MOUNT
23	P0555023	PHLP HD SCR M5-.8 X 6
24	P0555024	STRAIN RELIEF
25	P0555025	POWER CORD 16G 3C 6FT 5-15
26	P0555026	MOTOR CORD
27	P0555027	STRAIN RELIEF
28	P0555028	UPPER FRAME ARM
29	P0555029	KNOB BOLT M10-1.5 X 30
30A	P0555030A	UPPER WHEEL SLIDING BRACKET V2.07.07
30A-1	P0555030A-1	SET SCREW M5-.8 X 8
31	P0555031	WING NUT M8-1.25
32	P0555032	KNOB BOLT M8-1.25 X 45
33A	P0555033A	BLADE ADJ SCR ASSY 7" THREAD
34	P0555034	DOWEL PIN
35	P0555035	UPPER WHEEL SHAFT HINGE ASSY
35-1	P0555035-1	UPPER WHEEL SHAFT
35-2	P0555035-2	ROLL PIN 3 X 6
35-3	P0555035-3	UPPER WHEEL SHAFT HINGE
38	P0555038	COMPRESSION SPRING 3.8 X 13.5 X 81
39	P0555039	SQUARE NUT M10-1.5
40	P0555040	UPPER WHEEL ASSY.
41	P0555041	WHEEL TIRE 14"
42	P0555042	HEX NUT M12-1.25
43	P0555043	INT RETAINING RING 35MM

REF	PART #	DESCRIPTION
44	P0555044	BALL BEARING 6202 LLU
45	P0555045	LOWER WHEEL ASSY W/TIRE
46	P0555046	SHAFT WASHER 30 X 8 X 3MM
47	P0555047	HEX BOLT M8-1.25 X 20 LH
48	P0555048	LOWER WHEEL COVER
49	P0555049	KNOB M8-1.25
50	P0555050	INT TOOTH WASHER 8MM
51	P0555051	DOOR LATCH STUD M8-1.25 X 14
55	P0555055	PHLP HD SCR M5-.8 X 12
56	P0555056	CATCH
57	P0555057	ALIGNMENT BOLT M5-.8 X 27
58	P0555058	TAP SCREW M4 X 8
59	P0555059	FRONT UPPER WHEEL COVER
61A	P0555061A	REAR UPPER WHEEL COVER V2.07.07
62	P0555062	FLANGE SCREW M5-.8 X 8
63	P0555063	UPPER WHEEL COVER HINGE
64	P0555064	WHEEL COVER STANDOFF
65	P0555065	LEFT BLADE GUARD
66	P0555066	SPECIAL FLANGE WASHER 4MM
67	P0555067	TAP SCREW M3.5 X 16
68	P0555068	RIBBED V-BELT 200J5
69	P0555069	LOWER WHEEL COVER HINGE
70	P0555070	FLAT HD SCR M5-.8 X 10
71	P0555071	HEX BOLT M8-1.25 X 35
72	P0555072	FLAT WASHER 8MM
73	P0555073	LOCK WASHER 8MM
74	P0555074	HEX NUT M8-1.25
75	P0555075	CORD CLAMP
76	P0555076	PHLP HD SCR M5-.8 X 12
79	P0555079	GUIDE POST BRACKET
80	P0555080	THUMB SCREW M6-1 X 16
81	P0555081	GUIDE SPACING SLEEVE
82	P0555082	BALL BEARING 6000ZZ
83	P0555083	FLANGE SCREW M6-1 X 8
84	P0555084	GUIDE POST
85	P0555085	LOCK WASHER 5MM
86	P0555086	CAP SCREW M5-.8 X 40
88	P0555088	LOWER RIGHT BLADE GUARD
89	P0555089	UPPER GUIDE BRACKET
90	P0555090	UPPER RIGHT BLADE GUARD
91	P0555091	FLAT WASHER 6MM
92	P0555092	HEX BOLT M6-1 X 8
93	P0555093	LOWER GUIDE BRACKET
94	P0555094	FLAT WASHER 6MM
95	P0555095	HEX BOLT M6-1 X 20
96	P0555096	CAP SCREW M5-.8 X 12
97	P0555097	TABLE
98	P0555098	TABLE INSERT
99	P0555099	ROLL PIN 3 X 8
100	P0555100	TABLE PIN
101	P0555101	TRUNNION
102	P0555102	SCALE
103	P0555103	TRUNNION CLAMP SHOE
104	P0555104	HEX BOLT M6-1 X 12
105	P0555105	TRUNNION SUPPORT BRACKET



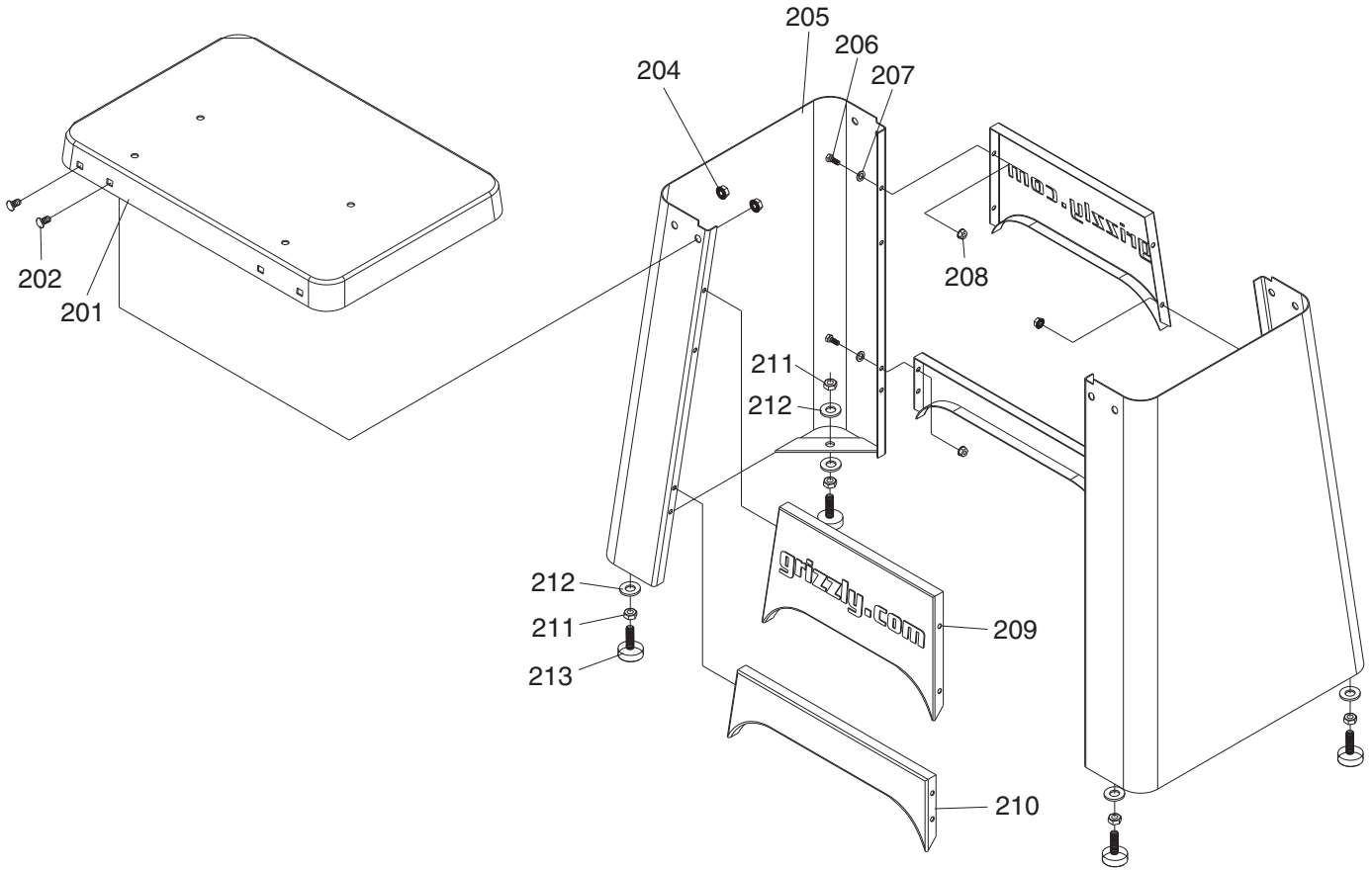
Main Parts List (Cont.)

REF	PART #	DESCRIPTION
106	P0555106	HEX BOLT M8-1.25 X 30
108	P0555108	POINTER
109	P0555109	FLANGE SCREW M5-.8 X 6
110	P0555110	KNOB M10-1.5
111	P0555111	HEX BOLT M10-1.5 X 50
112	P0555112	TRUNNION HEX BOLT M8-1.25 X 80
113	P0555113	HEX NUT M8-1.25
114	P0555114	MITER GAUGE ASSEMBLY
115	P0555115	CAP SCREW M8-1.25 X 25
116	P0555116	LOCK WASHER 8MM
117	P0555117	FLAT WASHER 8MM
118	P0555118	STEEL BALL
119	P0555119	COMPRESSION SPRING 1.5 X 5 X 9
120	P0555120	SET SCREW M10-1.5 X 10
121	P0555121	SET SCREW M8-1 X 35
122	P0555122	MICRO ADJUSTING NUT 1.65
123	P0555123	HEX BOLT M6-1 X 20
124	P0555124	CORD CLAMP
125	P0555125	PHLP HD SCR M5-.8 X 12
126	P0555126	LOCK NUT M4-.7
127	P0555127	FLAT WASHER 5MM
128	P0555128	BALL BEARING 608ZZ

REF	PART #	DESCRIPTION
129	P0555129	ECCENTRIC SHAFT
130A	P0555130A	SET SCREW M5-.8 X 8
130B	P0555130B	SET SCREW M5-.8 X 5
131A	P0555131A	UPPER LOCK COLLAR
131B	P0555131B	LOWER LOCK COLLAR
132	P0555132	FLAT WASHER 10MM
133	P0555133	QUICK RELEASE LEVER
134	P0555134	FLAT WASHER 8MM
135	P0555135	BUSHING
136	P0555136	CAP SCREW M6-1 X 16
137	P0555137	SPACER
138	P0555138	HEX BOLT M8-1.25 X 40
139	P0555139	LOCK NUT M8-1.25
140	P0555140	SUPPORT PLATE
141	P0555141	PIVOT ARM
142	P0555142	LOCK WASHER 8MM
143	P0555143	HEX BOLT M8-1.25 X 20
151	P0555151	FLAT WASHER 8MM
152	P0555152	PHLP HD SCR M5-.8 X 12
153	P0555153	EXT TOOTH WASHER 5MM
154	P0555154	SPACER 8MM



Stand

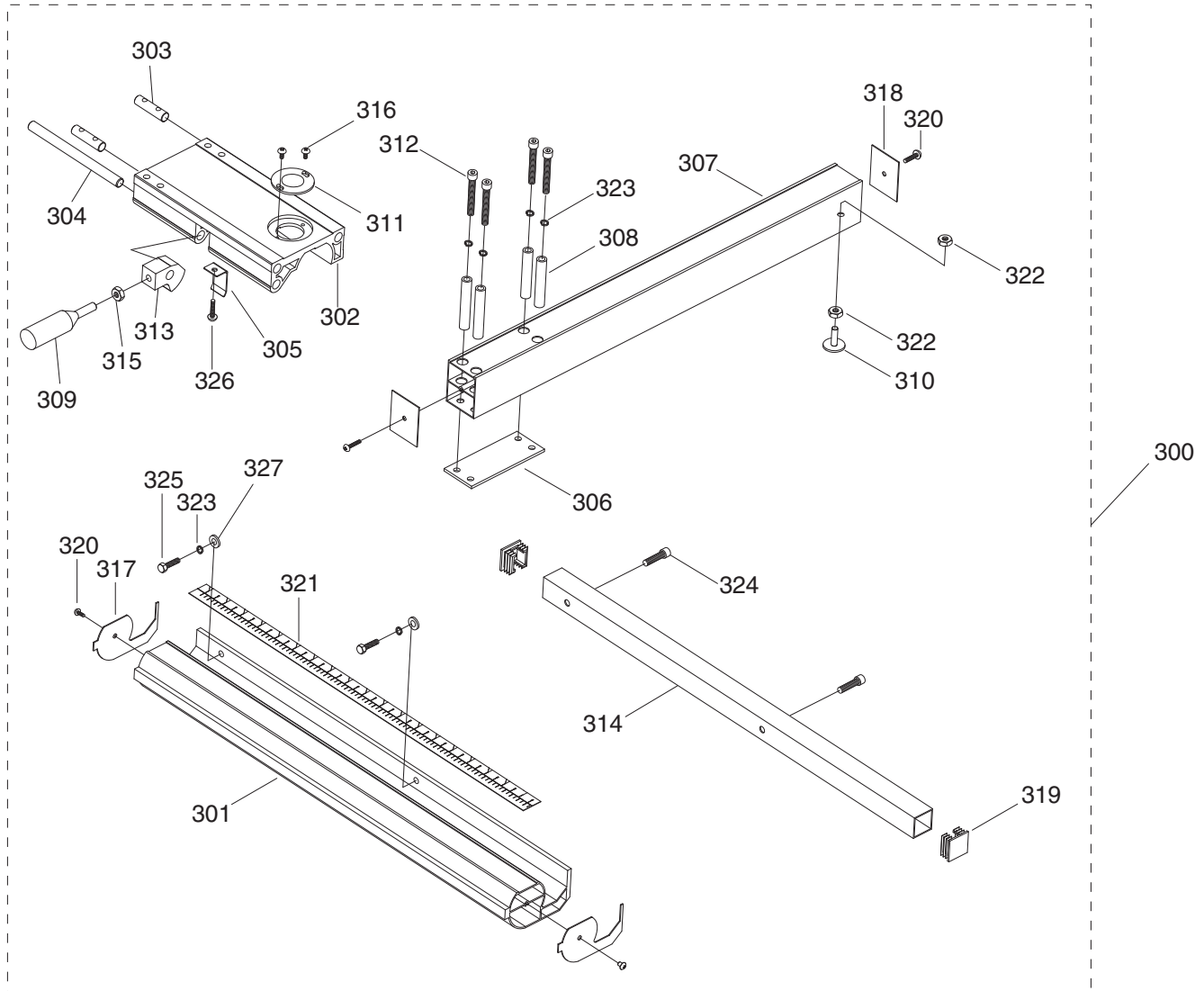


REF	PART #	DESCRIPTION
201	P0555201	STAND TOP
202	P0555202	CARRIAGE BOLT M8-1.25 X 16
204	P0555204	FLANGE NUT M8-1.25
205	P0555205	STAND SIDE
206	P0555206	HEX BOLT M6-1 X 16
207	P0555207	FLAT WASHER 6MM

REF	PART #	DESCRIPTION
208	P0555208	FLANGE NUT M6-1
209	P0555209	UPPER STAND BRACE
210	P0555210	LOWER STAND BRACE
211	P0555211	HEX NUT 3/8-16
212	P0555212	FLAT WASHER 10MM
213	P0555213	STAND FOOT



Fence



REF	PART #	DESCRIPTION
300	P0555300	FENCE KIT ASSEMBLY W/RAILS
301	P0555301	FRONT FENCE RAIL
302	P0555302	FENCE BASE
303	P0555303	FENCE MOUNT ROD
304	P0555304	LOCK SHAFT
305	P0555305	SPRING PLATE
306	P0555306	SPACER PLATE
307	P0555307	FENCE
308	P0555308	SLEEVE
309	P0555309	LOCK HANDLE
310	P0555310	FENCE STAND-OFF
311	P0555311	SCALE WINDOW
312	P0555312	CAP SCREW M6-1 X 60
313	P0555313	LOCK CAM

REF	PART #	DESCRIPTION
314	P0555314	REAR FENCE RAIL
315	P0555315	HEX NUT M6-1
316	P0555316	FLANGE SCREW M4-.7 X 6
317	P0555317	FRONT RAIL END CAP
318	P0555318	FENCE END CAP
319	P0555319	REAR RAIL END CAP
320	P0555320	TAP SCREW M3.5 X 8
321	P0555321	SCALE
322	P0555322	HEX NUT M6-1
323	P0555323	LOCK WASHER 6MM
324	P0555324	CAP SCREW M6-1 X 16
325	P0555325	HEX BOLT M6-1 X 20
326	P0555326	FLANGE SCREW M4-.7 X 8
327	P0555327	FLAT WASHER 6MM



Labels & Cosmetics

Grizzly Industrial MODEL G0555 ULTIMATE 14" BANDSAW

Specifications

Motor: 1 HP, 110V/220V, 1-Phase, 60 Hz
 Rated Voltage: 110V
 Full Load Amps: 11A (110V); 5.5A (220V)
 Table Size: 14" x 14"
 Blade Speeds: 1600, 2665 FPM
 Blade Length Range: 95-102" - 93-102"
 Blade Width Range: 1/8" - 3/4"
 Max. Cutting Width Left of Blade: 13-1/2"
 Max. Cutting Height: 6"
 Table Tilt: 15° L / 45° R
 Weight: 190 lbs.

WARNING!

To reduce risk of serious injury when using this machine:

1. Read & understand owner's manual before operating.
2. Never touch moving blade & keep hands out of blade path.
3. Always wear approved eye protection and respirator.
4. Only remove personal cutoff pieces when blade is stopped.
5. Use push stick or holding jig to cut small or narrow pieces.
6. Turn motor OFF and disconnect power before changing blades, making adjustments, or servicing.
7. Maintain adjustment of blade tension, tracking, & guides.
8. Keep upper guide adjusted to just clear the workpiece.
9. Hold workpiece firmly against table to maintain control.
10. Only run saw with wheel covers closed & all guards in place.
11. Never reach under table while blade is in motion.
12. Securely remove loose clothing and long hair.
13. DO NOT operate in rain or use in wet locations.
14. Prevent unauthorized use by children or untrained users; restrict access or disable machine when unattended.

144V2

146

G0555

148V2

NOTICE

The blade was purposely left untensioned for shipping purposes. Make sure you properly tension the blade (see manual) before starting this bandsaw!

158

145V2

WARNING!

EYE/LUNG INJURY HAZARD!
 Always wear safety glasses and a respirator when using this machine.



149

155



WARNING!

INJURY/SHOCK HAZARD!
 Disconnect power before adjustments, maintenance, or service.

147

157

156

WARNING!

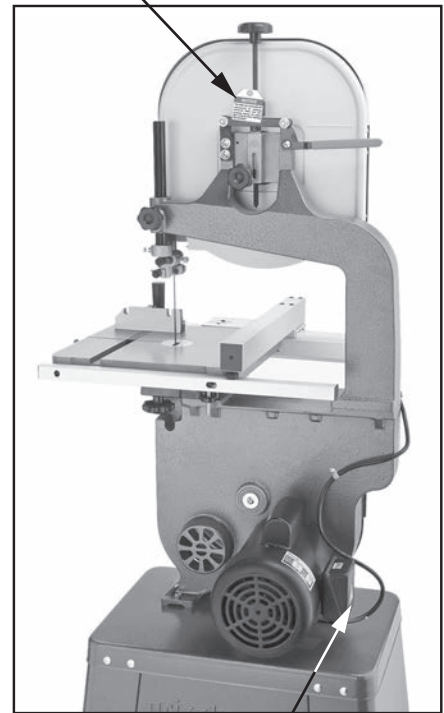
To reduce risk of death or serious injury, read manual BEFORE using machine.

To get a new manual, call (800) 523-4777 or go to www.grizzly.com.

WARNING!

INJURY HAZARD!
 Do not open door while machine is connected to power or blade is in motion.

148



149

REF	PART #	DESCRIPTION
144V2	P0555144V2	MACHINE ID LABEL V2.05.11
145V2	P0555145	GLASSES/RESPIRATOR LABEL V2.07.13
146	P0555146	MODEL NUMBER LABEL
147	P0555147	DISCONNECT POWER LABEL
148	P0555148	BANDSAW DOOR LABEL
148V2	P0555148V2	READ MANUAL LABEL

REF	PART #	DESCRIPTION
149	P0555149	ELECTRICITY LABEL
155	P0555155	GRIZZLY NAMEPLATE
156	P0555156	TOUCH-UP PAINT GRIZZLY GREEN
157	P0555157	TOUCH-UP PAINT GRIZZLY PUTTY
158	P0555158	BLADE TENSION NOTICE TAG

WARNING

Safety labels help reduce the risk of serious injury caused by machine hazards. If any label comes off or becomes unreadable, the owner of this machine **MUST** replace it in the original location before resuming operations. For replacements, contact (800) 523-4777 or www.grizzly.com.

