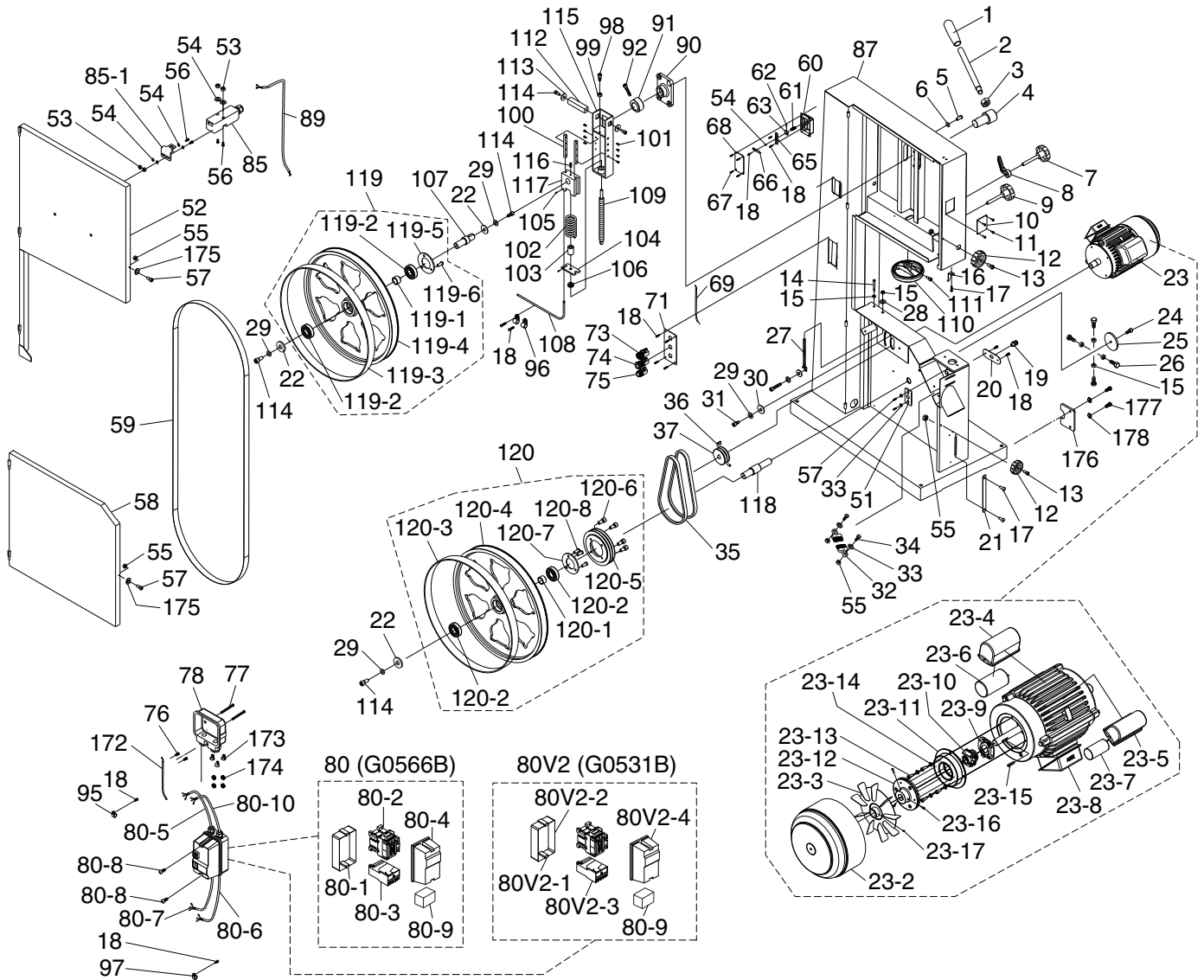


Main



Main Parts List

REF	PART #	DESCRIPTION
1	P0566B001	HANDLE SLEEVE
2	P0566B002	HANDLE SHAFT 470MM M16-2
3	P0566B003	HEX NUT M16-1.5
4	P0566B004	ECCENTRIC SHAFT
5	P0566B005	BUTTON HD CAP SCR M10-1.5 X 20
6	P0566B006	LOCK WASHER 10MM
7	P0566B007	KNOB BOLT M10-1.5 X 55, 6-LOBE, D62
8	P0566B008	LOCK LEVER M10-1.5
9	P0566B009	KNOB BOLT M10-1.5 X 55, 6-LOBE, D62
10	P0566B010	CLEAR WINDOW
11	P0566B011	RIVET 3 X 10MM NAMEPLATE, STEEL
12	P0566B012	KNOB 6MM, D60, 10-LOBE
13	P0566B013	CAP SCREW M6-1 X 20
14	P0566B014	HEX BOLT M10-1.5 X 70
15	P0566B015	HEX NUT M10-1.5
16	P0566B016	HEIGHT POINTER
17	P0566B017	FLANGE SCREW M5-.8 X 10
18	P0566B018	TAP SCREW M4 X 10
19	P0566B019	STRAIN RELIEF M20-1.5 TYPE-6 ST
20	P0566B020	STRAIN RELIEF PLATE
21	P0566B021	STEP COVER
22	P0566B022	FENDER WASHER 8MM
23	P0566B023	MOTOR 3HP 230V 1-PH W/BRAKE (G0566B)
23	P0531B023	MOTOR 5HP 230V 1-PH W/BRAKE (G0531B)
23-2	P0566B023-2	MOTOR FAN COVER (G0566B)
23-2	P0531B023-2	MOTOR FAN COVER (G0531B)
23-3	P0566B023-3	MOTOR FAN (G0566B)
23-3	P0531B023-3	MOTOR FAN (G0531B)
23-4	P0566B023-4	R CAPACITOR COVER (G0566B)
23-4	P0531B023-4	R CAPACITOR COVER (G0531B)
23-5	P0566B023-5	S CAPACITOR COVER (G0566B)
23-5	P0531B023-5	S CAPACITOR COVER (G0531B)
23-6	P0566B023-6	R CAPACITOR 40M 450V 2 X 3-7/16 (G0566B)
23-6	P0531B023-6	R CAPACITOR 45M 450V (G0531B)
23-7	P0566B023-7	S CAPACITOR 200M 250V 1-3/4 X 3-1/2 (G0566B)
23-7	P0531B023-7	S CAPACITOR 300M 250V 2 X 4 (G0531B)
23-8	P0566B023-8	JUNCTION BOX (G0566B)
23-8	P0531B023-8	JUNCTION BOX (G0531B)
23-9	P0566B023-9	CONTACT PLATE (G0566B)
23-9	P0531B023-9	CONTACT PLATE (G0531B)
23-10	P0566B023-10	CENTRIFUGAL SWITCH (G0566B)
23-10	P0531B023-10	CENTRIFUGAL SWITCH (G0531B)
23-11	P0566B023-11	MAGNETIC BRAKE (G0566B)
23-11	P0531B023-11	MAGNETIC BRAKE W/SHOE (G0531B)
23-12	P0566B023-12	BRAKE SHOE (G0566B)
23-12	P0531B023-12	BRAKE SHOE (G0531B)
23-13	P0566B023-13	CAP SCREW M6-1 X 12 (G0566B)
23-13	P0531B023-13	CAP SCREW M6-1 X 12 (G0531B)
23-14	P0566B023-14	LOCK WASHER 6MM (G0566B)
23-14	P0531B023-14	LOCK WASHER 6MM (G0531B)
23-15	P0566B023-15	KEY 5 X 5 X 25 (G0566B)
23-15	P0531B023-15	KEY 5 X 5 X 25 (G0531B)
23-16	P0566B023-16	CAP SCREW M5-.8 X 16 (G0566B)
23-16	P0531B023-16	CAP SCREW M5-.8 X 16 (G0531B)
23-17	P0566B023-17	SET SCREW M6-1 X 6 (G0566B)
23-17	P0531B023-17	SET SCREW M6-1 X 6 (G0531B)

REF	PART #	DESCRIPTION
24	P0566B024	BUTTON HD CAP SCR M8-1.25 X 25
25	P0566B025	WHEEL SHAFT COVER
26	P0566B026	HEX BOLT M10-1.5 X 35
27	P0566B027	ADJUST BOLT
28	P0566B028	FLAT WASHER 10MM
29	P0566B029	LOCK WASHER 8MM
30	P0566B030	FLAT WASHER 8MM
31	P0566B031	CAP SCREW M8-1.25 X 25
32	P0566B032	WHEEL BRUSH
33	P0566B033	FLAT WASHER 6MM
34	P0566B034	CAP SCREW M6-1 X 25
35	P0531B035	V-BELT 17-320 (G0531B)
35	P0566B035	V-BELT A30 (G0566B)
36	P0566B036	SET SCREW M6-1 X 12
37	P0566B037	MOTOR PULLEY
51	P0566B051	BRACKET
52	P0566B052	UPPER WHEEL COVER
53	P0566B053	HEX NUT M4-.7
54	P0566B054	FLAT WASHER 4MM
55	P0566B055	LOCK NUT M6-1
56	P0566B056	PHLP HD SCR M4-.7 X 10
57	P0566B057	CAP SCREW M6-1 X 10
58	P0566B058	LOWER WHEEL COVER
59	P0566B059	SAW BLADE 164" X 1" X 0.035" HOOK
60	P0566B060	UPPER WHEEL SLIDING BRACKET
61	P0566B061	COMPRESSION SPRING 1 X 8 X 40
62	P0566B062	ROLL PIN 3 X 12
63	P0566B063	SLIDING PLATE
65	P0566B065	TENSION PLATE
66	P0566B066	TENSION POINTER
67	P0566B067	TAP SCREW M4 X 16
68	P0566B068	TENSION SCALE
69	P0566B069	CONNECTING WIRE 16G
71	P0566B071	SWITCH PLATE
73	P0566B073	KEYED POWER SWITCH YK 22-1A1BG
74	P0566B074	E-STOP BUTTON 250V 10A
75	P0566B075	ON BUTTON YK 22-1A1B
76	P0566B076	PHLP HD SCR M4-.7 X 10
77	P0566B077	FLANGE SCREW M5-.8 X 50
78	P0566B078	TERMINAL BOX
80	P0566B080	MAG SWITCH SDE MPE-18 (G0566B)
80V2	P0531B080V2	MAG SWITCH SDE MPE-30 V2.08.13 (G0531B)
80-1	P0566B080-1	MAG SWITCH BACK COVER (G0566B)
80V2-1	P0531B080V2-1	MAG SWITCH BACK COVER MPE-30 (G0531B)
80-2	P0566B080-2	CONTACTOR SDE MA-18 230V (G0566B)
80V2-2	P0531B080V2-2	CONTACTOR SDE MA-30 230V (G0531B)
80-3	P0566B080-3	OL RELAY SDE RA-20 12-18A (G0566B)
80V2-3	P0531B080V2-3	RELAY SDE RA-30 18-26A (G0531B)
80-4	P0566B080-4	MAG SWITCH FRONT COVER (G0566B)
80V2-4	P0531B080V2-4	MAG SWITCH FRONT COVER MPE-30 (G0531B)
80-5	P0566B080-5	POWER CORD 12G 3W
80-6	P0566B080-6	CONTROL PANEL CORD 16G 5W
80-7	P0566B080-7	MOTOR CORD 12G 3W
80-8	P0566B080-8	FLANGE SCREW M5-.8 X 10
80-9	P0566B080-9	RECTIFIER PU-23-2
80-10	P0566B080-10	BRAKE CORD 18G 2W



Main Parts List (Cont.)

REF	PART #	DESCRIPTION
85	P0566B085	LIMIT SWITCH CANLIE AZDS11
85-1	P0566B085-1	DOOR LATCH SWITCH PLATE
87	P0566B087	MACHINE BODY
89	P0566B089	LIMIT SWITCH CORD 18G 2W 60"
90	P0566B090	HOUSING PLATE
91	P0566B091	CAM
92	P0566B092	CAP SCREW M8-1.25 X 25
95	P0566B095	CORD CLAMP 1/2"
96	P0566B096	CORD CLAMP 5/16"
97	P0566B097	CORD CLAMP 3/8"
98	P0566B098	CAP SCREW M8-1.25 X 50
99	P0566B099	HEX NUT M8-1.25
100	P0566B100	SLIDING BAR
101	P0566B101	FLAT HD SCR M5-.8 X 16
102	P0566B102	COMPRESSION SPRING
103	P0566B103	BUSHING
104	P0566B104	SPRING BASE
105	P0566B105	SET SCREW M5-.8 X 5
106	P0566B106	THRUST BEARING 51201
107	P0566B107	UPPER WHEEL SHAFT
108	P0566B108	TENSION LINE
109	P0566B109	ADJUSTING BOLT
110	P0566B110	HANDWHEEL TYPE-35 178D X 14B-S
112	P0566B112	SQUARE SHAFT
113	P0566B113	FLAT WASHER 8MM
114	P0566B114	CAP SCREW M8-1.25 X 20
115	P0566B115	UPPER WHEEL HINGE ASSY

REF	PART #	DESCRIPTION
116	P0566B116	SET SCREW M10-1.5 X 16
117	P0566B117	GUIDE BLOCK
118	P0566B118	LOWER WHEEL SHAFT
119	P0566B119	UPPER WHEEL ASSY
119-1	P0566B119-1	BUSHING
119-2	P0566B119-2	BALL BEARING 6205-2RS
119-3	P0566B119-3	WHEEL TIRE 21"
119-4	P0566B119-4	UPPER WHEEL 21"
119-5	P0566B119-5	UPPER WHEEL SHAFT PLATE
119-6	P0566B119-6	CAP SCREW M6-1 X 8
120	P0566B120	LOWER WHEEL ASSEMBLY
120-1	P0566B120-1	BUSHING
120-2	P0566B120-2	BALL BEARING 6205-2RS
120-3	P0566B120-3	WHEEL TIRE 21"
120-4	P0566B120-4	LOWER WHEEL 21"
120-5	P0566B120-5	WHEEL PULLEY
120-6	P0566B120-6	BUTTON HD CAP SCR M8-1.25 X 20
120-7	P0566B120-7	UPPER WHEEL SHAFT PLATE
120-8	P0566B120-8	CAP SCREW M6-1 X 8
172	P0566B172	CONNECTING CORD 12G 1W
173	P0566B173	WIRE NUT 14-22 AWG
174	P0566B174	EXT TOOTH WASHER 5MM
175	P0566B175	LOCK WASHER 6MM
176	P0566B176	ADJUSTMENT PLATE
177	P0566B177	CAP SCREW M5-.8 X 12
178	P0566B178	FLAT WASHER 5MM



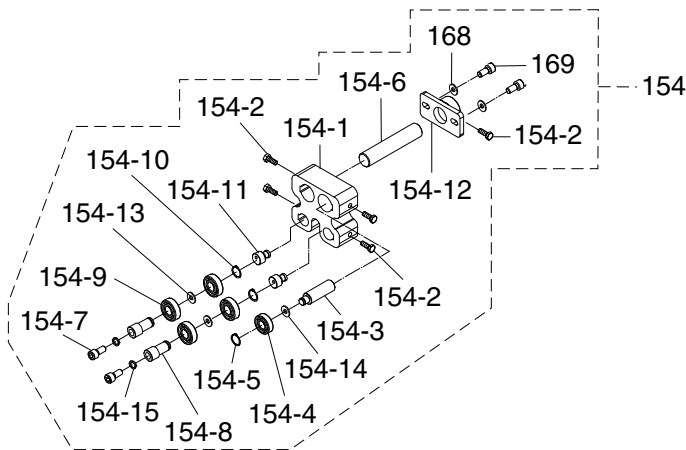
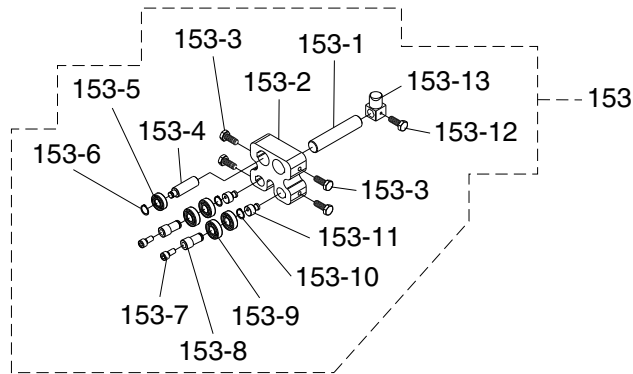
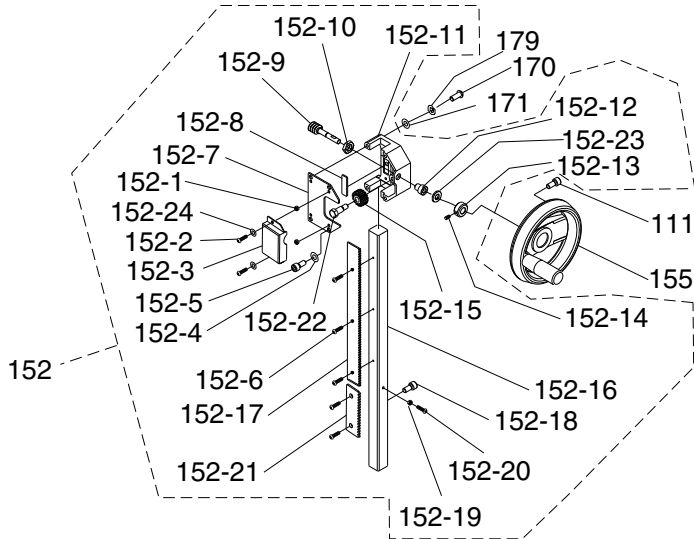
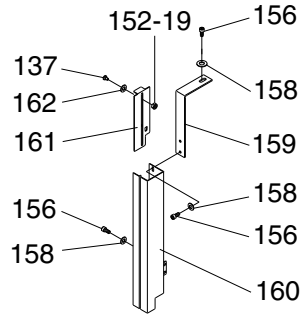
Table, Fence & Trunnion Parts List

REF	PART #	DESCRIPTION
94	P0566B094	KNOB M8-1.25 X 20
111	P0566B111	CAP SCREW M6-1 X 25
121	P0566B121	TABLE 20-3/4" X 29-1/2"
122	P0566B122	TABLE INSERT
123	P0566B123	MITER GAUGE ASSY
123-1	P0566B123-1	GUIDE BAR
123-2	P0566B123-2	T-SLOT WASHER
123-3	P0566B123-3	FLAT HD SCR M6-1 X 8
123-4	P0566B123-4	POINTER
123-5	P0566B123-5	PHLP HD SCR 10-24 X 3/8
123-6	P0566B123-6	SHOULDER SCREW
123-7	P0566B123-7	MITER GAUGE BODY
123-8	P0566B123-8	FLAT WASHER 8MM
123-9	P0566B123-9	HANDLE
123-10	P0566B123-10	LOCKING BLOCK
123-11	P0566B123-11	LOCKING SHAFT
123-12	P0566B123-12	PHLP HD SCR 10-24 X 3/8
123-13	P0566B123-13	HEX NUT M4-.7
123-14	P0566B123-14	PHLP HD SCR M4-.7 X 16
123-15	P0566B123-15	SCALE
130	P0566B130	CAP SCREW M10-1.5 X 35
131	P0566B131	LOCK WASHER 10MM
132	P0566B132	FLAT WASHER 10MM
133	P0566B133	TRUNNION BRACKET ASSEMBLY
133-1	P0566B133-1	PRESS SHAFT
133-2	P0566B133-2	MICRO ADJUSTING RING
133-3	P0566B133-3	CAP SCREW M8-1.25 X 25
133-4	P0566B133-4	LOCK WASHER 8MM
133-5	P0566B133-5	TRUNNION BLOCK
133-6	P0566B133-6	TRUNNION T-SLIDE
134	P0566B134	LOWER BLADE GUARD
135	P0566B135	OUTER RAIL PLATE
136	P0566B136	FLAT WASHER 6MM
137	P0566B137	FLANGE BOLT M6-1 X 10
138	P0566B138	HANDLE SHAFT M12-2 90MM
139	P0566B139	SHAFT KNOB
140	P0566B140	HEX NUT M12-1.75
141	P0566B141	POINTER
142	P0566B142	INNER RAIL PLATE
143	P0566B143	FENCE ASSEMBLY
143-1	P0566B143-1	FENCE
143-2	P0566B143-2	POINTER
143-3	P0566B143-3	SET SCREW M8-1.25 X 25
143-4	P0566B143-4	SPRING PLATE
143-5	P0566B143-5	FLANGE SCREW M4-.7 X 8
143-6	P0566B143-6	PIVOT BLOCK
143-7	P0566B143-7	HEX NUT M8-1.25
143-8	P0566B143-8	FENCE LOCK HANDLE
143-9	P0566B143-9	SHAFT

REF	PART #	DESCRIPTION
143-10	P0566B143-10	SET SCREW M7-1 X 10, PLASTIC
143-11	P0566B143-11	NYLON PAD
143-12	P0566B143-12	SET SCREW M8-1.25 X 12
143-13	P0566B143-13	HEX NUT M8-1.25
143-14	P0566B143-14	HEX BOLT M8-1.25 X 20
143-15	P0566B143-15	HEX NUT M8-1.25
143-16	P0566B143-16	FLAT WASHER 8MM
143-17	P0566B143-17	LOCK HANDLE M8-1.25 X 45
143-18	P0566B143-18	SLIDE PLATE
144	P0566B144	RESAW FENCE ASSEMBLY
144-1	P0566B144-1	RESAW FENCE 590MM, ALUMINUM
144-2	P0566B144-2	TAP SCREW M3.5 X 12
144-3	P0566B144-3	FENCE END PLATE 148 X 22 X 1
145	P0566B145	LOCK WASHER 6MM
146	P0566B146	CAP SCREW M6-1 X 20
147	P0566B147	GUARD RAIL
148	P0566B148	FLAT WASHER 8MM
149	P0566B149	LOCK WASHER 8MM
150	P0566B150	CAP SCREW M8-1.25 X 20
151	P0566B151	TABLE TILT ASSEMBLY
151-1	P0566B151-1	WORM SHAFT
151-2	P0566B151-2	HEX NUT M16-1.5
151-3	P0566B151-3	BUSHING
151-4	P0566B151-4	LOCK COLLAR 22 X 10 X 10MM
151-5	P0566B151-5	SET SCREW M5-.8 X 5
151-7	P0566B151-7	CAP SCREW M8-1.25 X 16
151-8	P0566B151-8	PHLP HD SCR M5-.8 X 10
151-9	P0566B151-9	OUTER GUIDE BRACKET COVER
151-10	P0566B151-10	LOWER GUIDE BRACKET COVER
151-11	P0566B151-11	PINION GEAR BOLT
151-12	P0566B151-12	PINION GEAR 15T
151-13	P0566B151-13	FLAT HD SCR M4-.7 X 10
151-14	P0566B151-14	LOWER GUIDE RACK
151-15	P0566B151-15	SQUARE TUBE
151-16	P0566B151-16	GUIDE BRACKET
151-17	P0566B151-17	PHLP HD SCR M4-.7 X 10
151-18	P0566B151-18	ALIGNMENT PLATE
151-19	P0566B151-19	FLAT WASHER 16MM, FIBER
151-20	P0566B151-20	HEX NUT M5-.8
151-21	P0566B151-21	FLAT WASHER 5MM
151-22	P0566B151-22	LOCK WASHER 8MM
155	P0566B155	HANDWHEEL
156	P0566B156	CAP SCREW M6-1 X 10
158	P0566B158	FLAT WASHER 6MM
163	P0566B163	HEX BOLT M8-1.25 X 55
164	P0566B164	SLIDING PLATE
165	P0566B165	LOCK NUT M8-1.25
166	P0566B166	CAP SCREW M8-1.25 X 20
167	P0566B167	SUPPORT BRACKET



Guides



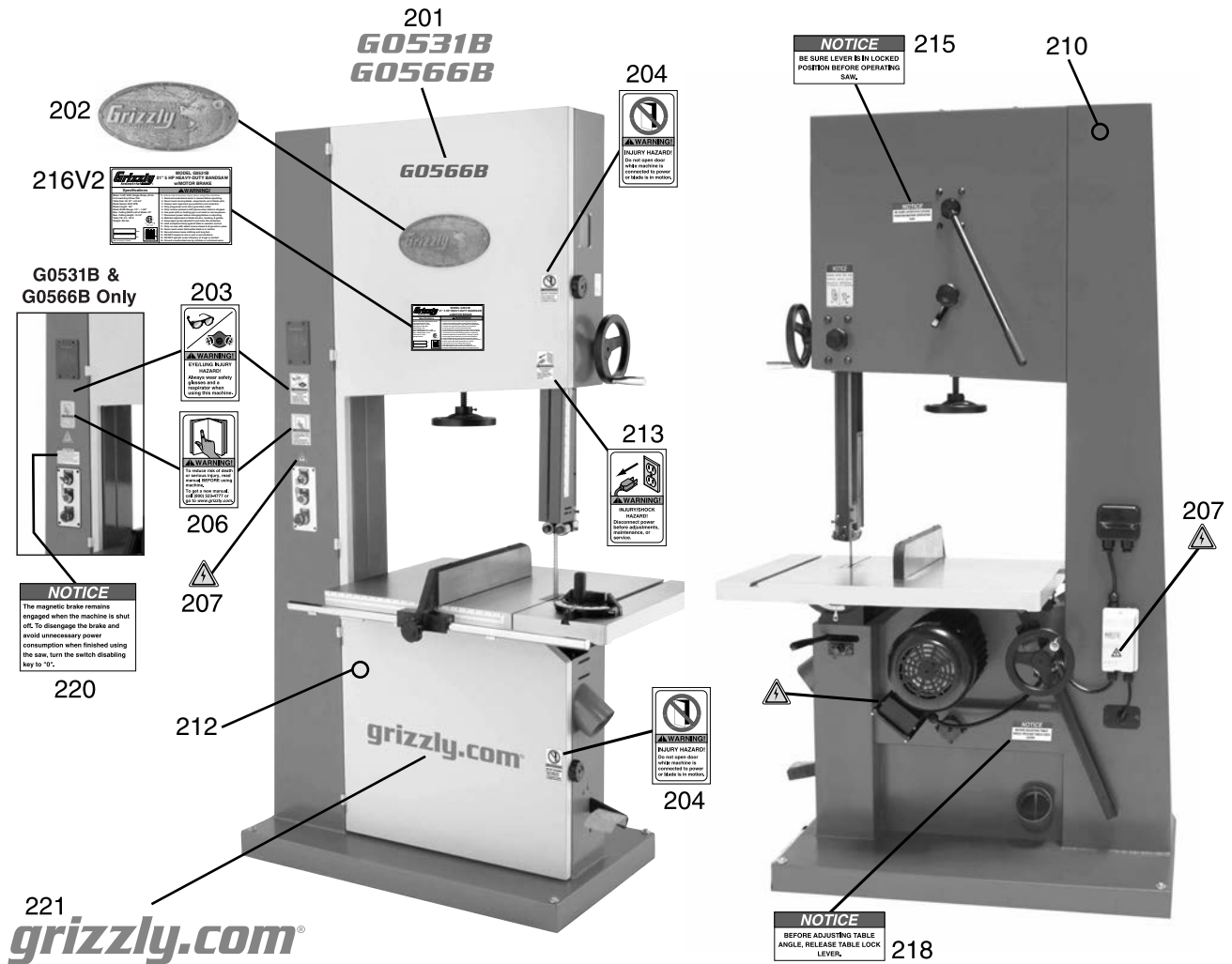
Guides Parts List

REF	PART #	DESCRIPTION
111	P0566B111	CAP SCREW M6-1 X 25
137	P0566B137	FLANGE BOLT M6-1 X 10
152	P0566B152	UPPER GUIDE ASSEMBLY
152-1	P0566B152-1	HEX NUT M5-.8
152-2	P0566B152-2	PHLP HD SCR M5-.8 X 10
152-3	P0566B152-3	GUIDE BRACKET COVER
152-4	P0566B152-4	LOCK WASHER 8MM
152-5	P0566B152-5	CAP SCREW M8-1.25 X 16
152-6	P0566B152-6	FLAT HD SCR M4-.7 X 10
152-7	P0566B152-7	UPPER GUIDE BRACKET COVER
152-8	P0566B152-8	ALIGNMENT PLATE
152-9	P0566B152-9	WORM SHAFT
152-10	P0566B152-10	HEX NUT M16-1.5
152-11	P0566B152-11	GUIDE BRACKET
152-12	P0566B152-12	BUSHING
152-13	P0566B152-13	LOCK COLLAR
152-14	P0566B152-14	SET SCREW M5-.8 X 5
152-15	P0566B152-15	PINION GEAR
152-16	P0566B152-16	UPPER GUIDE SUPPORT BLOCK
152-17	P0566B152-17	UPPER GUIDE RACK
152-18	P0566B152-18	CAP SCREW M6-1 X 16
152-19	P0566B152-19	HEX NUT M4-.7
152-20	P0566B152-20	PHLP HD SCR M4-.7 X 10
152-21	P0566B152-21	EXTENSION RACK
152-22	P0566B152-22	STEP BOLT M10-1.5 X 12 X 43
152-23	P0566B152-23	FLAT WASHER 16MM, FIBER
152-24	P0566B152-24	FLAT WASHER 5MM
153	P0566B153	UPPER BLADE GUIDE ASSEMBLY
153-1	P0566B153-1	ADJUSTMENT ROD
153-2	P0566B153-2	BLADE GUIDE SUPPORT
153-3	P0566B153-3	HEX BOLT M6-1 X 16
153-4	P0566B153-4	SPACING SLEEVE
153-5	P0566B153-5	BALL BEARING 6201ZZ
153-6	P0566B153-6	EXT RETAINING RING 12MM

REF	PART #	DESCRIPTION
153-7	P0566B153-7	CAP SCREW M6-1 X 40
153-8	P0566B153-8	PIVOT SLEEVE
153-9	P0566B153-9	BALL BEARING 6202ZZ
153-10	P0566B153-10	EXT RETAINING RING 15MM
153-11	P0566B153-11	ECCENTRIC SHAFT
153-12	P0566B153-12	HEX BOLT M6-1 X 16
153-13	P0566B153-13	UPPER GUIDE SUPPORT BLOCK
154	P0566B154	LOWER BLADE GUIDE ASSEMBLY
154-1	P0566B154-1	BLADE GUIDE SUPPORT
154-2	P0566B154-2	CAP SCREW M6-1 X 16
154-3	P0566B154-3	SPACING SLEEVE
154-4	P0566B154-4	BALL BEARING 6201ZZ
154-5	P0566B154-5	EXT RETAINING RING 12MM
154-6	P0566B154-6	ADJUSTMENT ROD
154-7	P0566B154-7	HEX BOLT M6-1 X 40
154-8	P0566B154-8	PIVOT SLEEVE
154-9	P0566B154-9	BALL BEARING 6202ZZ
154-10	P0566B154-10	EXT RETAINING RING 15MM
154-11	P0566B154-11	ECCENTRIC SHAFT
154-12	P0566B154-12	SUPPORT BRACKET
154-13	P0566B154-13	SPACER
154-14	P0566B154-14	SPACER
154-15	P0566B154-15	LOCK WASHER 6MM
155	P0566B155	HANDWHEEL
156	P0566B156	CAP SCREW M6-1 X 10
158	P0566B158	FLAT WASHER 6MM
159	P0566B159	SUPPORT PLATE
160	P0566B160	UPPER BLADE GUARD
161	P0566B161	SLIDING PLATE
162	P0566B162	FLAT WASHER 6MM, FIBER
170	P0566B170	CAP SCREW M8-1.25 X 30
171	P0566B171	FLAT WASHER 8MM
179	P0566B179	LOCK WASHER 8MM



Labels & Cosmetics



REF	PART #	DESCRIPTION
201	P0531B201	MODEL NUMBER LABEL (G0531B)
201	P0566B201	MODEL NUMBER LABEL (G0566B)
202	P0566B202	GRIZZLY LOGO PLATE
203	P0566B203	GLASSES/RESPIRATOR LABEL
204	P0566B204	DOOR CLOSED LABEL
206	P0566B206	READ MANUAL LABEL
207	P0566B207	ELECTRICITY LABEL
210	P0566B210	TOUCH-UP PAINT, GRIZZLY GREEN

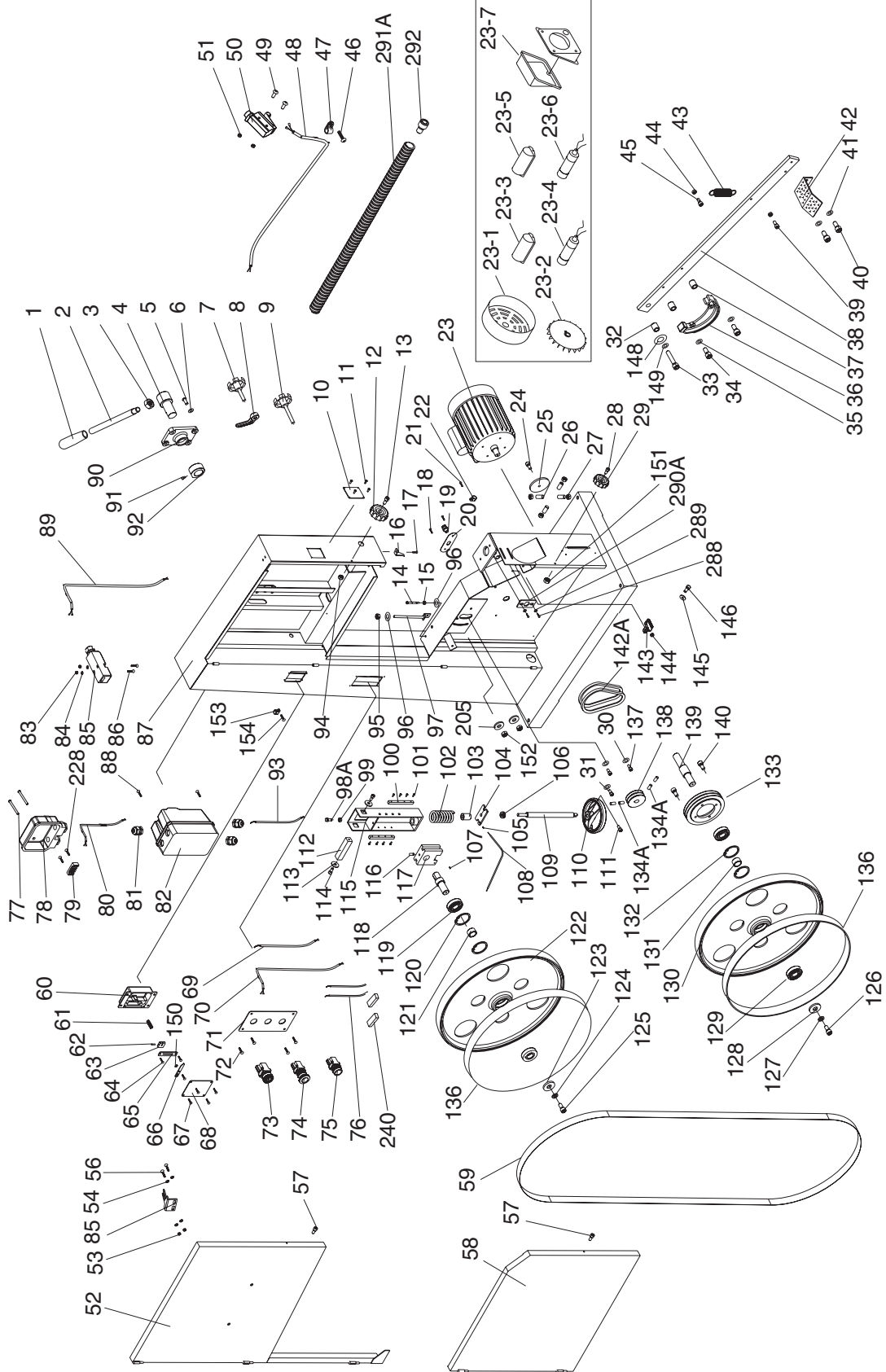
REF	PART #	DESCRIPTION
212	P0566B212	TOUCH-UP PAINT, GREY PUTTY
213	P0566B213	DISCONNECT POWER LABEL
215	P0566B215	TENSION ADJ LABEL
216V2	P0531B216V2	MACHINE ID LABEL V2.09.18 (G0531B)
216V2	P0566B216V2	MACHINE ID LABEL V2.09.18 (G0566B)
218	P0566B218	TABLE LOCK LABEL
220	P0566B220	MAGNETIC BRAKE NOTICE
221	P0566B221	GRIZZLY.COM LABEL

WARNING

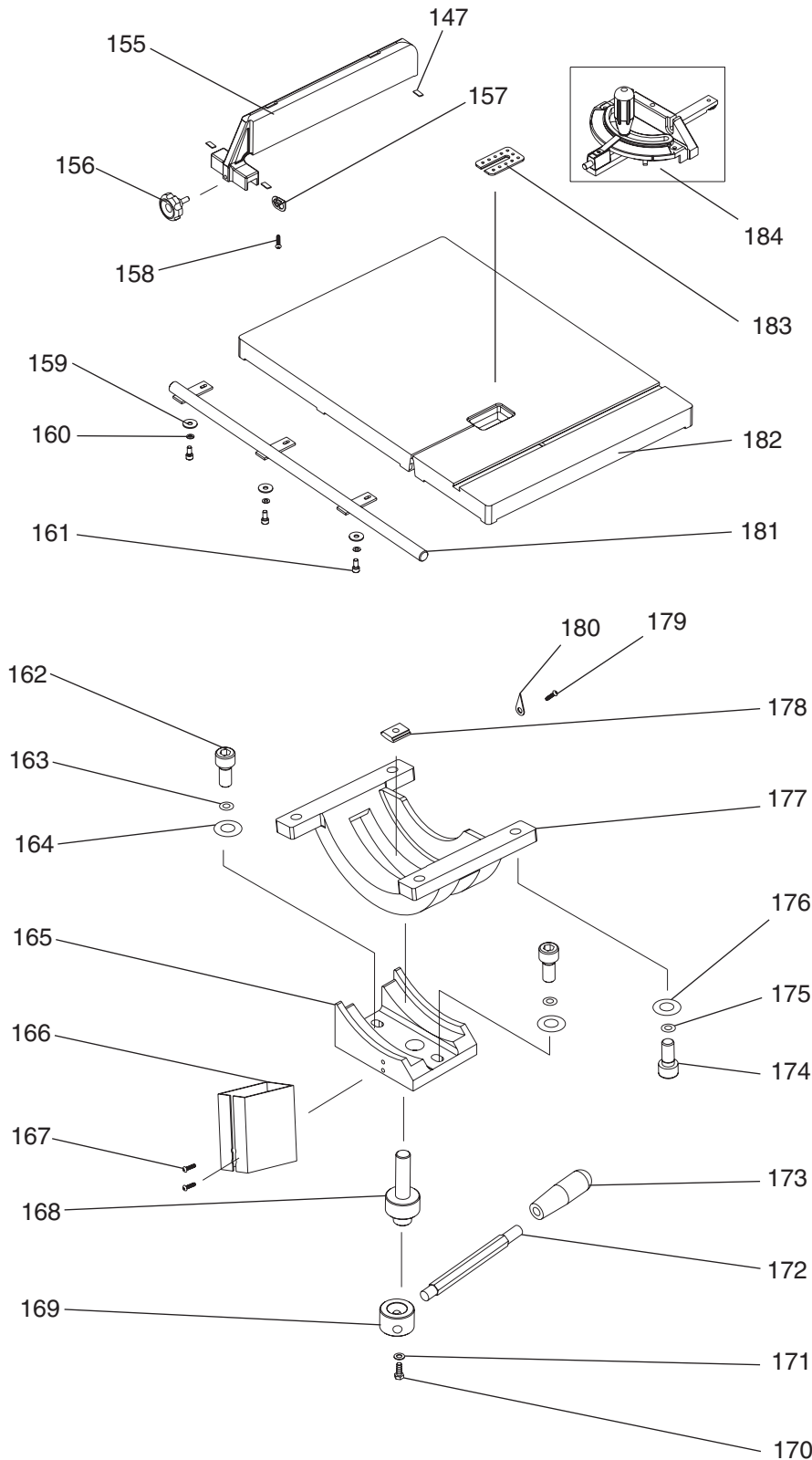
Safety labels help reduce the risk of serious injury caused by machine hazards. If any label comes off or becomes unreadable, the owner of this machine **MUST** replace it in the original location before resuming operations. For replacements, contact (800) 523-4777 or www.grizzly.com.



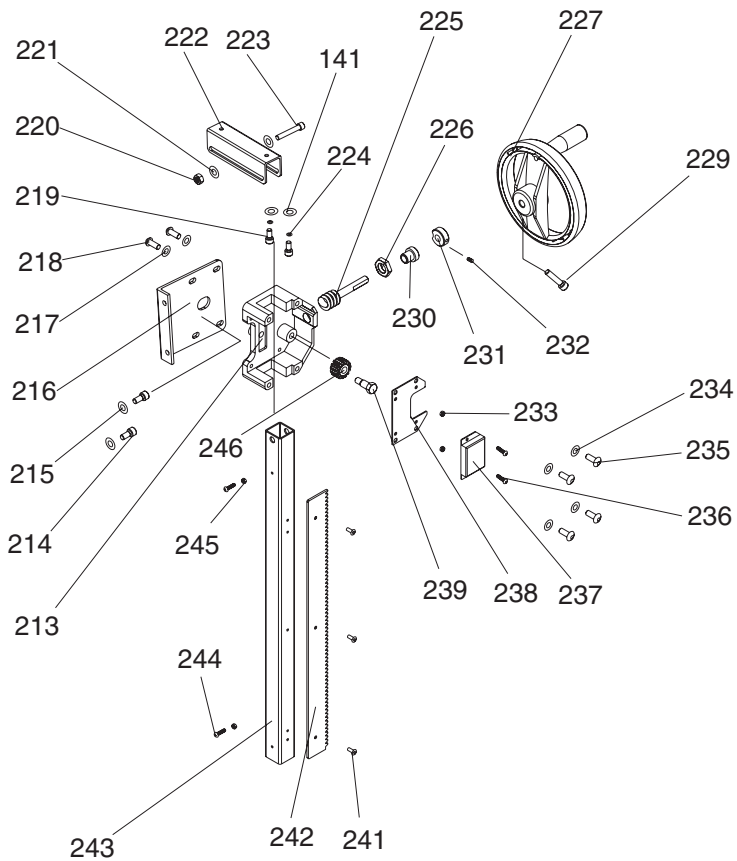
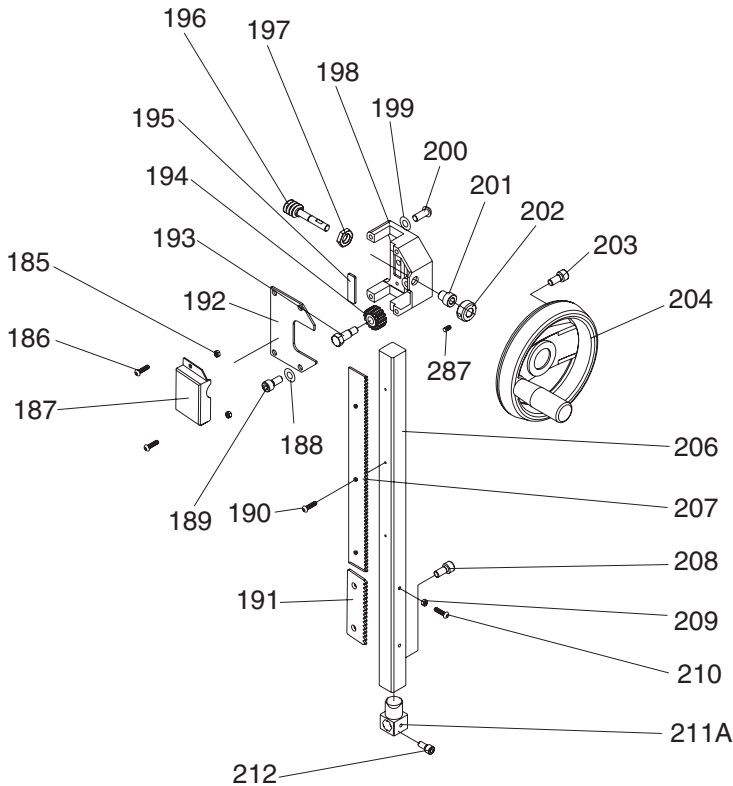
G0566 Parts Breakdown



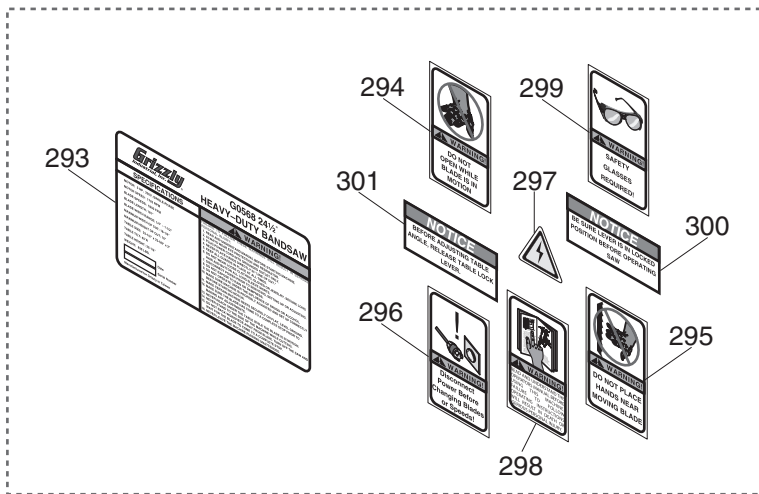
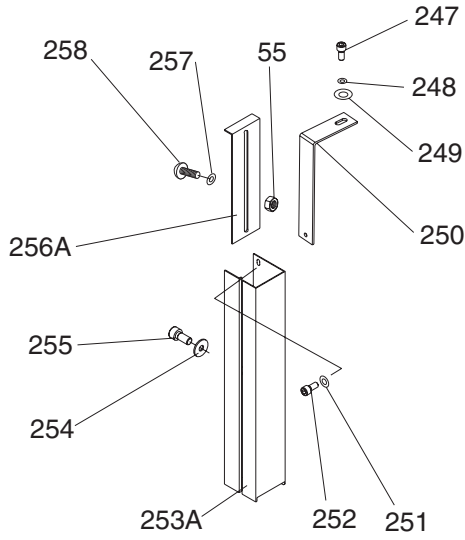
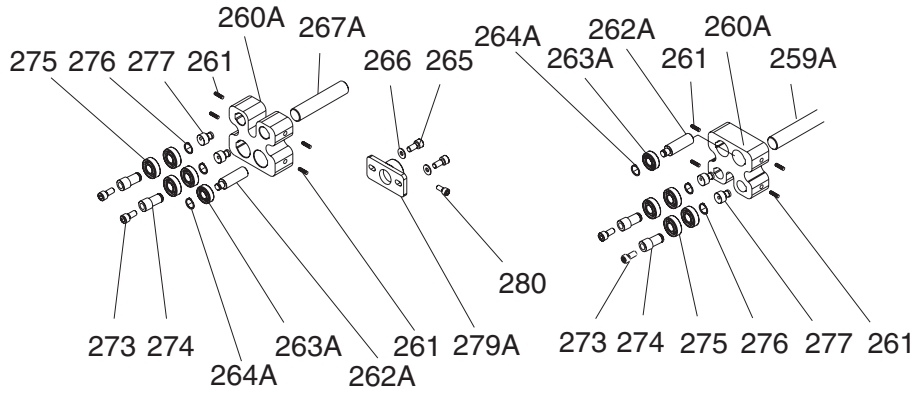
G0566 Parts Breakdown



G0566 Parts Breakdown



G0566 Parts Breakdown



G0566 Parts List

REF	PART #	DESCRIPTION
1	P0566001	HANDLE KNOB M16-1.5
2	P0566002	HANDLE SHAFT
3	PN05M	NUT M16-1.5
4	P0566004	ECCENTRIC SHAFT
5	PSBS03M	BUTTON HD CAP SCR M10-1.5 X 20
6	PLW06M	LOCK WASHER 10MM
7	P0566007	KNOB SCREW M10-1.5 X 25
8	P0566008	LOCK HANDLE M10-1.5
9	P0566009	KNOB SCREW M10-1.5 X 25
10	P0566010	TRANSLUCENT PIECE
11	P0566011	RIVET 3.2 X 10
12	P0566012	LATCHING KNOB 6MM
13	PSB02M	CAP SCREW M6-1 X 20
14	PB73M	HEX BOLT M10-1.5 X 50
15	PN02M	HEX NUT M10-1.5
16	P0566016	HEIGHT POINTER
17	PFS07M	FLANGE SCREW M5-.8 X 10
18	PHTEK4M	TAP SCREW M4 X 8
19	P0566019	STRAIN RELIEF M20
20	P0566020	PLATE
21	PHTEK4M	TAP SCREW M4 X 8
22	P0566022	CORD CLAMP 1/2"
23	P0566023	MOTOR 3HP 220V 1PHASE
23-1	P0566023-1	FAN COVER
23-2	P0566023-2	FAN
23-3	P0566023-3	CAPACITOR COVER
23-4	P0566023-4	START CAPACITOR 250MFD/250V
23-5	P0566023-5	CAPACITOR COVER
23-6	PC20A	CAPACITOR 20MFD/400V
23-7	P0566023-7	WIRING BOX
24	PSBS01M	BUTTON HD CAP SCR M8-1.25 X 20
25	P0566025	COVER
26	PB01M	HEX BOLT M10-1.5 X 30
27	PN02M	HEX NUT M10-1.5
28	PSB02M	CAP SCREW M6-1 X 20
29	P0566029	LATCHING KNOB 6MM
30	PW01M	FLAT WASHER 8MM
31	PSB31M	CAP SCREW M8-1.25 X 25
32	P0566032	BUSHING

REF	PART #	DESCRIPTION
33	PSB31M	CAP SCREW M8-1.25 X 25
34	PSB06M	CAP SCREW M6-1 X 25
35	PLW03M	LOCK WASHER 6MM
36	P0566036	BRAKE PAD
37	P0566037	BUSHING
38	P0566038	BRAKE LEVER
39	PSB01M	CAP SCREW M6-1 X 16
40	PSB01M	CAP SCREW M6-1 X 16
41	PLW03M	LOCK WASHER 6MM
42	P0566042	BRAKE STEP PLATE
43	P0566043	SPRING
44	PN01M	HEX NUT M6-1
45	PSB01M	CAP SCREW M6-1 X 16
46	PHTEK4M	TAP SCREW M4 X 8
47	P0566047	CORD CLAMP 5/8"
48	P0566048	STEP CORD
49	PB41M	HEX BOLT M4-.7 X 30
50	P0566050	LIMIT SWITCH KL7141
51	PN04M	HEX NUT M4-.7
52	P0566052	UPPER WHEEL COVER
53	PN04M	HEX NUT M4-.7
54	PW05M	FLAT WASHER 4MM
55	PLN03M	LOCK NUT M6-1
56	PS38M	PHLP HD SCR M4-.7 X 10
57	PSB04M	CAP SCREW M6-1 X 10
58	P0566058	LOWER WHEEL COVER
59	P0566059	SAW BLADE 4190X25.4X0.9mm
60	P0566060	UPPER WHEEL SLIDING BRACKET
61	P0566061	SPRING
62	PRP61M	PIN 3 X 12
63	P0566063	MOVING PLATE
64	PHTEK15M	TAP SCREW M4 X 10
65	P0566065	FIX PLATE
66	P0566066	TENSION POINTER
67	PHTEK6M	TAP SCREW M4 X 16
68	P0566068	TENSION SCALE
69	P0566069	CONNECTING CORD
70	P0566070	SWITCH CORD
71	P0566071	SWITCH PLATE

G0566 Parts List

REF	PART #	DESCRIPTION
72	PHTEK15M	TAP SCREW M4 X 10
73	P0566073	KEY SWITCH Ø22
74	P0566074	STOP SWITCH Ø22
75	P0566075	START SWITCH Ø22
76	P0566076	CONNECTING CORD
77	PFS09M	FLANGE SCREW M5-.8 X 50
78	P0566078	TERMINAL BOX
79	P0566079	TERMINAL HOUSE
80	P0566080	POWER CORD
81	P0566081	STRAIN RELIEF M20
82	P0566082	MAGNETIC SWITCH MPE-18 22A
83	PN04M	HEX NUT M4-.7
84	PW05M	FLAT WASHER 4MM
85	P0566085	DOOR LATCH SWITCH ADZ-S11
86	PFS10M	FLANGE SCREW M4-.7 X 35
87	P0566087	MACHINE BODY
88	PFS07M	FLANGE SCREW M5-.8 X 10
89	P0566089	SWITCH CORD
90	P0566090	HOUSING PLATE
91	PSB31M	CAP SCREW M8-1.25 X 25
92	P0566092	CAM
93	P0566093	MOTOR CORD
94	PLN03M	LOCK NUT M6-1
95	PN02M	HEX NUT M10-1.5
96	PW04M	FLAT WASHER 10MM
97	P0566097	ADJUST BOLT
98A	PSB60M	CAP SCREW M8-1.25 X 55
99	PN03M	HEX NUT M8-1.25
100	P0566100	LOCATE PLATE
101	PFH39M	FLAT HD SCR M5-.8 X 16
102	P0566102	SPRING
103	P0566103	BUSHING
104	P0566104	PRESS BLOCK
105	PSS07M	SET SCREW M5-.8 X 5
106	P0566106	BEARING 51201
107	PSS07M	SET SCREW M5-.8 X 5
108	P0566108	TENSION LINE
109	P0566109	SHAFT

REF	PART #	DESCRIPTION
110	P0566110	HANDWHEEL
111	PSB06M	CAP SCREW M6-1 X 25
112	P0566112	SQUARE SHAFT
113	PW01M	FLAT WASHER 8MM
114	PSB14M	CAP SCREW M8-1 X 20
115	P0566115	UPPER WHEEL HINGE ASSY
116	PSS75M	SET SCREW M10-1.5 X 16
117	P0566117	GUIDE BLOCK
118	P0566118	UPPER WHEEL SHAFT
119	P6205	BALL BEARING 6205LLU
120	PR26M	INT RETAINING RING 52MM
121	P0566121	BUSHING
122	P0566122	UPPER WHEEL Ø21"
123	PW01M	FLAT WASHER 8MM
124	PLW04M	LOCK WASHER 8MM
125	PSB14M	CAP SCREW M8-1 X 20
126	PSB14M	CAP SCREW M8-1 X 20
127	PLW04M	LOCK WASHER 8MM
128	PW01M	FLAT WASHER 8MM
129	P6205	BALL BEARING 6205LLU
130	P0566130	LOWER WHEEL Ø21"
131	P0566131	BUSHING
132	PR26M	INT RETAINING RING 52MM
133	P0566133	PULLEY
134A	PSS04M	SET SCREW M6-1 X 12
136	P0566136	TIRE
137	PSB14M	CAP SCREW M8-1.25 X 20
138	P0566138	PULLEY
139	P0566139	LOWER SHAFT
140	PSBS01M	BUTTN HD CAP SCR M8-1.25 X 20
141	PW03M	FLAT WASHER 6MM
142A	PVA30	V-BELT A-30 4L300
143	P0566143	BRUSH
144	PLN03M	LOCK NUT M6-1
145	PW03M	FLAT WASHER 6MM
146	PSB02M	CAP SCREW M6-1 X 20
147	P0566147	NYLON PIECE
148	PW01M	FLAT WASHER 8MM

G0566 Parts List

REF	PART #	DESCRIPTION
149	PLW04M	LOCK WASHER 8MM
150	PW05M	FLAT WASHER 4MM
151	PLN03M	LOCK NUT M6-1
152	PN03M	HEX NUT M8-1.25
153	P0566153	CORD CLAMP 5/16"
154	PHTEK15M	TAP SCREW M4 X 10
155	P0566155	FENCE
156	P0566156	KNOB SCREW M10-1.5 X 25
157	P0566157	POINTER
158	PFS01M	FLANGE SCREW M5-.8 X 8
159	PW01M	FLAT WASHER 8MM
160	PLW04M	LOCK WASHER 8MM
161	PB09M	HEX BOLT M8-1.25 X 20
162	PSB72M	CAP SCREW M10-1.5 X 30
163	PLW06M	LOCK WASHER 10MM
164	PW04M	FLAT WASHER 10MM
165	P0566165	TRUNNION HOUSING
166	P0566166	BLADE GUARD
167	PFS11M	FLANGE SCREW M6 X 10
168	P0566168	PRESS SHAFT
169	P0566169	MICRO ADJUSTING RING
170	PSB14M	CAP SCREW M8-1.25 X 20
171	PLW04M	LOCK WASHER 8MM
172	P0566172	HANDLE SHAFT
173	P0566173	HANDLE KNOB M12-1.75 (FEMALE)
174	PSB84M	CAP SCREW M10-1.5 X 35
175	PLW06M	LOCK WASHER 10MM
176	PW04M	FLAT WASHER 10MM
177	P0566177	TRUNNION BLOCK
178	P0566178	PRESS BLOCK
179	PS38M	PHLP HD SCR M4-.7 X 10
180	P0566180	POINTER
181	P0566181	GUARD RAIL
182	P0566182	TABLE
183	P0566183	TABLE INSERT
184	P0566184	MITER GAUGE ASSY
184-1	P0566184-1	GUIDE
184-2	P0566184-2	GUIDE BAR
184-3	P0566184-3	LOCATE BRACKET

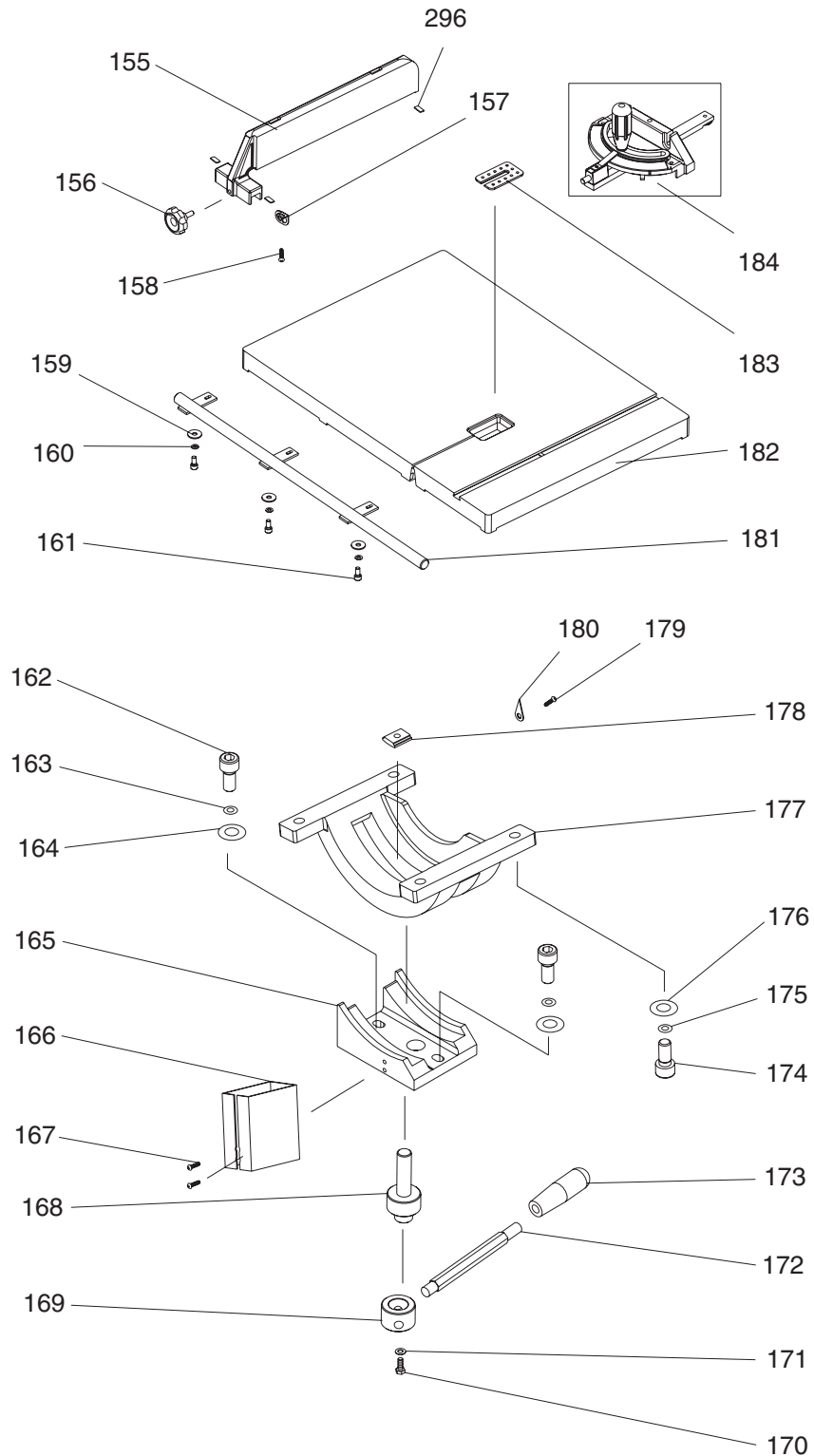
REF	PART #	DESCRIPTION
184-4	P0566184-4	LOCATE SHAFT
184-5	P0566184-5	POINTER
184-6	P0566184-6	STEP SCREW
184-7	P0566184-7	HANDLE
184-8	P0566184-8	MITER GAUGE BODY
184-9	PFH9M	FLAT HEAD SCR M6-1 X 8
184-10	PS06	PHLP HD SCR 10-24 X 3/8
184-11	PS56M	PHLP HD SCR M4-.7 X 16
184-12	PN04M	HEX NUT M4-.7
184-13	PW01M	FLAT WASHER 8MM
185	PN06M	HEX NUT M5-.8
186	PFS07M	FLANGE SCREW M5-.8 X 10
187	P0566187	COVER
188	PLW04M	LOCK WASHER 8MM
189	PSB11M	CAP SCREW M8-1.25 X 16
190	PFH19M	FLAT HD SCR M4-.7 X 10
191	P0566191	EXTENSION RACK
192	P0566192	COVER
193	P0566193	FIXED BOLT
194	P0566194	PINION GEAR
195	P0566195	FIXED PLATE
196	P0566196	WORM CYLINDER
197	PN05M	HEX NUT M16-1.5
198	P0566198	GUIDE BRACKET
199	PW01M	FLAT WASHER 8MM
200	PSBS04M	BUTTON HD CAP SCR M8-1.25 X 35
201	P0566201	BUSHING
202	P0566202	SWITCH BUSHING
203	PSB06M	CAP SCREW M6-1 X 25
204	P0566204	HANDWHEEL
205	PW01M	FLAT WASHER 8MM
206	P0566206	UPPER GUIDE BAR
207	P0566207	RACK
208	PSB01M	CAP SCREW M6-1 X 16
209	PN04M	HEX NUT M4-.7
210	PS38M	PHLP HD SCR M4-.7 X 10
211A	P0566211A	UPPER GUIDE SUPPORT BLOCK
212	PB83M	HEX BOLT M6-1 X 16
213	P0566213	GUIDE BRACKET

G0566 Parts List

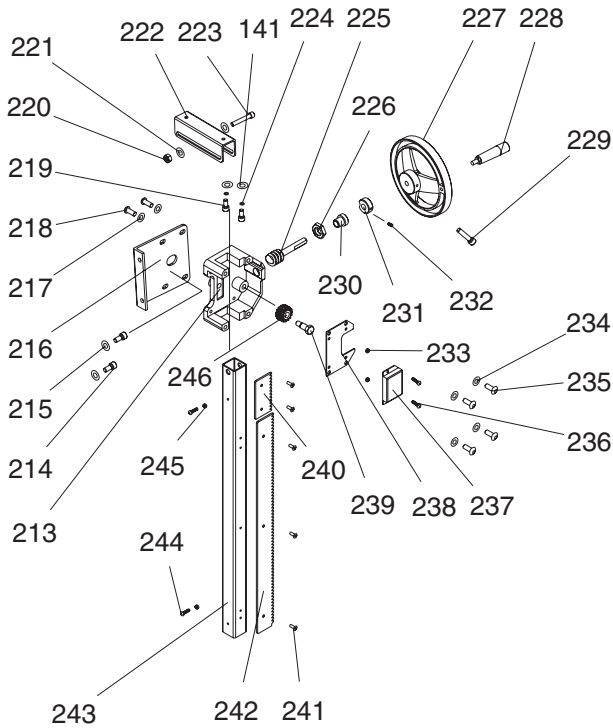
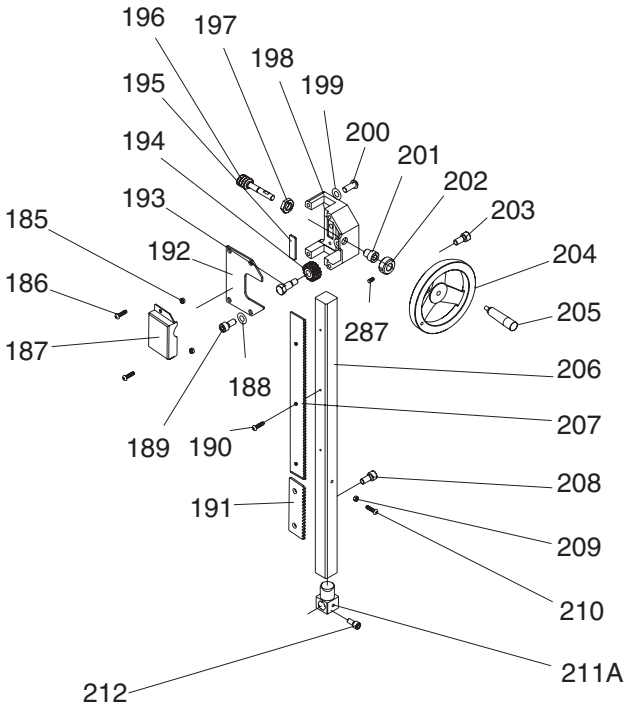
REF	PART #	DESCRIPTION
214	PSB14M	CAP SCREW M8-1.25 X 20
215	PLW04M	LOCK WASHER 8MM
216	P0566216	SUPPORT PLATE
217	PW01M	FLAT WASHER 8MM
218	PSBS01M	BUTTON HD CAP SCR M8-1.25 X 20
219	PSB04M	CAP SCREW M6-1 X 10
220	PLN04M	LOCK NUT M8-1.25
221	PW01M	FLAT WASHER 8MM
222	P0566222	SLIDING PLATE
223	PB30M	HEX BOLT M8-1.25 X 55
224	PLW03M	LOCK WASHER 6MM
225	P0566225	WORM CYLINDER
226	PN05M	HEX NUT M16-1.5
227	P0566227	HANDWHEEL
228	PS52M	PHLP HD SCR M4-.7 X 20
229	PSB06M	CAP SCREW M6-1 X 25
230	P0566230	BUSHING
231	P0566231	SWITCH BUSHING
232	PSS07M	SET SCREW M5-.8 X 5
233	PN06M	HEX NUT M5-.8
234	PLW04M	LOCK WASHER 8MM
235	PSB11M	CAP SCREW M8-1.25 X 16
236	PFS07M	FLANGE SCREW M5-.8 X 10
237	P0566237	COVER
238	P0566238	COVER
239	P0566239	SPECIAL BOLT
240	P0566240	CORD CONNECTOR 224-201
241	PFH19M	FLAT HD SCR M4-.7 X 10
242	P0566242	RACK
243	P0566243	SQUARE TUBE
244	PFS05M	FLANGE SCREW M4-.7 X 10
245	PN04M	HEX NUT M4-.7
246	P0566246	PINION GEAR
247	PSB04M	CAP SCREW M6-1 X 10
248	PLW03M	LOCK WASHER 6MM
249	PW03M	FLAT WASHER 6MM
250	P0566250	SUPPORT PLATE
251	PW03M	FLAT WASHER 6MM
252	PSB04M	CAP SCREW M6-1 X 10

REF	PART #	DESCRIPTION
253A	P0566253A	PROTECT COVER ASSY
254	PW03M	FLAT WASHER 6MM
255	PSB04M	CAP SCREW M6-.1 X 10
256A	P0566256A	SLIDING PLATE
257	P0566257	PLASTIC WASHER 6MM
258	PFS11M	FLANGE SCREW M6-1 X 10
259A	P0566259A	ADJUST BAR
260A	P0566260A	BLADE GUIDE SUPPORT
261	PB83M	HEX BOLT M6-1 X 16
262A	P0566262A	UPPER SPACING SLEEVE
263A	P6201	BALL BEARING 6201ZZ
264A	PR03M	EXT RETAINING RING 12MM
265	PSB01M	CAP SCREW M6-1 X 16
266	PW03M	FLAT WASHER 6MM
267A	P0566267A	ADJUSTING SHAFT
273	PCAP29M	CAP SCREW M6-1 X 40
274	P0566274	HANDLE BUSHING
275	P6202	BALL BEARING 6202ZZ
276	PR05M	EXT RETAINING RING 15MM
277A	P0566277A	ECCENTRIC SHAFT
279A	P0566279A	SUPPORT BRACKET
280	PB83M	HEX BOLT M6-1 X 16
287	PSS07M	SET SCREW M5-.8 X 5
288	PSB04M	CAP SCREW M6-1 X 10
289	PW03M	FLAT WASHER 6MM
290A	P0566290A	SUPPORT
291A	P0566291A	PROTECT TUBE 1/2"X1100mm(L)
292	P0566292	CORD BUSHING
293	P0566293	MACHINE ID LABEL
294	PLABEL-20	DON'T OPEN LABEL
295	PLABEL-19	HANDS/BS BLADE 2"X3 5/16"H.
296	PLABEL-18	UNPLUG BANDSAW LABEL
297	PLABEL-14	ELECTRICITY LABEL
298	PLABEL-12	READ MANUAL 2"W X 3 5/16"
299	PLABEL-11	SAFETY GLASSES 2" X 3 5/16"
300	P0566300	TENSION LEVER LABEL
301	P0566301	TABLE LOCK LABEL

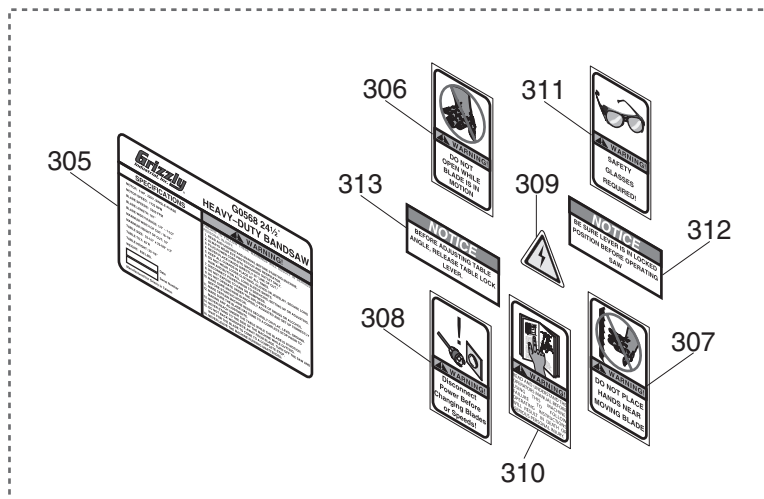
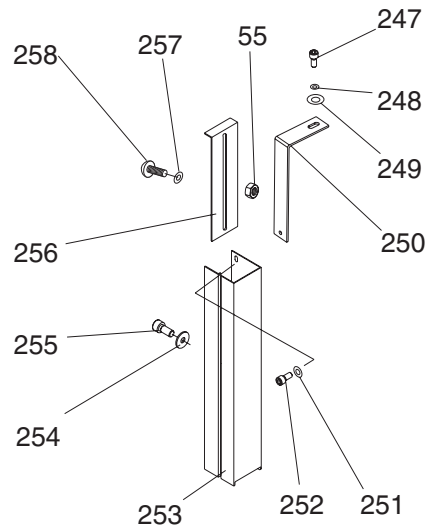
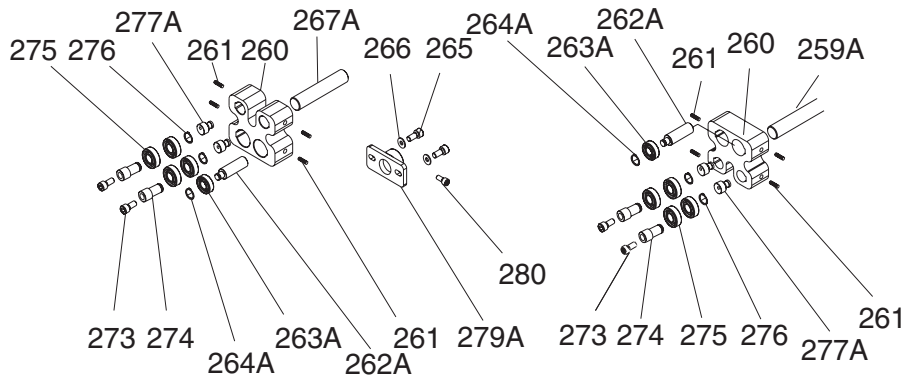
G0568/G0569 Parts Breakdown



G0568/G0569 Parts Breakdown



G0568/G0569 Parts Breakdown



G0568/G0569 Parts List

REF	PART #	DESCRIPTION
1	P0566001	HANDLE KNOB
2	P0566002	HANDLE SHAFT
3	PN05M	HEX NUT M16-1.5
4	P0566004	ROTATE SHAFT
5	PSBS03M	BUTTON HD CAP SCR M10-1.5 X 20
6	PLW06M	LOCK WASHER 10MM
7	P0566007	KNOB SCREW M10-1.5 X 25
8	P0566008	LOCATE HANDLE M10-1.5
9	P0566009	KNOB SCREW M10-1.5 X 25
10	P0566010	TRANSLUCENT PIECE
11	P0566011	RIVET 3.2 X 10
12	P0566012	LATCHING KNOB 6MM
13	PSB02M	CAP SCREW M6-1 X 20
14	PB73M	HEX BOLT M10-1.5 X 50
15	PN02M	NUT M10-1.5
16	P0566016	HEIGHT POINTER
17	PFS07M	FLANGE SCREW M5-.8 X 10
18	PHTEK15M	TAP SCREW M4 X 10
19	P0566019	STRAIN RELIEF M20
20	P0566020	PLATE
21	PHTEK4M	TAP SCREW M4 X 8
22	P0566022	CORD CLAMP 1/2"
23	P0568023	MOTOR 5HP G0568
23	P0569023	MOTOR 7-1/2HP G0569
23-1	P0568023-1	FAN COVER G0568
23-1	P0569023-1	FAN COVER G0569
23-2	P0568023-2	FAN G0568
23-2	P0569023-2	FAN G0569
23-3	P0568023-3	CAPACITOR COVER G0568
23-4	PC200A	CAPACITOR 200MFD 250V. G0568
23-5	P0568023-5	CAPACITOR COVER G0568
23-6	PC20A	CAPACITOR 20MFD/400V G0568
23-7	P0568023-7	ELECTRICAL BOX G0568
23-7	P0569023-7	WIRING BOX G0569
24	PSBS01M	BUTTON HD CAP SCR M8-1.25 X 20
25	P0566025	PIECE
26	PB01M	HEX BOLT M10-1.5 X 30
27	PN02M	HEX NUT M10-1.5
28	PSB02M	CAP SCREW M6-1 X 20
29	P0566029	LATCHING KNOB 6MM
30	PW01M	FLAT WASHER 8MM
31	PSB31M	CAP SCREW M8-1.25 X 25

REF	PART #	DESCRIPTION
32	P0566032	BUSHING
33	PSB31M	CAP SCREW M8-1.25 X 25
34	PSB06M	CAP SCREW M6-1 X 25
35	PLW02M	LOCK WASHER 6MM
36	P0566036	BRAKE PAD
37	P0566037	BUSHING
38	P0568038	BRAKE LEVER
39	PSB01M	CAP SCREW M6-1 X 16
40	PSB01M	CAP SCREW M6-1 X 16
41	PLW03M	LOCK WASHER 6MM
42	P0566042	BRAKE STEP PLATE
43	P0566043	SPRING
44	PN01M	HEX NUT M6-1
45	PSB01M	CAP SCREW M6-1 X 16
46	PHTEK4M	TAP SCREW M4 X 8
47	P0566047	CORD CLAMP 5/8"
48	P0566048	STEP CORD
49	PB41M	HEX BOLT M4-.7 X 30
50	P0566050	LIMIT SWITCH KL7141
51	PN04M	HEX NUT M4-.7
52	P0568052	UPPER WHEEL COVER
53	PN04M	HEX NUT M4-.7
54	PW05M	FLAT WASHER 4MM
56	PS38M	PHLP HD SCR M4-.7 X 10
57	PS68M	PHLP HD SCR M6-1 X 10
58	P0568058	LOWER WHEEL COVER
59	P0568059	SAW BLADE 4600X25.4X.9MM
60	P0566060	TENSION GAUGE HOUSING
61	P0566061	SPRING
62	PRP61M	PIN 3 X 12
63	P0566063	MOVING PLATE
64	PHTEK15M	TAP SCREW M4 X 10
65	P0566065	FIX PLATE
66	P0566066	TENSION POINTER
67	PHTEK6M	TAP SCREW M4 X 16
68	P0568068	TENSION SCALE
69	P0566069	CONNECTING CORD
70	P0566070	SWITCH CORD
71	P0566071	SWITCH PLATE
72	PHTEK15M	TAP SCREW M4 X 10
73	P0566073	KEY SWITCH
74	P0566074	STOP SWITCH

G0568/G0569 Parts List

REF	PART #	DESCRIPTION
75	P0566075	START SWITCH
76	P0566076	CONNECTING CORD
77	PFS09M	FLANGE SCREW M5-.8 X 50
78	P0566078	TERMINAL BOX
79	P0566079	TERMINAL HOUSE
80	P0568080	POWER CORD
81	P0566081	STRAIN RELIEF M20
82	P0568082	MAGNETIC SWITCH 220V G0568
82	P0569082	MAGNETIC SWITCH 220V G0569
82A	P0569082A	MAGNETIC SWITCH 440V G0569
83	PN04M	HEX NUT M4-.7
84	PW05M	FLAT WASHER 4MM
85	P0566085	DOOR LATCH SWITCH ADZ-S11
86	PFS10M	FLANGE SCREW M4-.7 X 35
87	P0568087	MACHINE BODY
88	PFS07M	FLANGE SCREW M5-.8 X 10
89	P0566089	SWITCH CORD
90	P0566090	PLATE
91	PSB31M	CAP SCREW M8-1.25 X 25
92	P0566092	CAM
93	P0566093	MOTOR CORD
94	PLN03M	LOCK NUT M6-1
95	PN02M	HEX NUT M10-1.5
96	PW04M	FLAT WASHER 10MM
97	PSB14M	CAP SCREW M8-1.25 X 30
98A	PSB60M	CAP SCREW M8-1.25 X 55
99	PN03M	HEX NUT M8-1.25
100	P0566100	LOCATE PLATE
101	PFH39M	FLAT HD SCR M5-.8 X 16
102	P0568102	SPRING
103	P0566103	BUSHING
104	P0566104	PRESS BLOCK
105	PSS07M	SET SCREW M5-.8 X 5
106	P51201	BEARING 51201
107	PSS07M	SET SCREW M5-.8 X 5
108	P0566108	TENSION LINE
109	P0568109	SHAFT
110	P0566110	HANDWHEEL
111	PSB06M	CAP SCREW M6-1 X 25
112	P0566112	SQUARE SHAFT
113	PW01M	FLAT WASHER 8MM

REF	PART #	DESCRIPTION
114	PSB31M	CAP SCREW M8-1.25 X 25
115	P0566115	UPPER WHEEL HINGE (ASM.)
116	PSS75M	SET SCREW M10-1.5 X 16
117	P0566117	GUIDE BLOCK
118	P0568118	UPPER WHEEL SHAFT
119	P6306	BALL BEARING 6306LLU
120	PR64M	INT RETAINING RING 72MM
121	P0568121	BUSHING
122	P0568122	UPPER WHEEL 25"
123	PW01M	FLAT WASHER 8MM
124	PLW04M	LOCK WASHER 8MM
125	PSB14M	CAP SCREW M8-1.25 X 20
126	PSB14M	CAP SCREW M8-1.25 X 20
127	PLW04M	LOCK WASHER 8MM
128	PW01M	FLAT WASHER 8MM
129	P6306	BALL BEARING 6306LLU
130	P0568130	LOWER WHEEL 25"
131	P0568131	BUSHING
132	PR64M	INT RETAINING RING 72MM
133	P0566133	PULLEY
134	PSS04M	SET SCREW M6-1 X 12
137	PSB14M	CAP SCREW M8-1.25 X 20
138	P0566138	PULLEY
139	P0568139	LOWER SHAFT
140	PSBS01M	BUTTON HD CAP SCR M8-1.25 X 20
141	PW03M	FLAT WASHER 6MM
142	PVA33	V-BELT A-33 4L330
143	P0566143	BRUSH
144	PLN03M	LOCK NUT M6-1
145	PW03M	FLAT WASHER 6MM
146	PSB02M	CAP SCREW M6-1 X 20
147	PLN03M	LOCK NUT M6-1
148	P0566148	BRUSH
149	PW03M	FLAT WASHER 6MM
150	PSB02M	CAP SCREW M6-1 X 20
151	PLN03M	LOCK NUT M6-1
155	P0566155	FENCE
156	P0566156	KNOB SCREW M10-1.5 X 25
157	P0566157	POINTER
158	PFS01M	FLANGE SCREW M5-.8 X 8
159	PW03M	FLAT WASHER 6MM

G0568/G0569 Parts List

REF	PART #	DESCRIPTION
160	PLW02M	LOCK WASHER 6MM
161	PSB14M	CAP SCREW M8-1.25 X 20
162	PSB72M	CAP SCREW M10-1.5 X 30
163	PLW06M	LOCK WASHER 10MM
164	PW04M	FLAT WASHER 10MM
165	P0566165	TRUNNION HOUSING
166	P0566166	BLADE GUARD
167	PFS11M	FLANGE SCREW M6 X 10
168	P0566168	PRESS SHAFT
169	P0566169	MICRO ADJUSTING RING
170	PSB14M	CAP SCREW M8-1.25 X 20
171	PLW04M	LOCK WASHER 8MM
172	P0566172	HANDLE SHAFT
173	P0566173	HANDLE KNOB M12-1.75
174	PSB84M	CAP SCREW M10-1.5 X 35
175	PLW04M	LOCK WASHER 8MM
176	PW04M	FLAT WASHER 10MM
177	P0566177	TRUNNION BLOCK
178	P0566178	PRESS BLOCK
179	PS38M	PHLP HD SCR M4-.7 X 10
180	P0566180	POINTER
181	P0568181	GUARD RAIL
182	P0568182	TABLE
183	P0566183	TABLE INSERT
184	P0566184	MITER GAUGE ASSY
184-1	P0566184-1	GUIDE
184-2	P0566184-2	GUIDE BAR
184-3	P0566184-3	LOCATE BRACKET
184-4	P0566184-4	LOCATE SHAFT
184-5	P0566184-5	POINTER
184-6	P0566184-6	STEP SCREW
184-7	P0566184-7	HANDLE
184-8	P0566184-8	MITER GAUGE BODY
184-9	PFH9M	FLAT HD SCR M6-1 X 6
184-10	PS06	PHLP HD SCR 10-24 X 3/8
184-11	PS56M	PHLP HD SCR M4-.7 X 16
184-12	PN04M	HEX NUT M4-.7
184-13	PW01M	FLAT WASHER 8MM
185	PLW04M	LOCK WASHER 8MM
186	PFS07M	FLANGE SCREW M5-.8 X 10
187	P0566187	COVER

REF	PART #	DESCRIPTION
189	PSB11M	CAP SCREW M8-1.25 X 16
190	PFH19M	FLAT HD SCR M4-.7 X 10
191	P0566191	EXTENSION RACK
192	P0566192	COVER
193	P0566193	FIXED BOLT
194	P0566194	PINION GEAR
195	P0566195	FIXED PLATE
196	P0566196	WORM CYLINER
197	PN05M	HEX NUT M16-1.5
198	P0566198	GUIDE BRACKET
199	PW01M	FLAT WASHER 8MM
200	PSBS04M	BUTTON HD CAP SCR M8-1.25 X 35
201	P0566201	BUSHING
202	P0566202	SWITCH BUSHING
203	PSB06M	CAP SCREW M6-1 X 25
204	P0568204	HANDWHEEL
205	P0568205	HANDLE
206	P0568206	UPPER GUIDE SUPPORT BLOCK
207	P0566207	RACK
208	PSB01M	CAP SCREW M6-1 X 16
209	PN04M	HEX NUT M4-.7
210	PS38M	PHLP HD SCR M4-.7 X 10
211A	P0566211A	UPPER GUIDE SUPPORT BLOCK
212	PB83M	HEX BOLT M6-1 X 16
213	P0566213	GUIDE BRACKET
214	PSB14M	CAP SCREW M8-1.25 X 20
215	PLW04M	LOCK WASHER 8MM
216	P0566216	SUPPORT PLATE
217	PW01M	FLAT WASHER 8MM
218	PSBS01M	BUTTON HD CAP SCR M8-1.25 X 20
219	PB04M	HEX BOLT M6-1 X 10
220	PLN04M	LOCK NUT M8-1.25
221	PLW04M	FLAT WASHER 8MM
222	P0566222	SLIDING PLATE
223	PB30M	HEX BOLT M8-1.25 X 55
224	PLW03M	LOCK WASHER 6MM
225	P0566225	WORM CYLINDER
226	PN05M	HEX NUT M16-1.5
227	P0566227	HANDWHEEL
228	P0566228	KNOB M10-1.5 X 12
229	PSB06M	CAP SCREW M6-1 X 25

G0568/G0569 Parts List

REF	PART #	DESCRIPTION
230	P0566230	BUSHING
231	P0566231	SWITCH BUSHING
232	PSS07M	SET SCREW M5-.8 X 5
233	PN03M	HEX NUT M5-.8
234	PLW04M	LOCK WASHER 8MM
235	PSB11M	CAP SCREW M8-1.25 X 16
236	PFS07M	FLANGE SCREW M5-.8 X 10
237	P0566237	COVER
238	P0566238	COVER
239	P0566239	SPECIAL BOLT
240	P0568240	STRETCH RACK
241	PFH19M	FLAT HD SCR M4-.7 X 10
242	P0566242	RACK
243	P0568243	SQUARE TUBE
244	PS38M	PHLP HD SCR M4-.7 X 10
245	PN04M	HEX NUT M4-.7
246	P0568246	PINION GEAR
247	PSB04M	CAP SCREW M6-.1 X 10
248	PLW03M	LOCK WASHER 6MM
249	PW03M	FLAT WASHER 6MM
250	P0566250	SUPPORT PLATE
251	PW03M	FLAT WASHER 6MM
252	PSB04M	CAP SCREW M6-1 X 10
253	P0568253	PROTECT COVER ASSY
254	PW03M	FLAT WASHER 6MM
255	PSB04M	CAP SCREW M6-.1 X 10
256	P0568256	SLIDING PLATE
257	P0566257	PLASTIC WASHER 6MM
258	PS68M	PHLP HD SCR M6-1 X 10
259A	P0566259A	ADJUST BAR
260A	P0566260A	BLADE GUIDE SUPPORT
261	PSS01M	SET SCREW M6-1 X 10
262A	P0566262A	UPPER SPACING SLEEVE
263A	P6201	BALL BEARING 6201ZZ
264A	PR03M	EXT RETAINING RING 12MM
265	PSB01M	CAP SCREW M6-1 X 16
266	PW03M	FLAT WASHER 6MM
267A	P0566267A	ADJUSTING SHAFT

REF	PART #	DESCRIPTION
273	PB47M	HEX BOLT M6-1 X 40
274	P0566274	HANDLE BUSHING
275	P6202	BALL BEARING 6202ZZ
276	PR05M	EXT RETAINING RING 15MM
277A	P0566277A	ECCENTRIC SHAFT
279A	P0566279A	LOWER SUPPORT BRACKET
280	PS83M	HEX BOLT M6-1 X 16
287	PSS07M	SET SCREW M5-.8 X 5
289	P0568289	CORD CONNECTOR 224-201
290	PS52M	PHLP HD SCR M4-.7 X 20
291	PW01M	FLAT WASHER 8MM
292	PN03M	HEX NUT M8-1.25
293	P0568293	CORD CLAMP 5/16"
294	PHTEK15M	TAP SCREW M4 X 10
295	PW01M	FLAT WASHER 8MM
296	P0568296	NYLON PIECE
297	PW01M	FLAT WASHER 8MM
298	PLW04M	LOCK WASHER 8MM
299	P0568299	PIN 6 X 15
300	PFS11M	FLANGE SCREW M6-1 X 10
301	PW03M	FLAT WASHER 6MM
302	P0568302	SUPPORT
303	P0568303	PROTECT TUBE 1/2" X 1100MM(L)
304	P0568304	CORD BUSHING
305	P0568305	MACHINE ID LABEL G0568
305	P0569305	MACHINE ID LABEL G0569
306	PLABEL-20	DON'T OPEN LABEL
307	PLABEL-19	HANDS/BS BLADE 2"X3 5/16"H.
308	PLABEL-18	UNPLUG BANDSAW LABEL
309	PLABEL-14	ELECTRICITY LABEL
310	PLABEL-12	READ MANUAL 2"W X 3 5/16"
311	PLABEL-11	SAFETY GLASSES 2" X 3 5/16"
312	P0566312	TESNSION LEVER LABEL
313	P0566313	TABLE LOCK LABEL
314	PB76M	HEX BOLT M12-1.75 X 110
315	PLW05M	LOCK WASHER 12MM
316	PW06M	FLAT WASHER 12MM
317	P0568317	RISER BAR