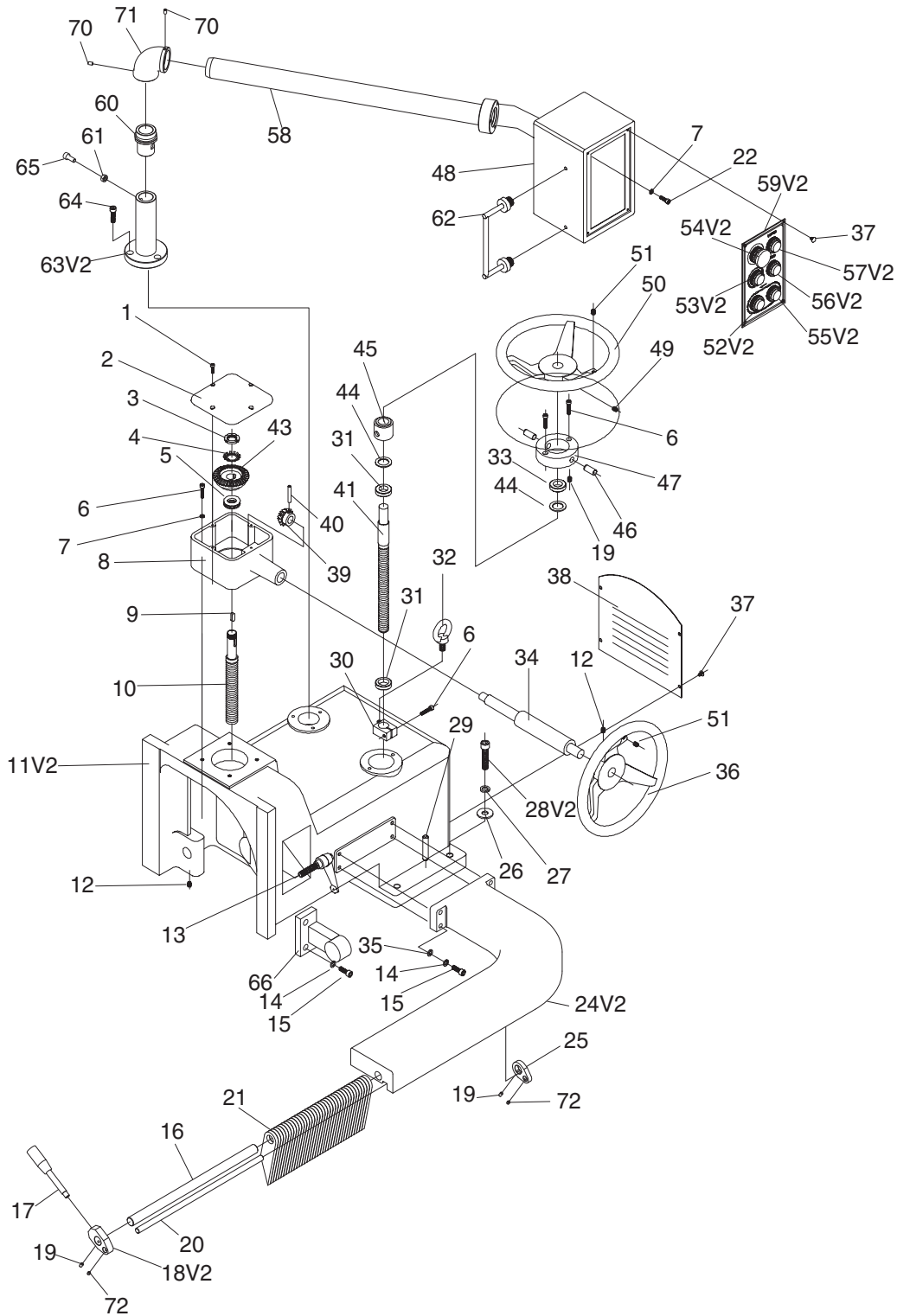


SECTION 10: PARTS

We do our best to stock replacement parts when possible, but we cannot guarantee that all parts shown are available for purchase. Call (800) 523-4777 or visit www.grizzly.com/parts to check for availability.

Upper Saw Breakdown



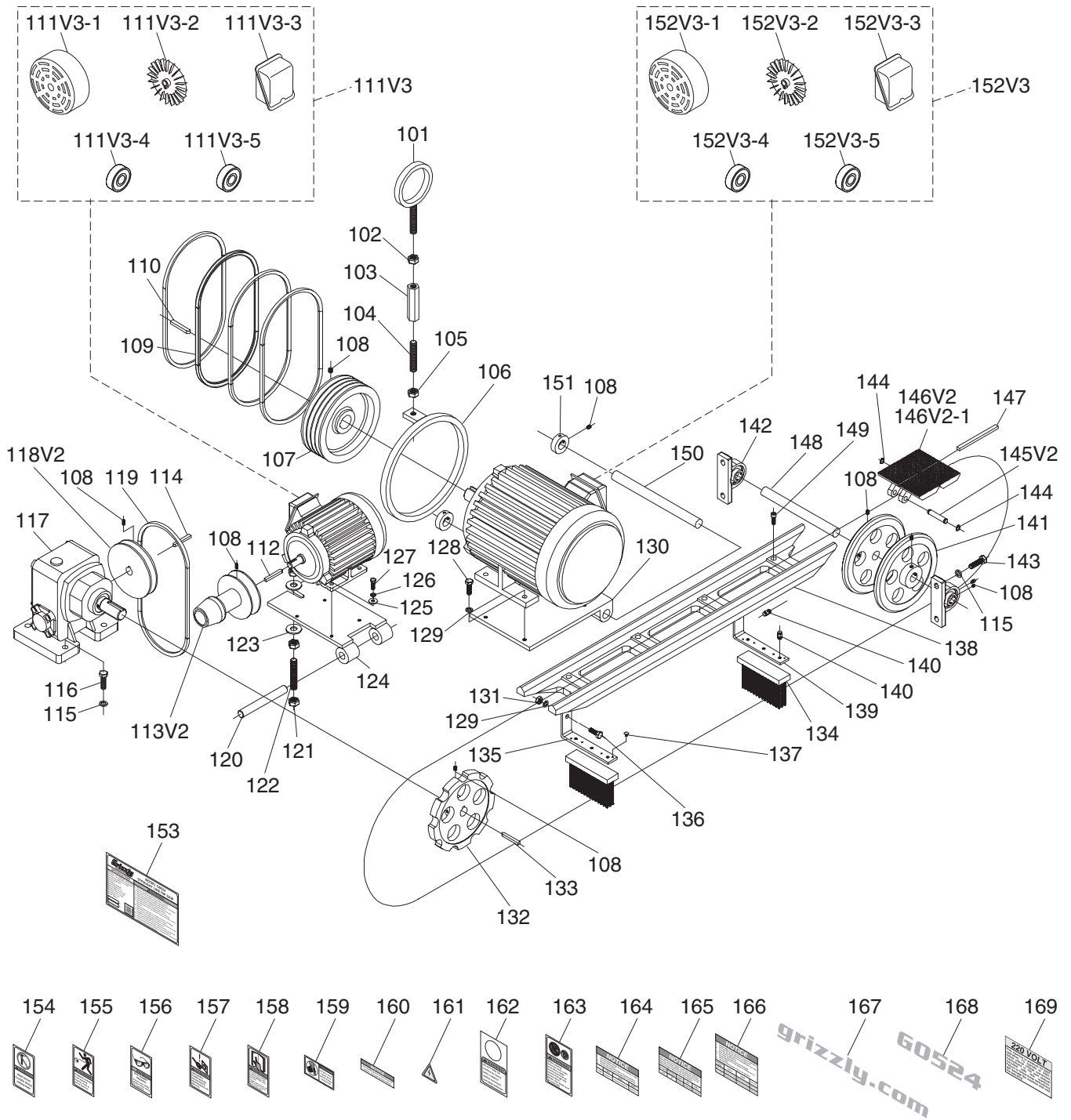
Upper Saw Parts List

REF	PART #	DESCRIPTION
1	P0524001	CAP SCREW M5-.8 X 16
2	P0524002	GEARBOX COVER
3	P0524003	SPANNER NUT M20-1.0
4	P0524004	EXT TOOTH WASHER 20MM
5	P0524005	THRUST BEARING 51104
6	P0524006	CAP SCREW M6-1 X 30
7	P0524007	LOCK WASHER 6MM
8	P0524008	GEAR BOX
9	P0524009	KEY 7 X 7 X 18
10	P0524010	BLADE GUARD LEADSCREW
11V2	P0524011V2	BLADE GUARD HOUSING V2.07.13
12	P0524012	SET SCREW M8-1.25 X 16
13	P0524013	ADJUSTABLE HANDLE
14	P0524014	LOCK WASHER 8MM
15	P0524015	CAP SCREW M8-1.25 X 35
16	P0524016	FINGER SHAFT
17	P0524017	LEVER M10-1.5 X 125 W/KNOB
18V2	P0524018V2	FINGER SHAFT BRACKET (LH) V2.07.13
19	P0524019	SET SCREW M6-1 X 10
20	P0524020	FINGER STOP SHAFT
21	P0524021	ANTI-KICKBACK FINGER
22	P0524022	CAP SCREW M6-1 X 16
24V2	P0524024V2	SEAT W/FIXED PLATE ASSEMBLY V2.07.13
25	P0524025	FINGER SHAFT BRACKET (RH)
26	P0524026	FLAT WASHER 12MM
27	P0524027	LOCK WASHER 12MM
28V2	P0524028V2	CAP SCREW M12-1.75 X 60
29	P0524029	LOCK SEAT TAPER PIN
30	P0524030	LOCKING STOPPER
31	P0524031	LEAD SCREW RING
32	P0524032	LIFTING EYE BOLT M12-1.75 X 22
33	P0524033	HANDWHEEL RING
34	P0524034	HANDWHEEL SHAFT
35	P0524035	FLAT WASHER 8MM

REF	PART #	DESCRIPTION
36	P0524036	HANDWHEEL
37	P0524037	PHLP HD SCR M5-.8 X 8
38	P0524038	COVER W/VENTS
39	P0524039	BEVEL GEAR (SMALL)
40	P0524040	ROLL PIN 5 X 25
41	P0524041	BLADE LEADSCREW
43	P0524043	BEVEL GEAR (BIG)
44	P0524044	SPACER
45	P0524045	BUSHING
46	P0524046	HANDWHEEL PIN
47	P0524047	HANDWHEEL BRACKET
48	P0524048	CONTROL BOX
49	P0524049	SET SCREW M8-1.25 X 10
50	P0524050	HANDWHEEL
51	P0524051	SET SCREW 3/8-16 X 3/8
52V2	P0524052V2	ON BUTTON KN KB2-EW33M1 22MM V2.09.21
53V2	P0524053V2	ON BUTTON KN KB2-EW33M1 22MM V2.09.21
54V2	P0524054V2	E-STOP BUTTON KN KB2-ES542 22MM V2.09.21
55V2	P0524055V2	OFF BUTTON KN KB2-EL42 22MM V2.09.21
56V2	P0524056V2	OFF BUTTON KN KB2-EL42 22MM V2.09.21
57V2	P0524057V2	POWER BUTTON KN KE-22DS 22MM V2.09.21
58	P0524058	CONTROL BOX ARM, HORIZONTAL
59V2	P0524059V2	CONTROL BOX PANEL 22MM V2.09.21
60	P0524060	ROTATION SEAT
61	P0524061	HEX NUT M8-1.25
62	P0524062	CONTROL BOX HANDLE
63V2	P0524063V2	ROTATION SEAT W/VERTICAL ARM V2.06.14
64	P0524064	CAP SCREW M8-1.25 X 20
65	P0524065	SET SCREW M8-1.25 X 20
66	P0524066	BRACKET
70	P0524070	SET SCREW M6-1 X 10
71	P0524071	ELBOW PT 1-1/4
72	P0524072	SET SCREW M6-1 X 6



Motors & Conveyor Track



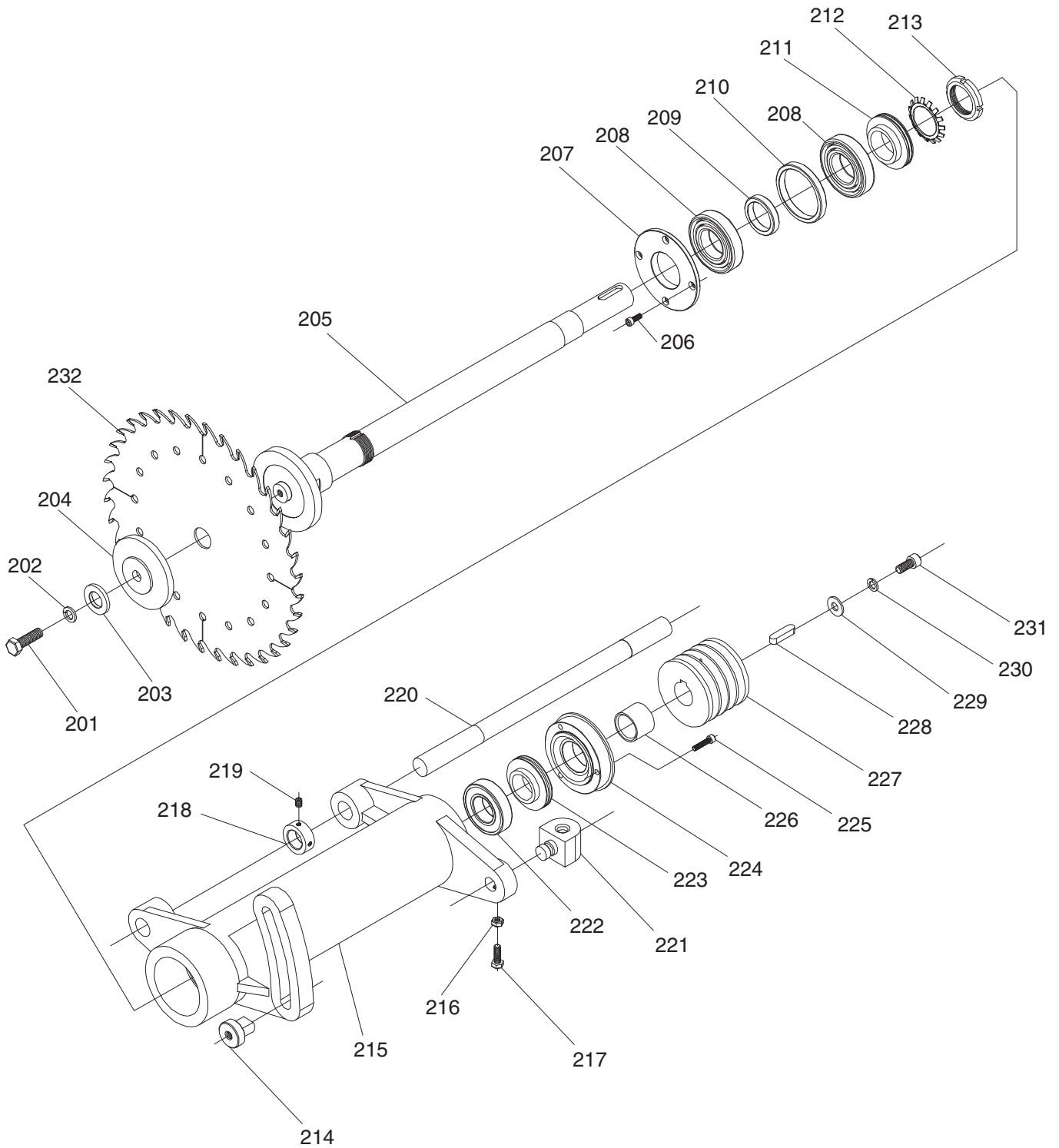
Motors & Conveyor Track Parts List

REF	PART #	DESCRIPTION
101	P0524101	PULLEY EYE BOLT M16-2 X 90 LH
102	P0524102	HEX NUT M16-2 LH
103	P0524103	PULLEY COUPLING NUT M16-2 LH/RH
104	P0524104	STUD-FT M16-2 X 110
105	P0524105	HEX NUT M16-2
106	P0524106	MOTOR LIFTING RING
107	P0524107	MOTOR PULLEY
108	P0524108	SET SCREW M8-1.25 X 16
109	P0524109	V-BELT A55
110	P0524110	KEY 10 X 8 X 70
111V3	P0524111V3	CONVEYOR MOTOR 2HP 220V/440V 3-PH V3.07.16
111V3-1	P0524111V3-1	MOTOR FAN COVER
111V3-2	P0524111V3-2	MOTOR FAN
111V3-3	P0524111V3-3	MOTOR JUNCTION BOX
111V3-4	P0524111V3-4	BALL BEARING 6205LLB
111V3-5	P0524111V3-5	BALL BEARING 6204 CM LLB
112	P0524112	KEY 8 X 8 X 40
113V2	P0524113V2	REDUCER PULLEY V2.11.20
114	P0524114	KEY 7 X 7 X 45
115	P0524115	LOCK WASHER 12MM
116	P0524116	HEX BOLT M12-1.75 X 40
117	P0524117	REDUCER WORM GEAR
118V2	P0524118V2	REDUCER PULLEY V2.11.20
119	P0524119	COGGED BELT 1922V30-22
120	P0524120	CONVEYOR MOTOR PIVOT SHAFT
121	P0524121	HEX NUT M12-1.75
122	P0524122	STUD-FT M12-1.75 X 100
123	P0524123	FLAT WASHER 12MM
124	P0524124	CONVEYOR MOTOR MOUNT
125	P0524125	FLAT WASHER 12MM
126	P0524126	LOCK WASHER 8MM
127	P0524127	HEX BOLT M8-1.25 X 25
128	P0524128	HEX BOLT M10-1.5 X 35
129	P0524129	LOCK WASHER 10MM
130	P0524130	BLADE MOTOR MOUNT
131	P0524131	HEX NUT M10-1.5
132	P0524132	SPROCKET 10T
133	P0524133	KEY 10 X 8 X 30
134	P0524134	BRUSH
135	P0524135	BRUSH L-BRACKET (LH)
136	P0524136	HEX BOLT M10-1.5 X 30

REF	PART #	DESCRIPTION
137	P0524137	PHLP HD SCR 1/8-40 X 3/4
138	P0524138	CONVEYOR BODY
138-1	P0524138-1	CAT. BLOCK FITTED BAKELITE
139	P0524139	BRUSH L-BRACKET (RH)
140	P0524140	BALL OILER 1/8 NPT THREADED
141	P0524141	IDLE WHEEL
142	P0524142	PILLOW BLOCK BEARING
143	P0524143	HEX BOLT M12-1.75 X 30
144	P0524144	EXT RETAINING RING 12MM
145V2	P0524145V2	BLOCK PIVOT SHAFT 74MM V2.01.12
146V2	P0524146V2	ENTIRE FEED CHAIN ASSY V2.01.12
146V2-1	P0524146V2-1	SINGLE LINK FOR FEED CHAIN V2.01.12
147	P0524147	BAKELITE PLASTIC INSERT
148	P0524148	IDLER WHEEL AXLE
149	P0524149	CAP SCREW M8-1.25 X 25
150	P0524150	BLADE MOTOR MOUNT PIVOT SHAFT
151	P0524151	LOCK COLLAR
152V3	P0524152V3	MOTOR 15HP 220V/440V 3-PH V3.07.16
152V3-1	P0524152V3-1	MOTOR FAN COVER
152V3-2	P0524152V3-2	MOTOR FAN
152V3-3	P0524152V3-3	MOTOR JUNCTION BOX
152V3-4	P0524152V3-4	BALL BEARING 6308 CM LLB
152V3-5	P0524152V3-5	BALL BEARING 6308 CM LLB
153	P0524153	MACHINE ID LABEL
154	P0524154	KEEP COVER CLOSED LABEL
155	P0524155	KICKBACK LABEL
156	P0524156	SAFETY GLASSES
157	P0524157	UNPLUG LABEL 220V
158	P0524158	READ MANUAL
159	P0524159	INFEED HAND LABEL
160	P0524160	TRAINING LABEL
161	P0524161	ELECTRICITY
162	P0524162	HANGING BUTTON LABEL
163	P0524163	ARBOR ROTATION LABEL
164	P0524164	GREASE FITTING LABEL
165	P0524165	LUBRICANT OIL LABEL
166	P0524166	GEAR OIL LABEL
167	P0524167	GRIZZLY.COM LABEL
168	P0524168	MODEL NUMBER LABEL
169	P0524169	PREWIRED 220V LABEL



Main Spindle



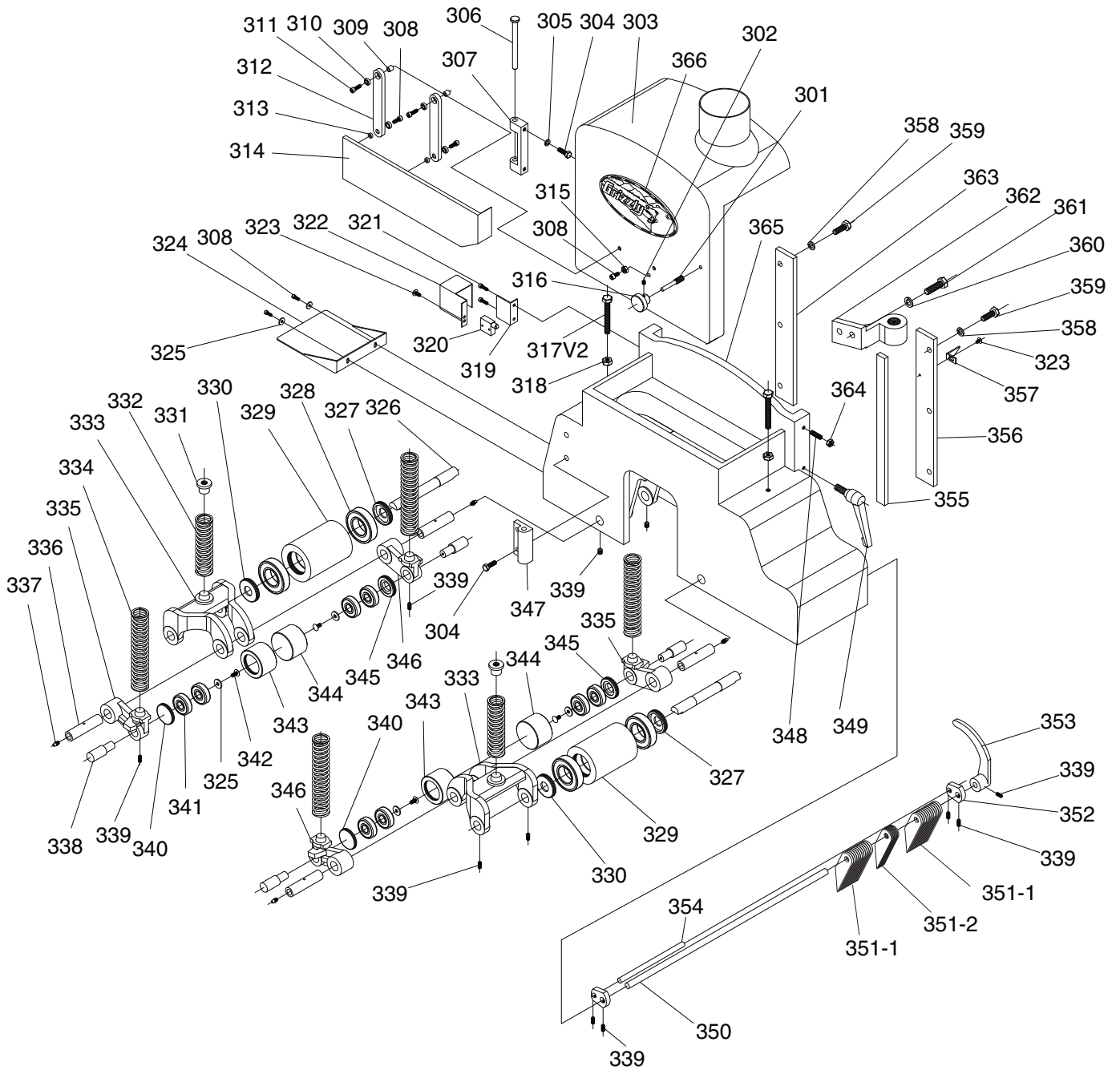
Main Spindle Parts List

REF	PART #	DESCRIPTION
201	P0524201	HEX BOLT M12-1.75 X 40
202	P0524202	LOCK WASHER 12MM
203	P0524203	SAW BLADE WASHER 12 X 30 X 5MM
204	P0524204	BLADE FLANGE
205	P0524205	BLADE ARBOR
206	P0524206	CAP SCREW M6-1 X 16
207	P0524207	BEARING COVER
208	P0524208	ANGULAR CONTACT BEARING 7208CYDB
209	P0524209	SPACER
210	P0524210	SPACER
211	P0524211	BEARING SEAT
212	P0524212	EXT TOOTH WASHER 40MM
213	P0524213	SPANNER LOCK NUT M40-15 LH
214	P0524214	ARBOR HOUSING NUT M12-1.75
215	P0524215	ARBOR HOUSING
216	P0524216	HEX NUT M8-1.25

REF	PART #	DESCRIPTION
217	P0524217	HEX BOLT M8-1.25 X 35
218	P0524218	LOCK COLLAR
219	P0524219	SET SCREW M8-1.25 X 10
220	P0524220	ARBOR HOUSING PIVOT SHAFT
221	P0524221	ARBOR HOUSING NUT TW22-P5
222	P0524222	BALL BEARING 6207ZZ
223	P0524223	BEARING SEAT
224	P0524224	ARBOR HOUSING END CAP
225	P0524225	CAP SCREW M6-1 X 30
226	P0524226	BUSHING
227	P0524227	ARBOR PULLEY
228	P0524228	KEY 10 X 8 X 40
229	P0524229	FLAT WASHER 10MM
230	P0524230	LOCK WASHER 10MM
231	P0524231	CAP SCREW M10-1.5 X 25
232	P0524232	SAW BLADE 12" X 1" X 48T X 4MM W



Head



Head Parts List

REF	PART #	DESCRIPTION
301	P0524301	STUD-SE M10-1.5 X 100, 20
302	P0524302	SET SCREW M6-1 X 6
303	P0524303	CHIP FUNNEL
304	P0524304	PHLP HD SCR M8-1.25 X 25
305	P0524305	LOCK WASHER 8MM
306	P0524306	SHAFT
307	P0524307	SIDE GUARD HINGE
308	P0524308	PHLP HD SCR M6-1 X 16
309	P0524309	BUSHING 6 X 10 X 10T
310	P0524310	BALL BEARING 696ZZ
311	P0524311	PHLP HD SCR M6-1 X 25
312	P0524312	WOBBLE ARM
313	P0524313	BUSHING 6 X 10 X 6T
314	P0524314	SIDE GUARD
315	P0524315	HEX NUT M6-1
316	P0524316	KNOB 7MM, STEEL
317V2	P0524317V2	HEX BOLT M10-1.5 X 70 V2.06.18
318	P0524318	HEX NUT M10-1.5
319	P0524319	LIMIT SWITCH BRACKET
320	P0524320	LIMIT SWITCH
321	P0524321	CAP SCREW M5-.8 X 12
322	P0524322	LIMIT SWITCH COVER
323	P0524323	PHLP HD SCR M5-.8 X 8
324	P0524324	BACK SAFETY GUARD
325	P0524325	FLAT WASHER 6MM
326	P0524326	SHAFT
327	P0524327	BEARING SEAT (RH)
328	P0524328	BALL BEARING 6204ZZ
329	P0524329	ROLLER, LARGE
330	P0524330	BEARING SEAT (LH)
331	P0524331	SPRING NUT M10-1.5
332	P0524332	COMPRESSION SPRING
333	P0524333	ROLLER ARM
334	P0524334	COMPRESSION SPRING 26 X 30 X 155

REF	PART #	DESCRIPTION
335	P0524335	ROLLER BRACKET
336	P0524336	ROLLER ARM PIVOT SHAFT
337	P0524337	GREASE FITTING M6-1 X 5
338	P0524338	SHOULDER SHAFT
339	P0524339	SET SCREW M6-1 X 10
340	P0524340	BEARING SEAT (LH)
341	P0524341	BALL BEARING 6302ZZ
342	P0524342	PHLP HD SCR M6-1 X 12
343	P0524343	ROLLER (LH)
344	P0524344	ROLLER (RH)
345	P0524345	BEARING SEAT (RH)
346	P0524346	ROLLER BRACKET
347	P0524347	HINGE
348	P0524348	SET SCREW M8-1.25 X 30
349	P0524349	ADJUSTABLE HANDLE M12-1.75 X 30
350	P0524350	FINGER PIVOT SHAFT
351-1	P0524351-1	ANTI-KICKBACK FINGER 5MM
351-2	P0524351-2	ANTI-KICKBACK FINGER 3MM
352	P0524352	PIVOT SHAFT BRACKET
353	P0524353	HOOK-TYPE BRACKET
354	P0524354	FINGER STOP SHAFT
355	P0524355	GIB
356	P0524356	CLAMP BAR (RH)
357	P0524357	POINTER
358	P0524358	LOCK WASHER 10MM
359	P0524359	HEX BOLT M10-1.5 X 30
360	P0524360	LOCK WASHER 12MM
361	P0524361	HEX BOLT M12-1.75 X 40
362	P0524362	PIVOT BRACKET
363	P0524363	CLAMP BAR (LH)
364	P0524364	HEX NUT M8-1.25
365	P0524365	ROLLER HOUSING
366	P0524366	GRIZZLY NAMEPLATE (LARGE)



Table & Cabinet

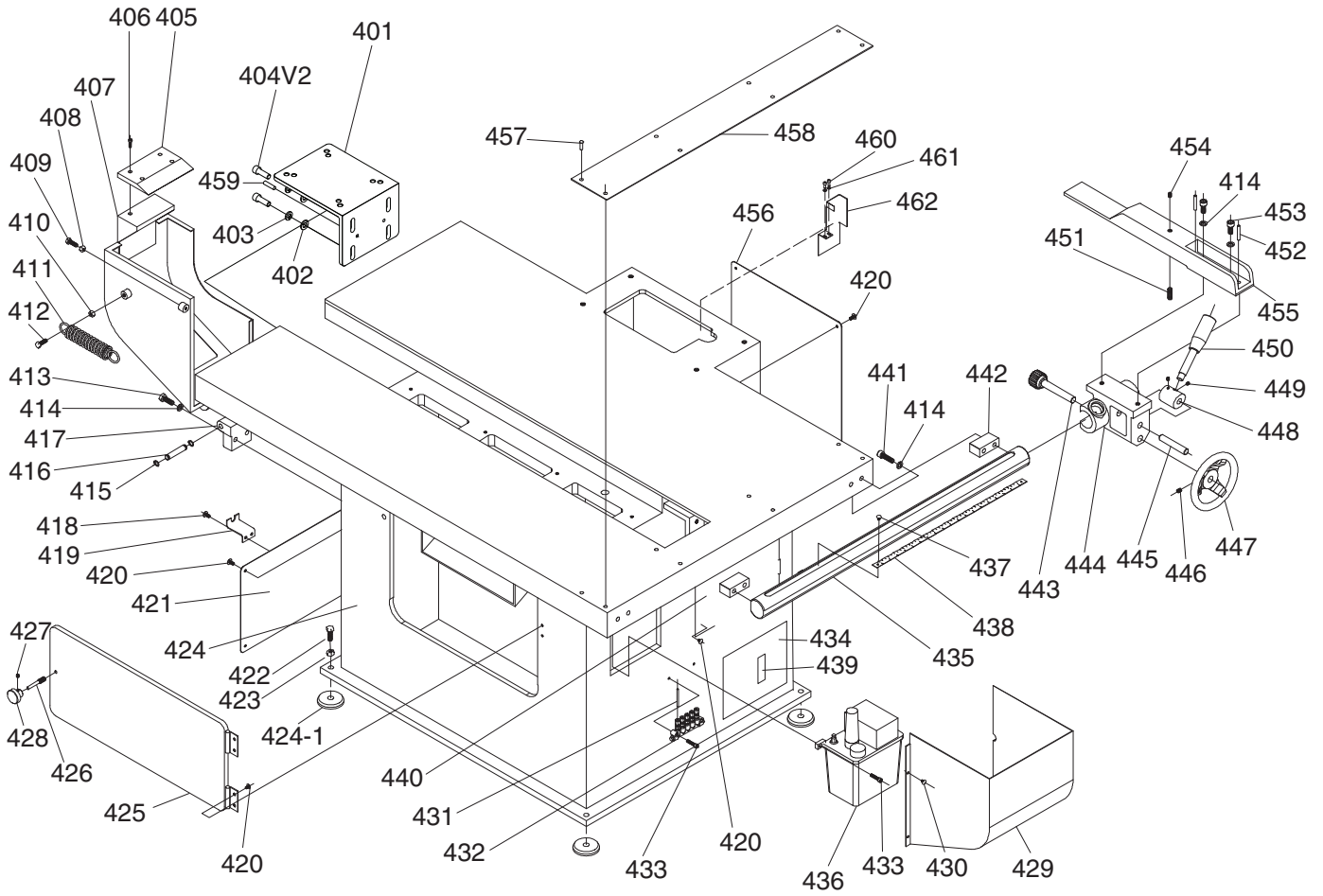


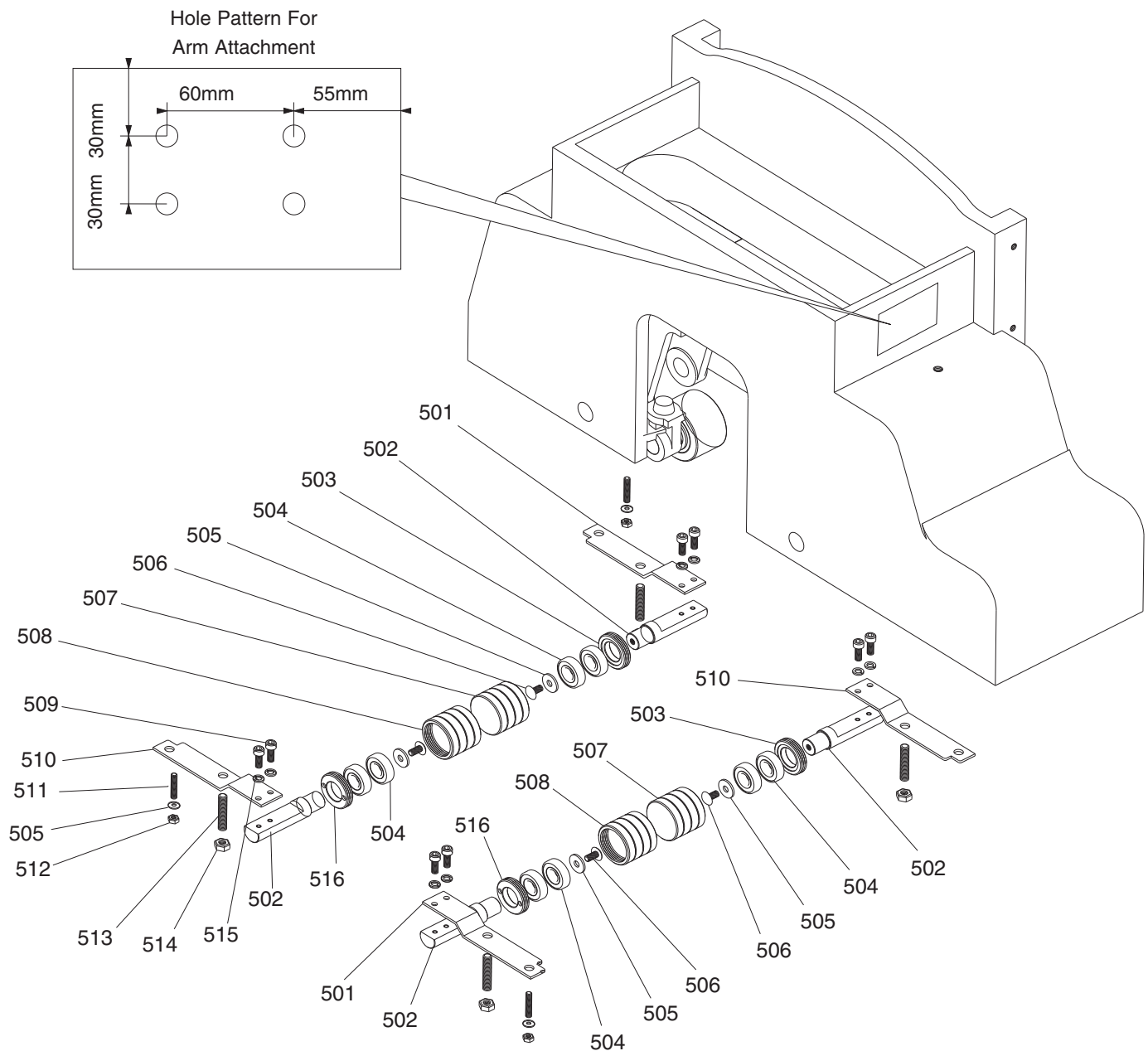
Table & Cabinet Parts List

REF	PART #	DESCRIPTION
401	P0524401	SUPPORT L-BRACKET
402	P0524402	FLAT WASHER 12MM
403	P0524403	LOCK WASHER 12MM
404V2	P0524404V2	CAP SCREW M12-1.75 X 35 V2.06.18
405	P0524405	COVER PLATE
406	P0524406	CAP SCREW M5-.8 X 16
407	P0524407	COVER PLATE BRACKET
408	P0524408	HEX NUT M8-1.25
409	P0524409	HEX BOLT M8-1.25 X 35
410	P0524410	HEX NUT M10-1.25
411	P0524411	COMPRESSION SPRING 22 X 25 X 152
412	P0524412	CAP SCREW M10-1.25 X 35
413	P0524413	HEX BOLT M10-1.5 X 45
414	P0524414	LOCK WASHER 10MM
415	P0524415	EXT RETAINING RING 12MM
416	P0524416	SHAFT
417	P0524417	BRACKET
418	P0524418	CAP SCREW M6-1 X 10
419	P0524419	BRACKET
420	P0524420	PHLP HD SCR M6-1 X 12
421	P0524421	COVER
422	P0524422	HEX BOLT M16-1.5 X 80
423	P0524423	HEX NUT M16-1.5
424	P0524424	CABINET
424-1	P0524424-1	CAST IRON FEET
425	P0524425	CABINET COVER (LH)
426	P0524426	STUD-SE M10-1.5 X 100, 20
427	P0524427	SET SCREW M6-1 X 6
428	P0524428	KNOB 7MM, STEEL
429	P0524429	LUBRICATOR COVER
430	P0524430	PHLP HD SCR M5-.8 X 8
431	P0524431	OIL TUBE

REF	PART #	DESCRIPTION
432	P0524432	LUBRICATION DISTRIBUTOR
433	P0524433	CAP SCREW M6-1 X 20
434	P0524434	CABINET COVER, FRONT
435	P0524435	RAIL W/RACK
436	P0524436	LUBRICATOR
437	P0524437	PHLP HD SCR M3-.5 X 8
438	P0524438	SCALE 480MM
439	P0524439	WINDOW, ACRYLIC
440	P0524440	ELECTRICAL CABINET DOOR
441	P0524441	CAP SCREW M10-1.5 X 60
442	P0524442	RAIL BRACKET
443	P0524443	GEAR SHAFT
444	P0524444	GEARBOX
445	P0524445	SHAFT
446	P0524446	SET SCREW M8-1.25 X 10
447	P0524447	HANDWHEEL
448	P0524448	LEVER HUB
449	P0524449	SET SCREW M6-1 X 10
450	P0524450	LEVER M12-1.75 X 140 W/KNOB
451	P0524451	STUD-FT M10 X 15 X 28
452	P0524452	DOWEL PIN #7 X 1-1/2"
453	P0524453	CAP SCREW M10-1.25 X 35
454	P0524454	SET SCREW M10-1.5 X 16
455	P0524455	FENCE
456	P0524456	CABINET COVER (RH)
457	P0524457	FLAT HD SCR M6-1 X 20
458	P0524458	SAFETY COVER
459	P0524459	TAPER PIN 7 X 35
460	P0524460	CAP SCREW M5-.8 X 12
461	P0524461	LOCK WASHER 5MM
462	P0524462	WIRING COVER



Auxiliary Rollers

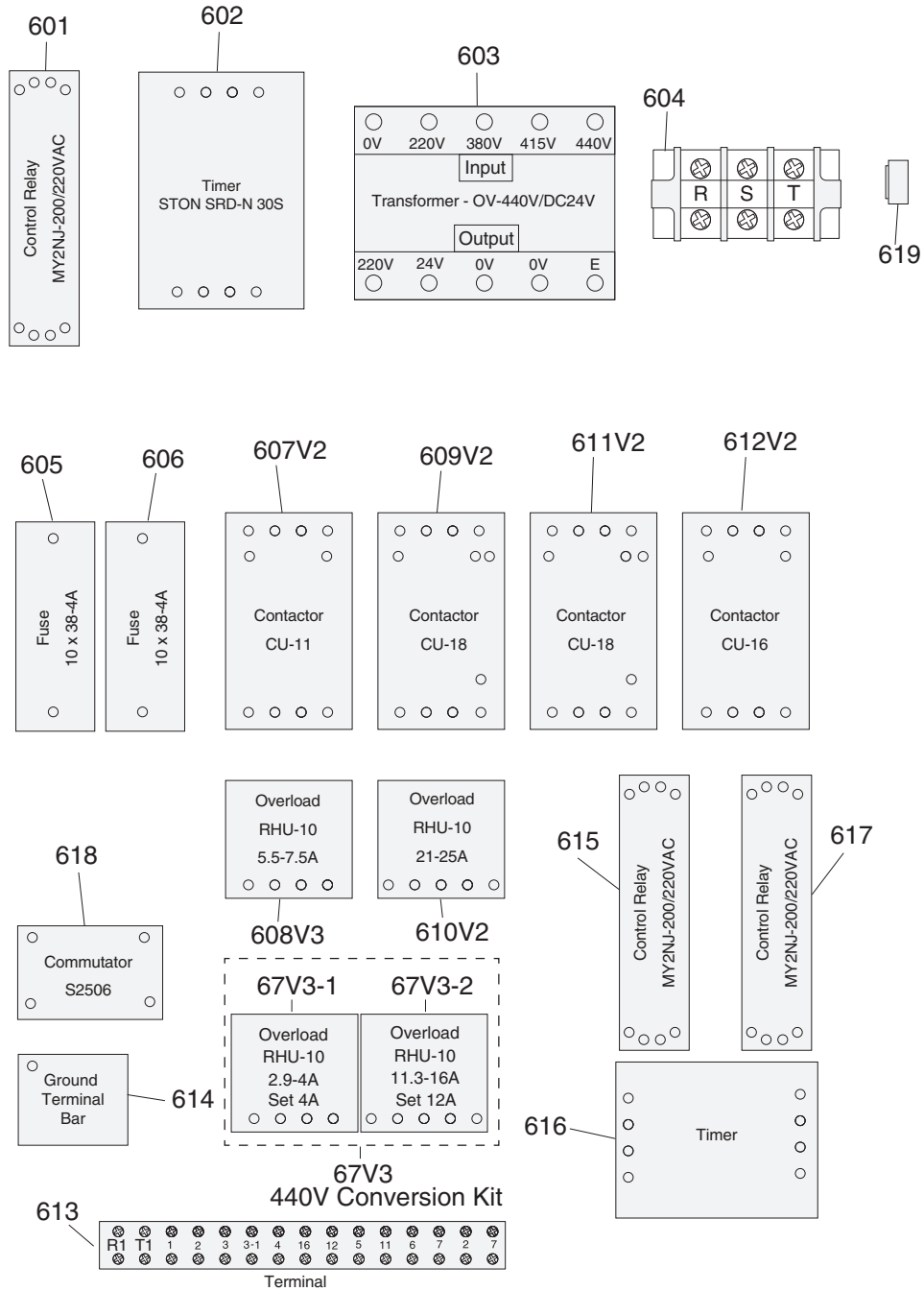


REF	PART #	DESCRIPTION
501	P0524501	SPRING BRACKET (RH)
502	P0524502	ROLLER SHAFT
503	P0524503	BEARING SEAT (RH)
504	P0524504	BALL BEARING 6003ZZ
505	P0524505	FLAT WASHER 6MM
506	P0524506	PHLP HD SCR M6-1 X 12
507	P0524507	ROLLER (RH)
508	P0524508	ROLLER (LH)

REF	PART #	DESCRIPTION
509	P0524509	CAP SCREW M6-1 X 16
510	P0524510	SPRING BRACKET (LH)
511	P0524511	SET SCREW M6-1 X 30
512	P0524512	HEX NUT M6-1
513	P0524513	STUD-FT M8-1.25 X 100
514	P0524514	HEX NUT M8-1.25
515	P0524515	LOCK WASHER 6MM
516	P0524516	BEARING SEAT (LH)



Electrical Panel

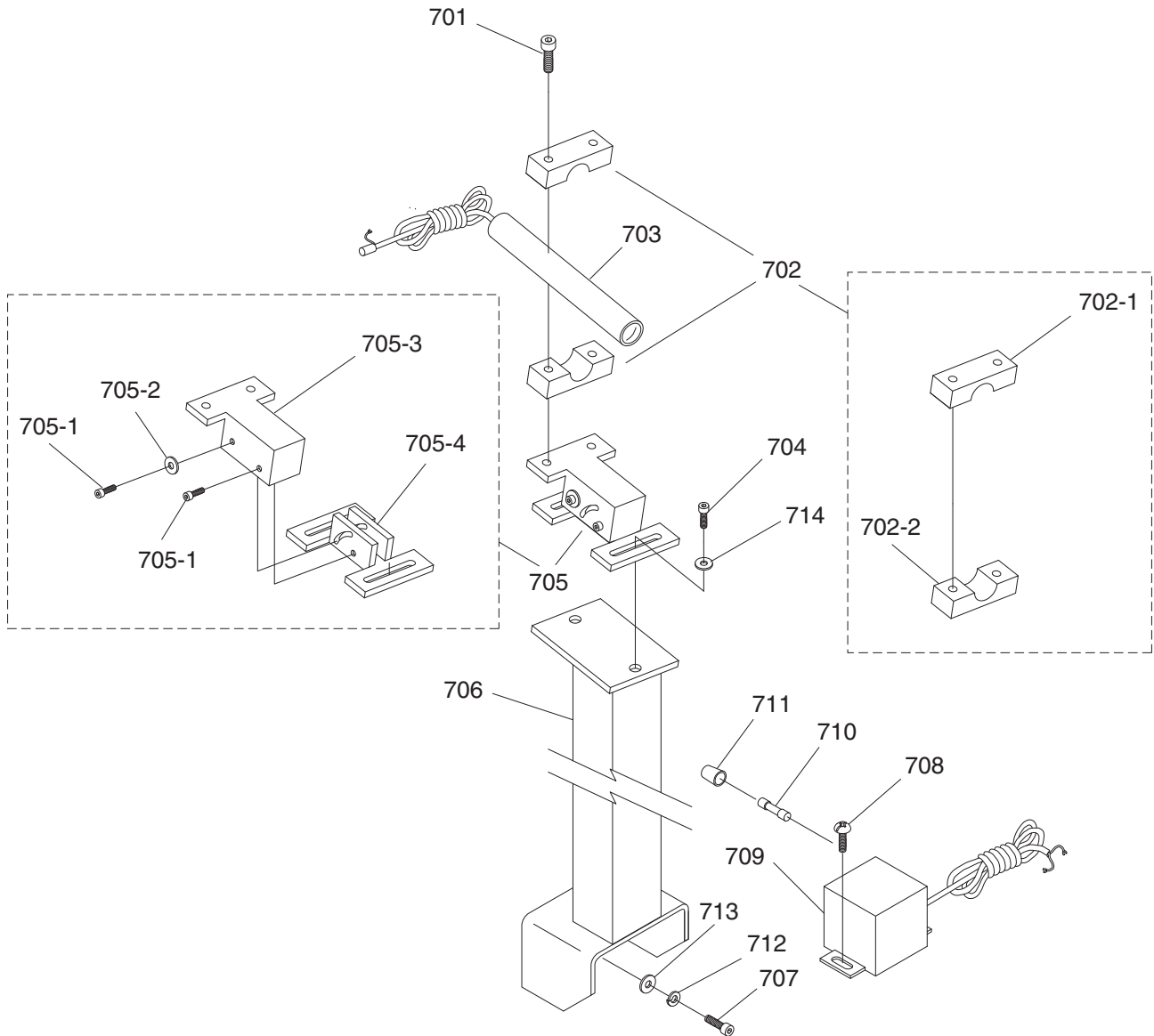


REF	PART #	DESCRIPTION
67V3	P0524067V3	440V CONVERSION KIT TECO V3.07.13
67V3-1	P0524067V3-1	OL RELAY RLU-10 2.9-4A V3.07.13
67V3-2	P0524067V3-2	OL RELAY RLU-10 11.3-16A V3.07.13
601	P0524601	RELAY OMROM MY2NJ-200/220VAC
602	P0524602	TIMER STON SRD-N 30S
603	P0524603	TRANSFORMER OV-440V/DC24V
604	P0524604	TERMINAL BAR 3-P
605	P0524605	FUSE 10 X 38 4A
606	P0524606	FUSE 10 X 38 4A
607V2	P0524607V2	CONTACTOR TECO CU-11 220V V2.09.10
608V3	P0524608V3	OL RELAY RLU-10 5.5-7.5A V3.07.13

REF	PART #	DESCRIPTION
609V2	P0524609V2	CONTACTOR TECO CU-18 220V V2.09.10
610V2	P0524610V2	OL RELAY RLU-10 21-25A V2.07.13
611V2	P0524611V2	CONTACTOR TECO CU-18 220V V2.09.10
612V2	P0524612V2	CONTACTOR TECO CU-16 220V V2.07.13
613	P0524613	TERMINAL BAR 15-P
614	P0524614	GROUND TERMINAL BAR 4-P
615	P0524615	RELAY OMROM MY2NJ-200/220VAC
616	P0524616	TIMER
617	P0524617	RELAY OMROM MY2NJ-200/220VAC
618	P0524618	COMMUTATOR S2506
619	P0524619	STRAIN RELIEF



Laser Guide

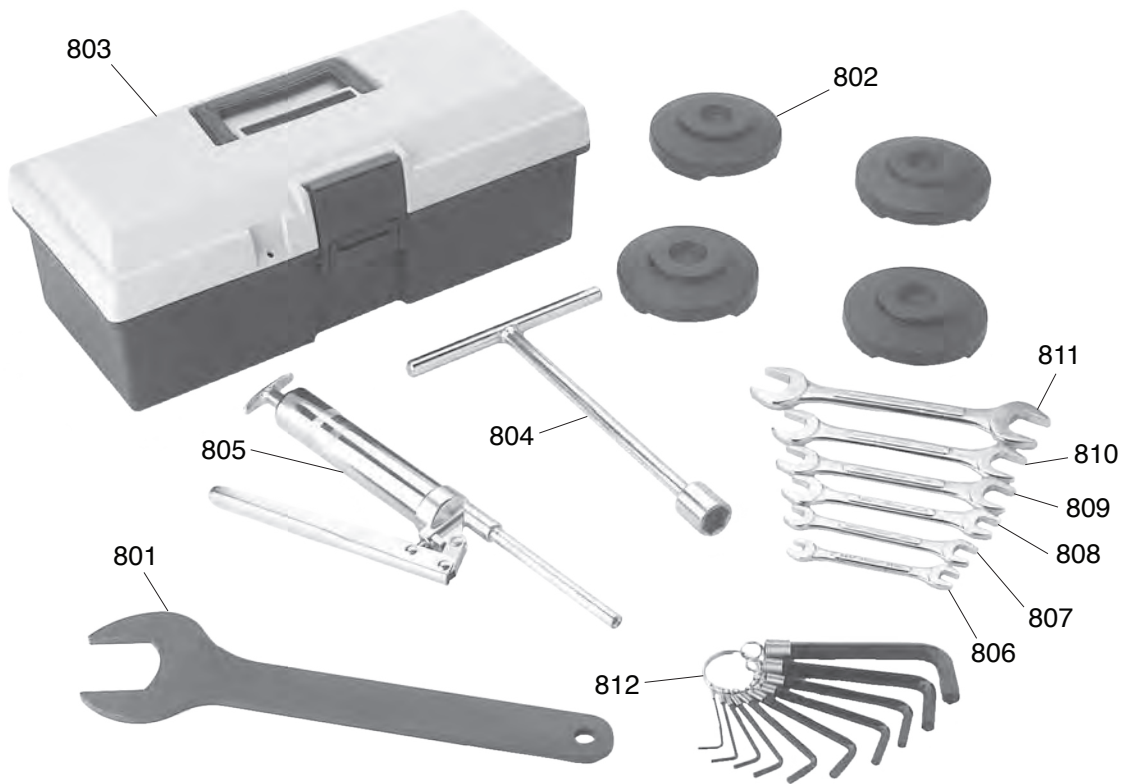


REF	PART #	DESCRIPTION
701	P0524701	CAP SCREW M6-1 x 35
702	P0524702	LASER CLAMP ASSY
702-1	P0524702-1	LASER CLAMP (TOP)
702-2	P0524702-2	LASER CLAMP (BOTTOM)
703	P0524703	LASER
704	P0524704	CAP SCREW M6-1 X 16
705	P0524705	LASER BRACKET ASSY
705-1	P0524705-1	CAP SCREW M4-.7 X 8
705-2	P0524705-2	FLAT WASHER 4MM
705-3	P0524705-3	LASER BRACKET (TOP)

REF	PART #	DESCRIPTION
705-4	P0524705-4	LASER BRACKET (BOTTOM)
706	P0524706	LASER SUPPORT ARM
707	P0524707	CAP SCREW M8-1.25 X 25
708	P0524708	PHLP HD SCR M5-.8 X 8
709	P0524709	LASER POWER BOX
710	P0524710	FUSE T1AL250V
711	P0524711	FUSE COVER
712	P0524712	LOCK WASHER 8MM
713	P0524713	FLAT WASHER 8MM
714	P0524714	FLAT WASHER 8MM



Accessories



REF	PART #	DESCRIPTION
801	P0524801	ARBOR WRENCH 45MM
802	P0524802	CAST IRON FOOT
803	P0524803	TOOLBOX
804	P0524804	T-HANDLE WRENCH 19MM
805	P0524805	GREASE GUN
806	P0524806	WRENCH 8 X 10MM OPEN-ENDS

REF	PART #	DESCRIPTION
807	P0524807	WRENCH 10 X 12MM OPEN-ENDS
808	P0524808	WRENCH 11 X 13MM OPEN-ENDS
809	P0524809	WRENCH 14 X 17MM OPEN-ENDS
810	P0524810	WRENCH 17 X 19MM OPEN-ENDS
811	P0524811	WRENCH 22 X 24MM OPEN-ENDS
812	P0524812	HEX WRENCH 1.5-10MM 10PC SET



Troubleshooting

SYMPTOM	POSSIBLE CAUSE	CORRECTIVE ACTION
Motor will not start.	<ol style="list-style-type: none"> 1. Low voltage. 2. Open circuit in motor or loose connections. 	<ol style="list-style-type: none"> 1. Check power line for proper voltage. 2. Inspect all lead connections on motor for loose or open connections.
Motor will not start; fuses or circuit breakers blow.	<ol style="list-style-type: none"> 1. Short circuit in line cord or plug. 2. Short circuit in motor or loose connections. 3. Incorrect fuses or circuit breakers in power line. 	<ol style="list-style-type: none"> 1. Inspect cord or plug for damaged insulation and shorted wires. 2. Inspect all connections on motor for loose or shorted terminals or worn insulation. 3. Install correct fuses or circuit breakers.
Motor overheats.	<ol style="list-style-type: none"> 1. Motor overloaded. 2. Air circulation through the motor restricted. 	<ol style="list-style-type: none"> 1. Reduce load on motor. 2. Clean out motor to provide normal air circulation.
Motor stalls (resulting in blown fuses or tripped circuit).	<ol style="list-style-type: none"> 1. Short circuit in motor or loose connections. 2. Low voltage. 3. Incorrect fuses or circuit breakers in power line. 4. Motor overloaded. 	<ol style="list-style-type: none"> 1. Inspect connections on motor for loose or shorted terminals or worn insulation. 2. Correct the low voltage conditions. 3. Install correct fuses or circuit breakers. 4. Reduce load on motor.
Machine slows when operating.	<ol style="list-style-type: none"> 1. Belts loose. 	<ol style="list-style-type: none"> 1. Tighten belts.
Loud, repetitious noise coming from machine.	<ol style="list-style-type: none"> 1. Pulley setscrews or keys are missing or loose. 2. Motor fan is hitting the cover. 3. V-belts are defective. 	<ol style="list-style-type: none"> 1. Inspect keys and setscrews. Replace or tighten if necessary. 2. Tighten fan or shim cover. 3. Replace V-belts.
Hand wheels will not turn.	<ol style="list-style-type: none"> 1. Hand wheel key is inserted too far. 2. Bullets are wedged. 3. Roll pin or setscrew in worm gear is contacting geared trunnion. 	<ol style="list-style-type: none"> 1. Remove hand wheel and adjust key. 2. Remove hand wheel and adjust bullets. 3. Inspect roll pins and setscrews in the worm gear. Tighten if necessary.



G0524 Control Panel Wiring

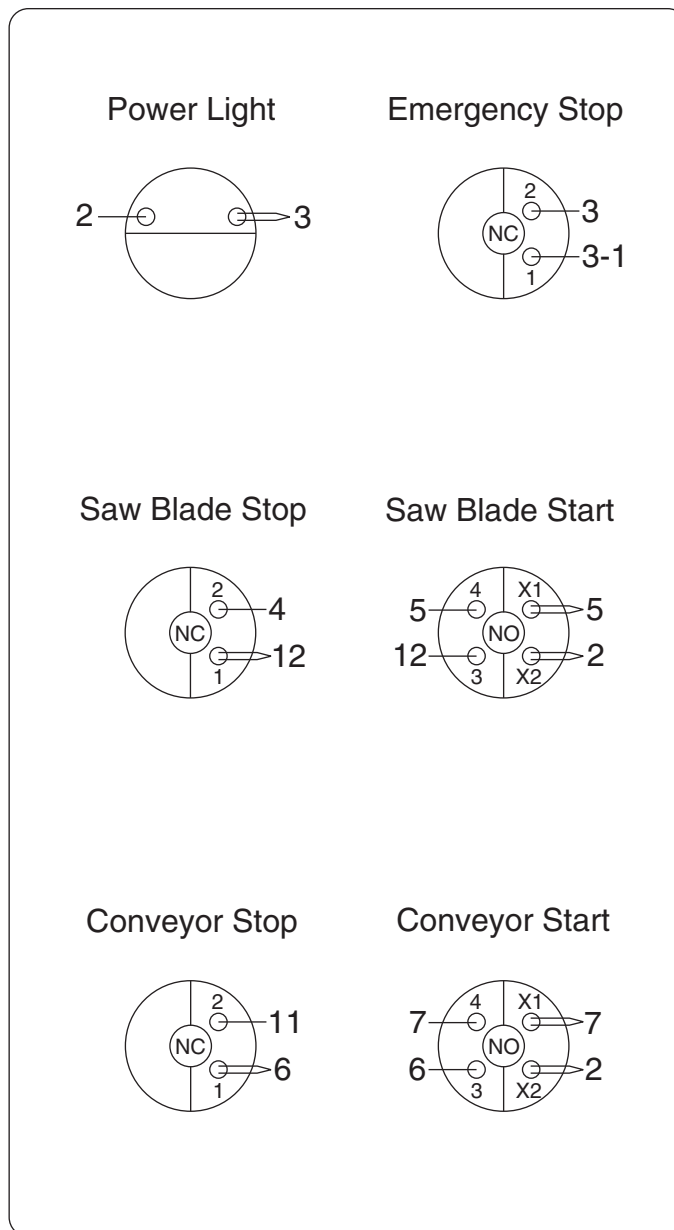
⚠ DANGER

Disconnect power from machine before performing any electrical service. Failure to do this will result in a shock hazard, leading to injury or death.

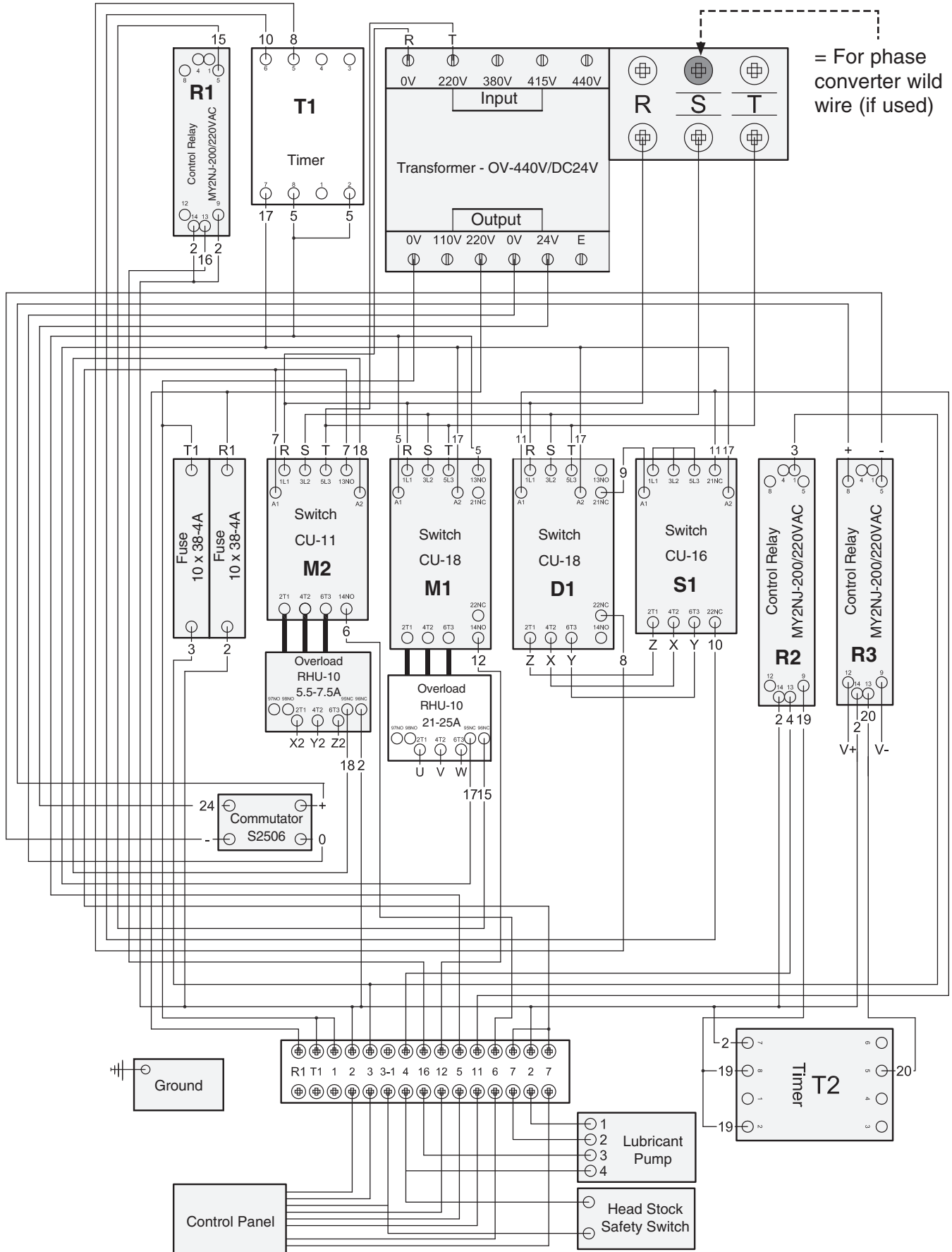
NOTICE

The wires from the power supply, except the green ground wire, are interchangeable, therefore colors are not specified.

Control Panel (Back-Side)



G0524 Electrical Box Wiring



G0524 Main & Feed Motor Wiring

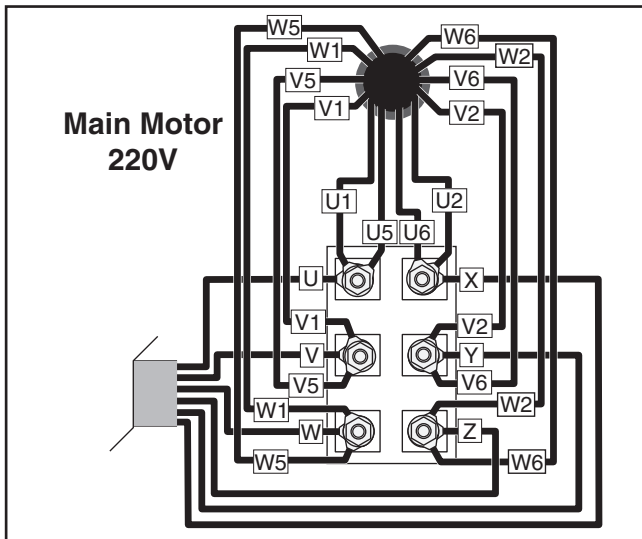


Figure 46. 220V main motor wiring.

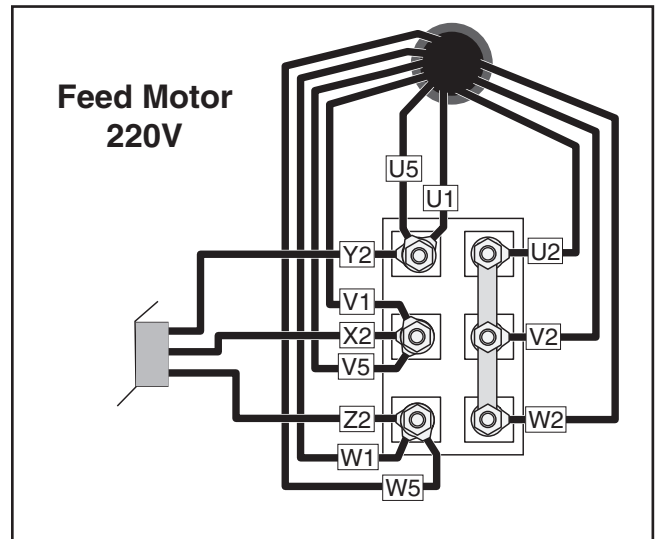


Figure 49. 220V feed motor wiring.

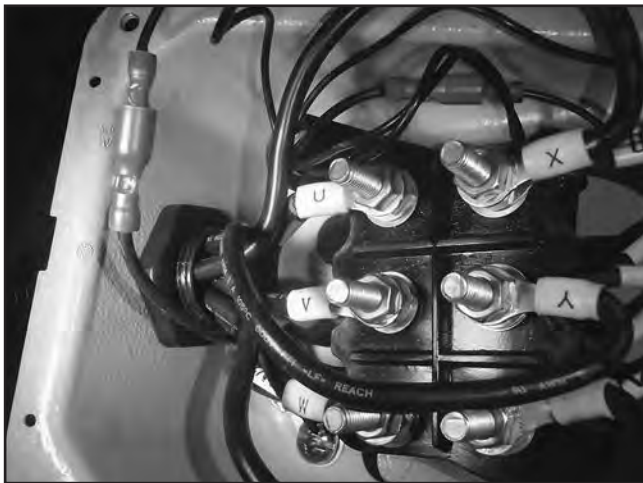


Figure 47. 220V main motor wiring.



Figure 50. 220V feed motor wiring.

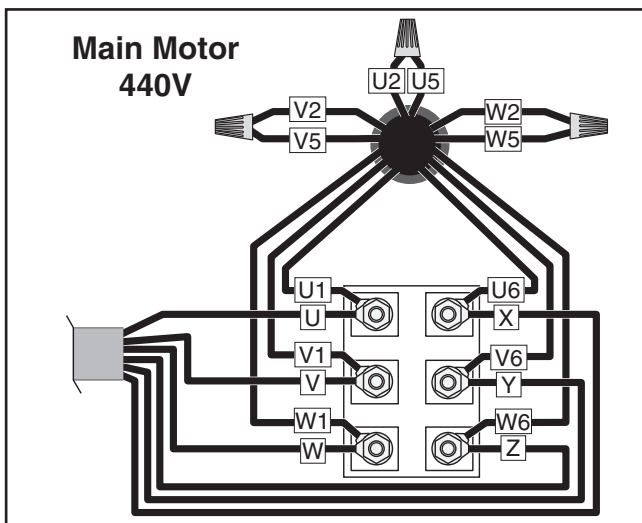


Figure 48. Main motor wired for 440V.

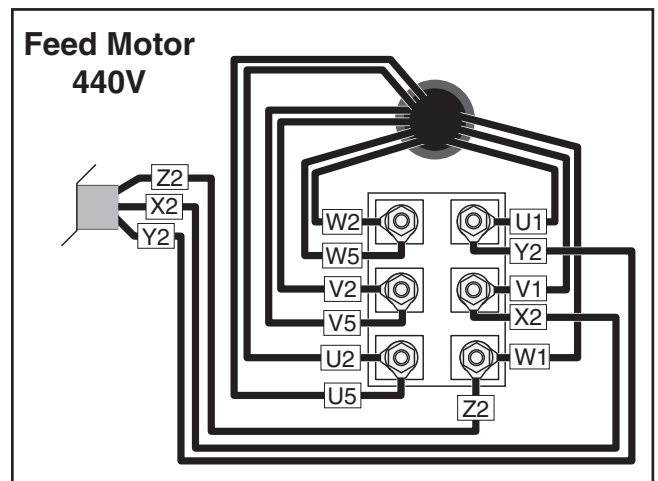


Figure 51. Feed motor wired for 440V.

